

Intel Rapid Start Setup Guide

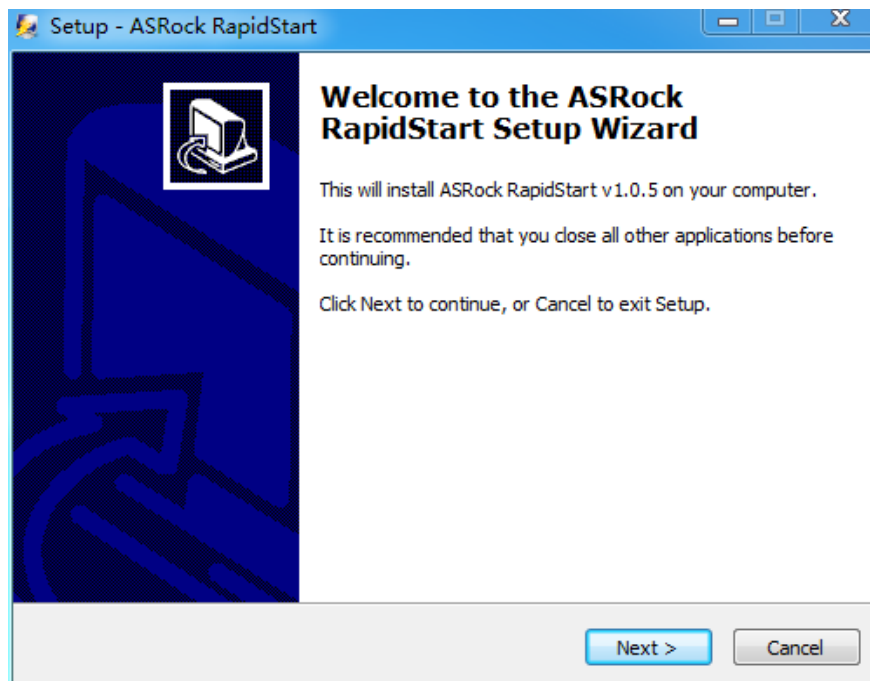
System requirements

1. Confirm whether your motherboard supports this feature. For the H61 series motherboards, please refer to the webpage below (Update the motherboard's BIOS to the latest version): <http://www.asrock.com/news/events/2012H61/>
2. Windows 7 32bit or 64bit operating system.
3. Set the SATA mode to AHCI. If Windows 7 is already installed under IDE mode, directly changing the SATA mode to AHCI may cause Windows 7 to crash while booting, please refer [here](#) to switch to AHCI mode.
4. Download ASRock Rapid Start utility on ASRock's official website. For example, 1.0.5 version: [http://download.asrock.com/utility/Intel/RapidStart\(v1.0.5\).zip](http://download.asrock.com/utility/Intel/RapidStart(v1.0.5).zip)
5. Download Intel Rapid Start driver on ASRock's official website. For example, 1.0.1.0.1008 version: [http://download.asrock.com/drivers/Intel/SATA/RapidStart_Win7-64_Win7\(v1.0.0.1014\).zip](http://download.asrock.com/drivers/Intel/SATA/RapidStart_Win7-64_Win7(v1.0.0.1014).zip)

Setup

Installing and configuring ASRock Rapid Start utility

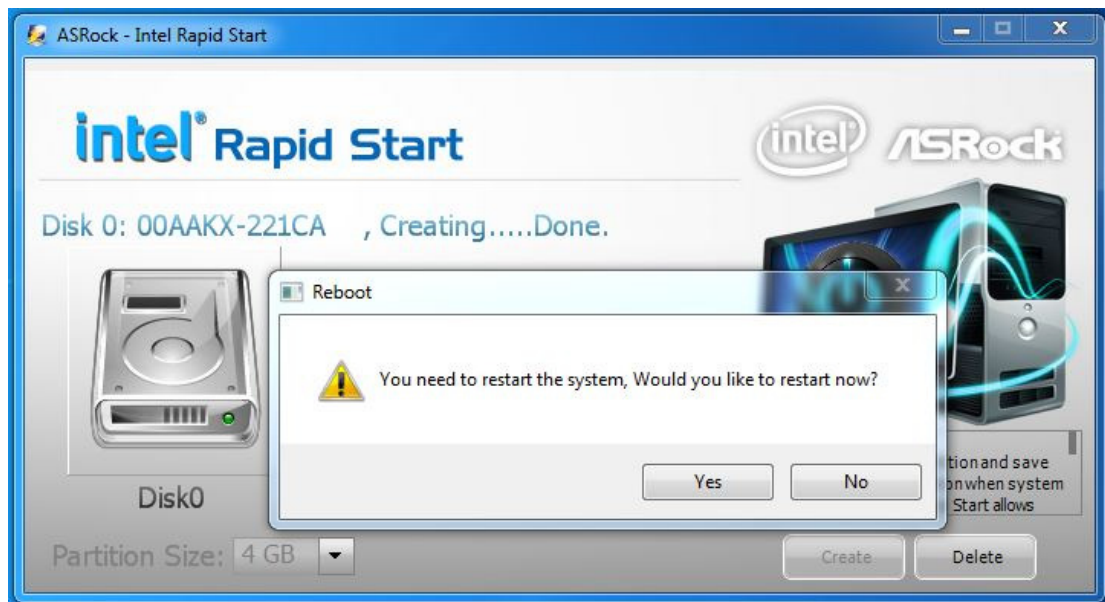
1. Install **ASRock Rapid Start utility**. Follow the instructions to complete the installation.



2. After the installation, run **ASRock Rapid Start utility** from **Start -> All Programs -> ASRock Utility**. If you have more than one hard drives in your system, you must select one, then choose the **Partition Size** desired for your hidden partition and click on **Create**. The system will automatically create a hidden partition according to your settings. If there are SSD's installed into your system, it is recommended to create the partition on the SSD.



3. When prompted to restart after the setup, click **Yes** to reboot.

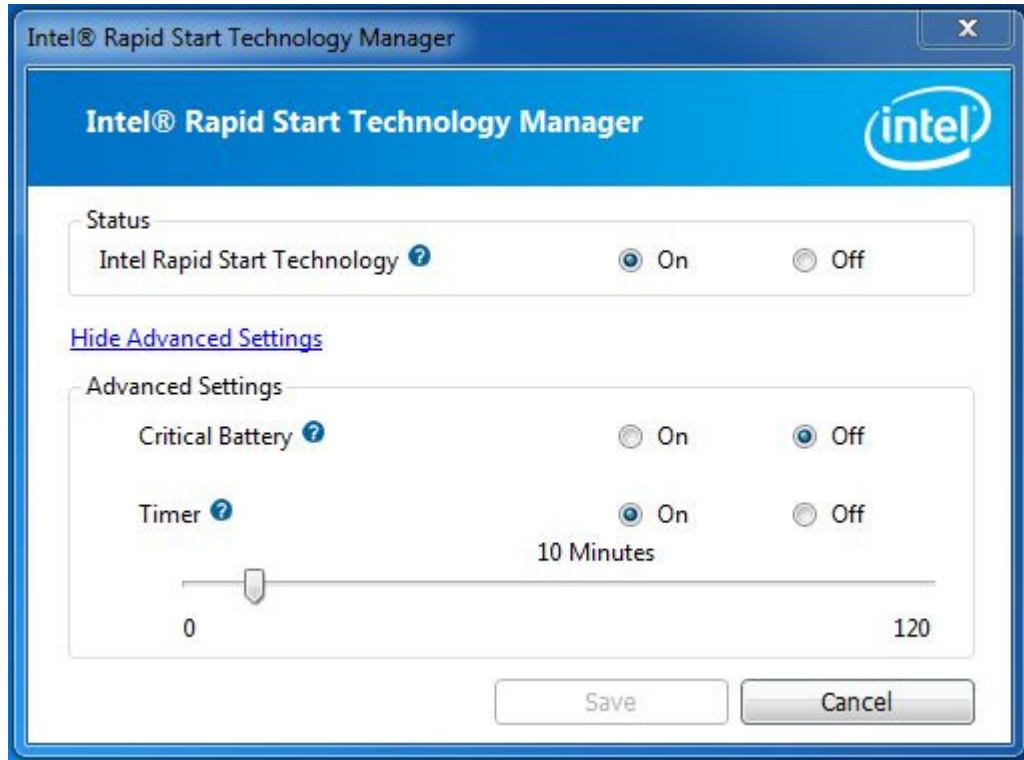


Installing and configuring Intel Rapid Start driver

1. Execute **Intel Rapid Start driver**. Follow the instructions to complete the installation.

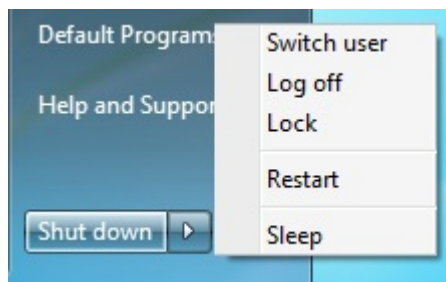


2. Run Intel Rapid Start Technology Manager from Windows **Start** -> **All Programs** -> **Intel**. Drag the icon to configure the time. For example, if the timer is set to ten minutes, the system will enable Rapid Start mode after entering sleep state for ten minutes. If the timer is set to 0 minutes, Windows will immediately enable Rapid Start mode as it enters sleep state.



Experience Rapid Start Technology

1. You may shut down the computer without terminating the applications or files you are executing currently. Click on Windows **Start** -> the arrow next to **Shut down**, and click on **Sleep**.



2. Windows system will enter sleep state.

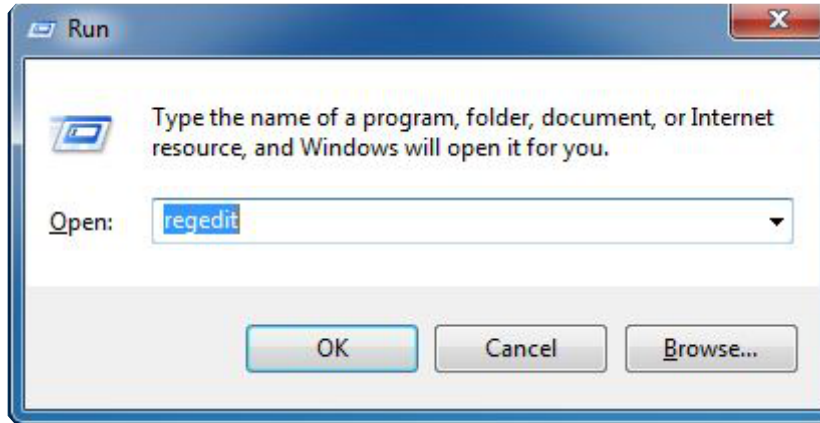
3. According to your settings in Rapid Start Technology Manager, the system will automatically wake up and enable Rapid Start mode after entering sleep state for a period of time. The power of the computers in Rapid Start mode can be cut off, it will not cause data loss of the programs or files you were executing before entering sleep state.

4. When you wish to continue to use the computer just hit the power button, the system will rapidly return to Windows, the programs and files which you were using before entering sleep state will be accessible immediately.

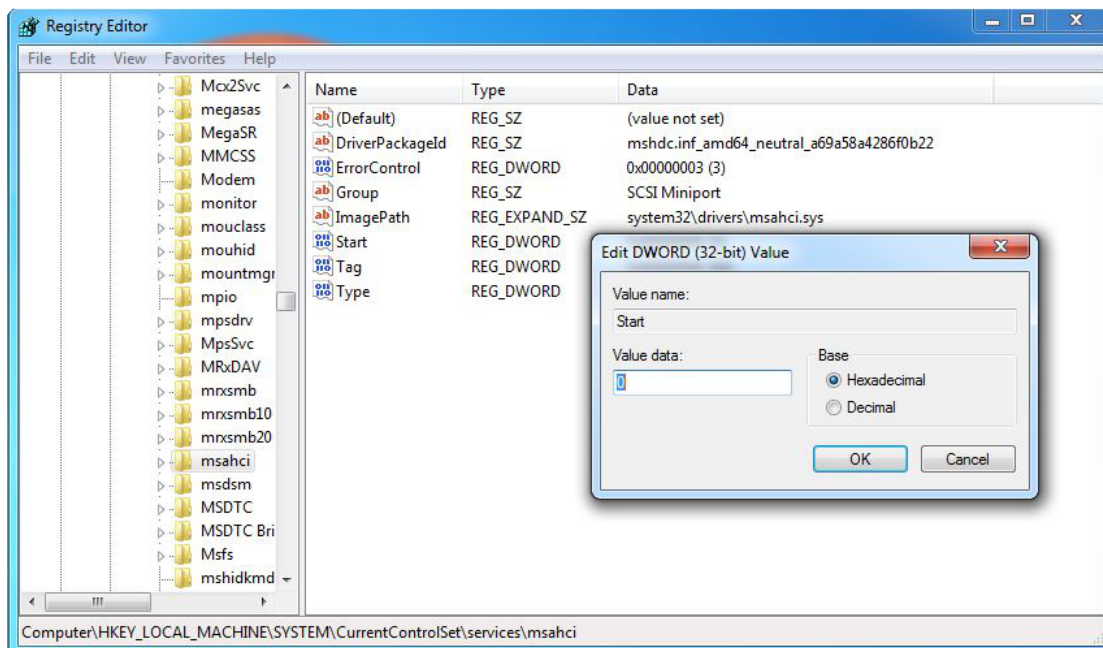
Appendix: How to turn an IDE mode Windows 7 into AHCI mode

Note: There are certain risks. Please backup any important data before operating to avoid loss.

1. Press **Win + R** simultaneously in Windows 7, type **regedit** into the word box then click **OK**.



2. Enter into **HKEY_LOCAL_MACHINE\SYSTEM\CurrentControlSet\services\msahci** in Windows Registry Editor. Double click on the value **Start** and change the value from **3** into **0**. Click on **OK**.



3. Exit the Registry Editor window and restart the computer.

4. Press F2 to enter BIOS, then go to **Advanced** -> **Storage Configuration** and change **SATA Mode** to **AHCI**. Press F10 to save changes and exit.

5. Enter Windows 7. Windows will discover the new device and install AHCI drivers automatically.