

The SOP of setting Teaming function

Before setting up Teaming function, please make sure if your Switch (or Router) could support Teaming (IEEE 802.3ad Link Aggregation) function.

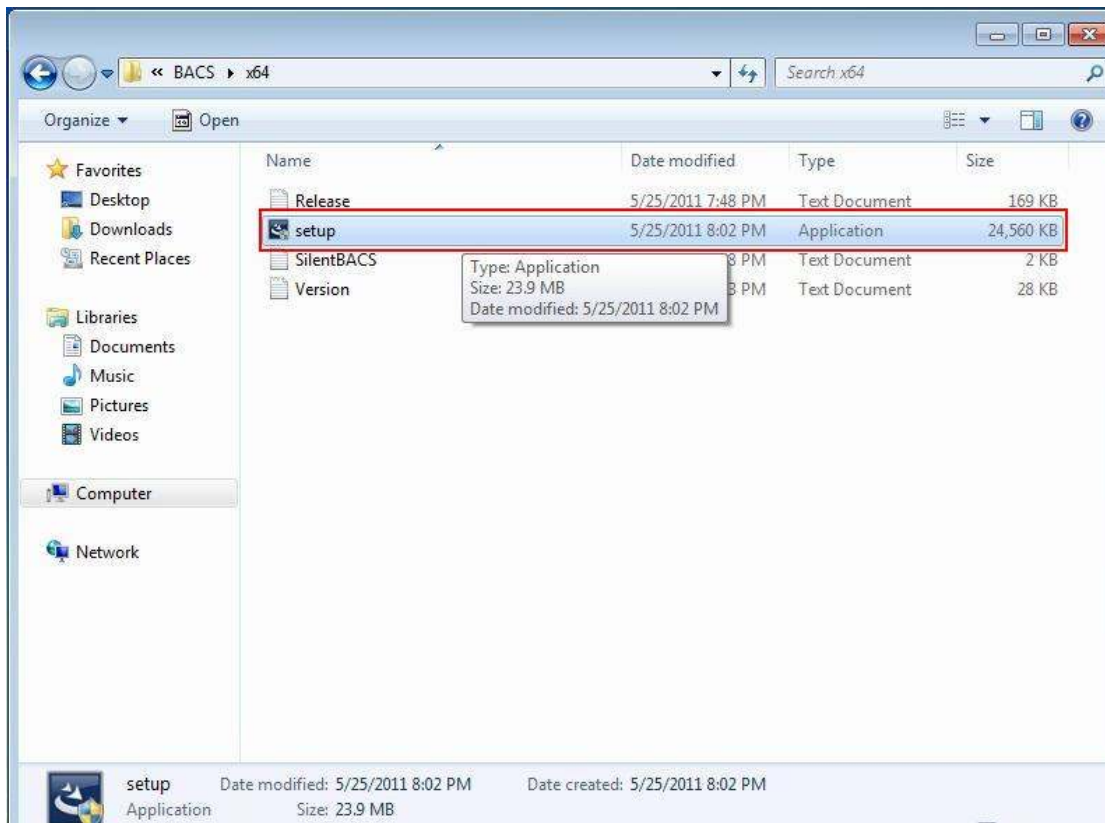
(For example: D-Link DGS-3100...)

Then, please refer to following steps to set up Teaming function.

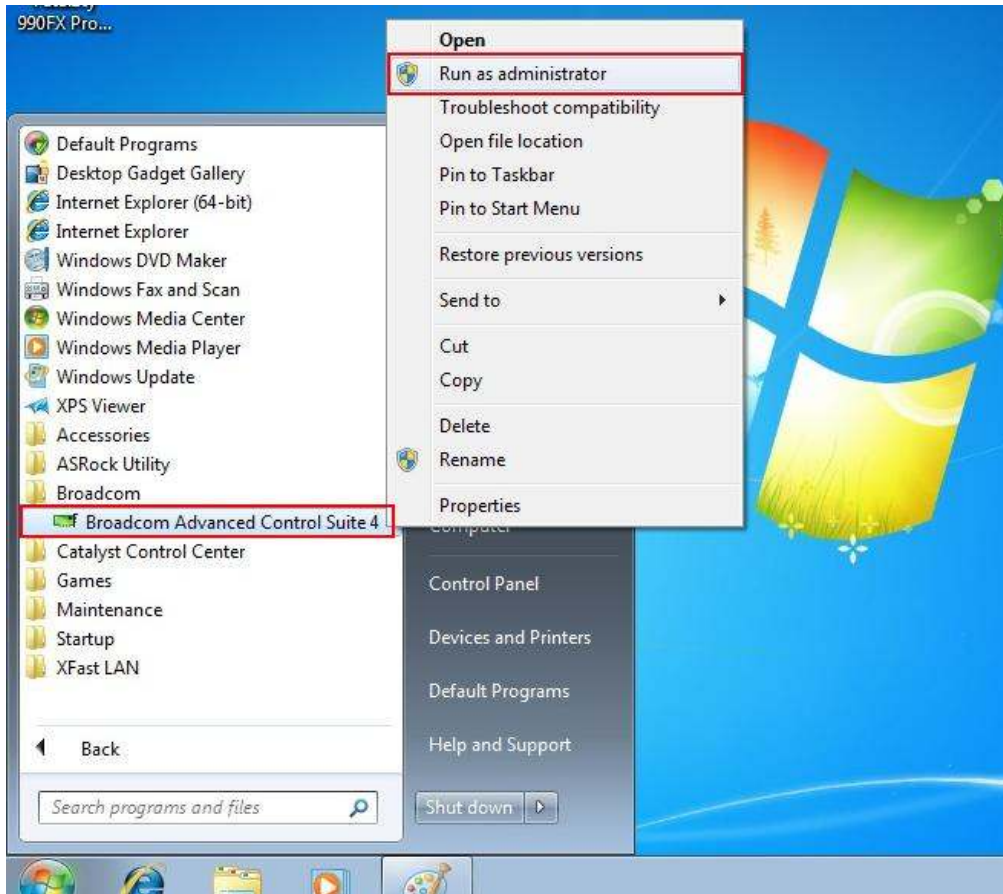
Step 1. Install Teaming driver from the following path of motherboard Support CD or our official website's download page.

The path in Support CD:

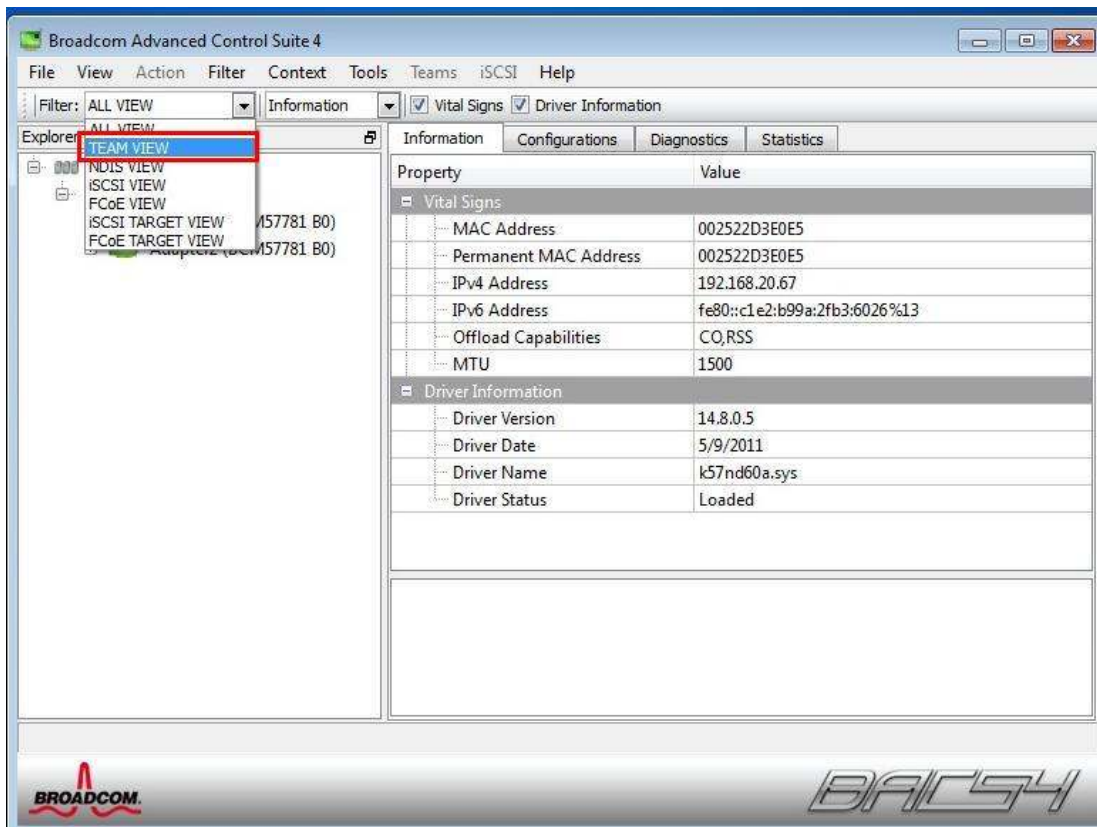
"\Drivers\LAN\Broadcom\Win7-64_Win7_Vista64_Vista_XP64_XP(v14.8.4.1)\BACS"



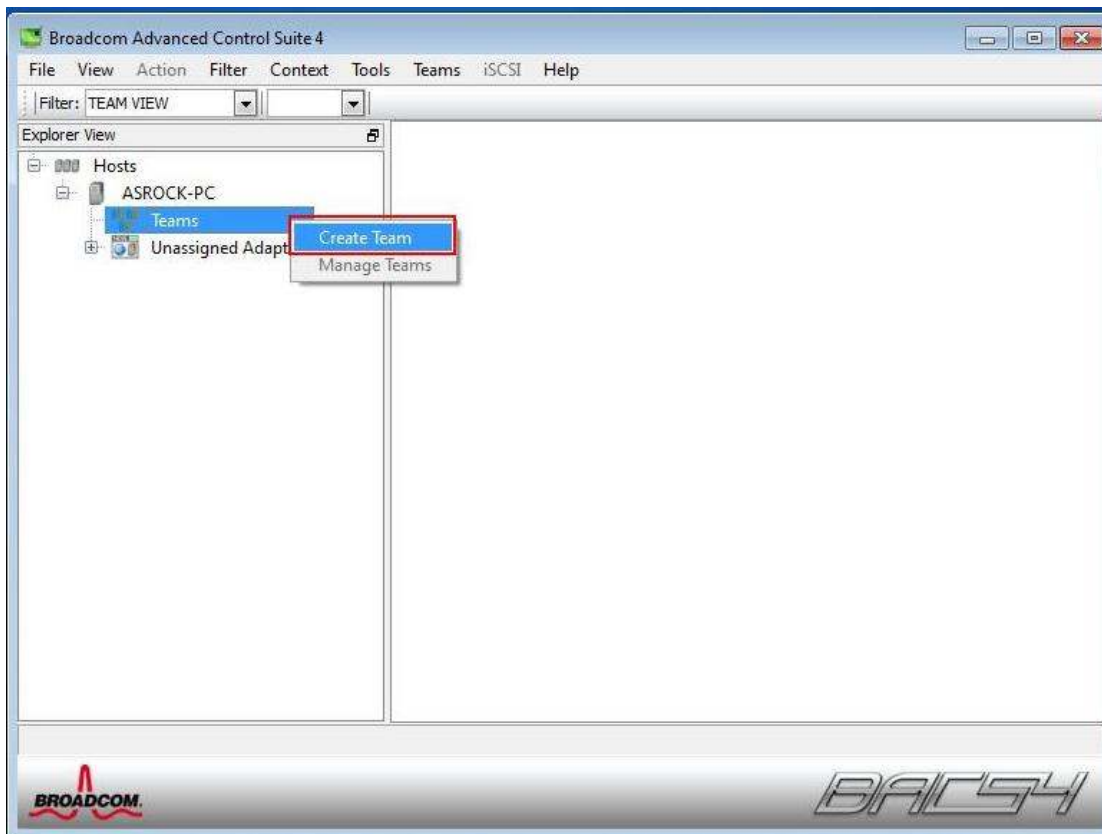
Step 2. Please refer to below picture to execute “Broadcom Advanced Controller Suite 4” by “Run as administrator”.



Step3. Set Filter as “TEAM VIEW”.

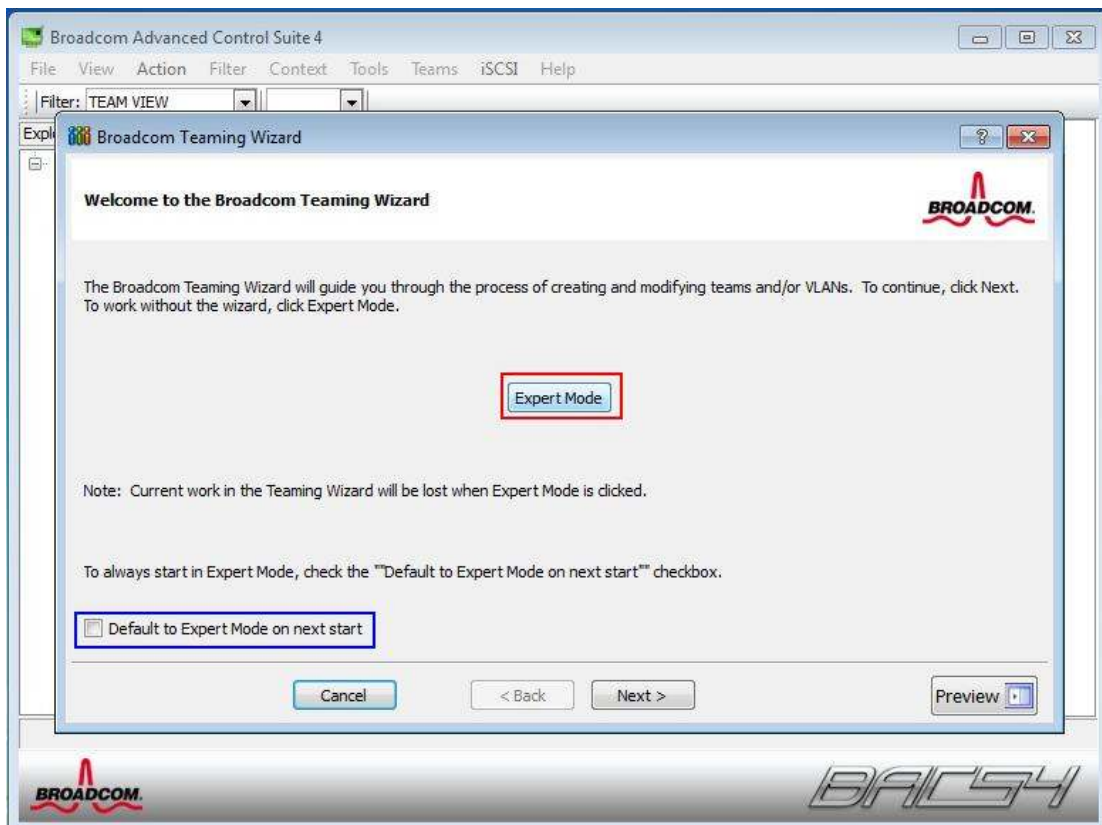


Step4. Right click to “Create Team”.

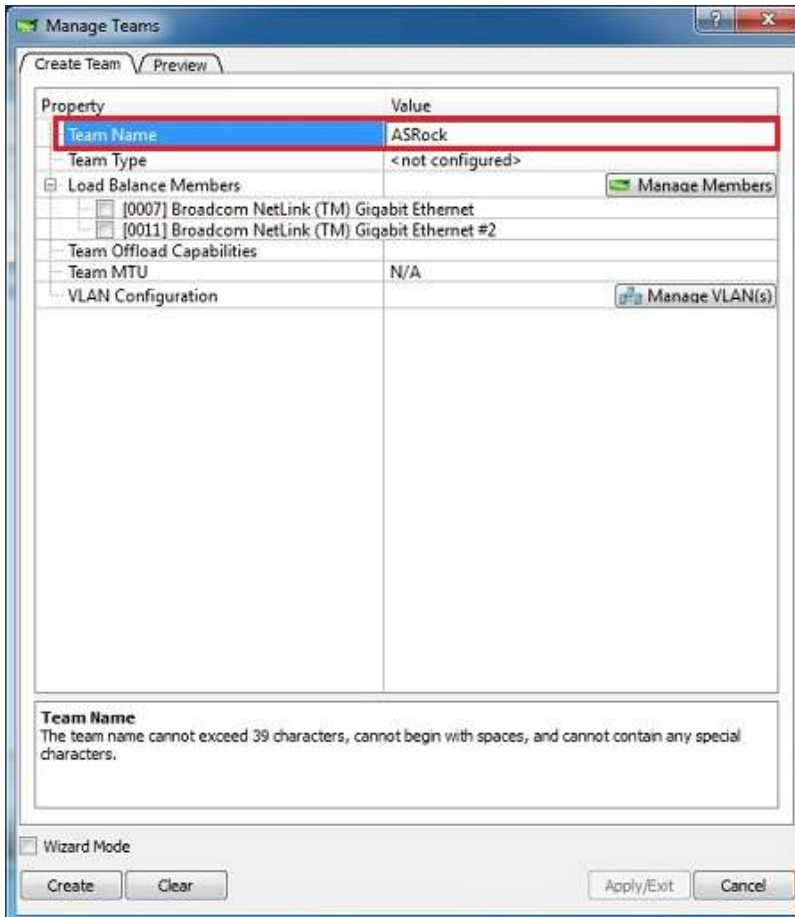


Step5. Please click “Expert Mode”.

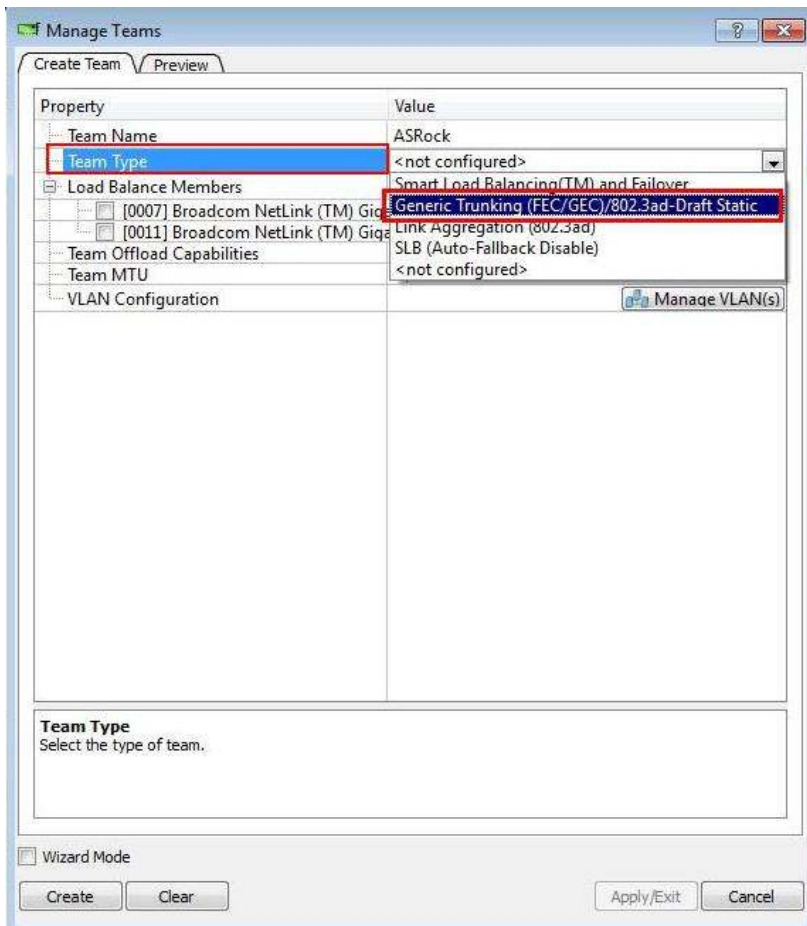
(If you want to always use Expert Mode to create a team, please click “Default to Expert Mode on next start” option.)



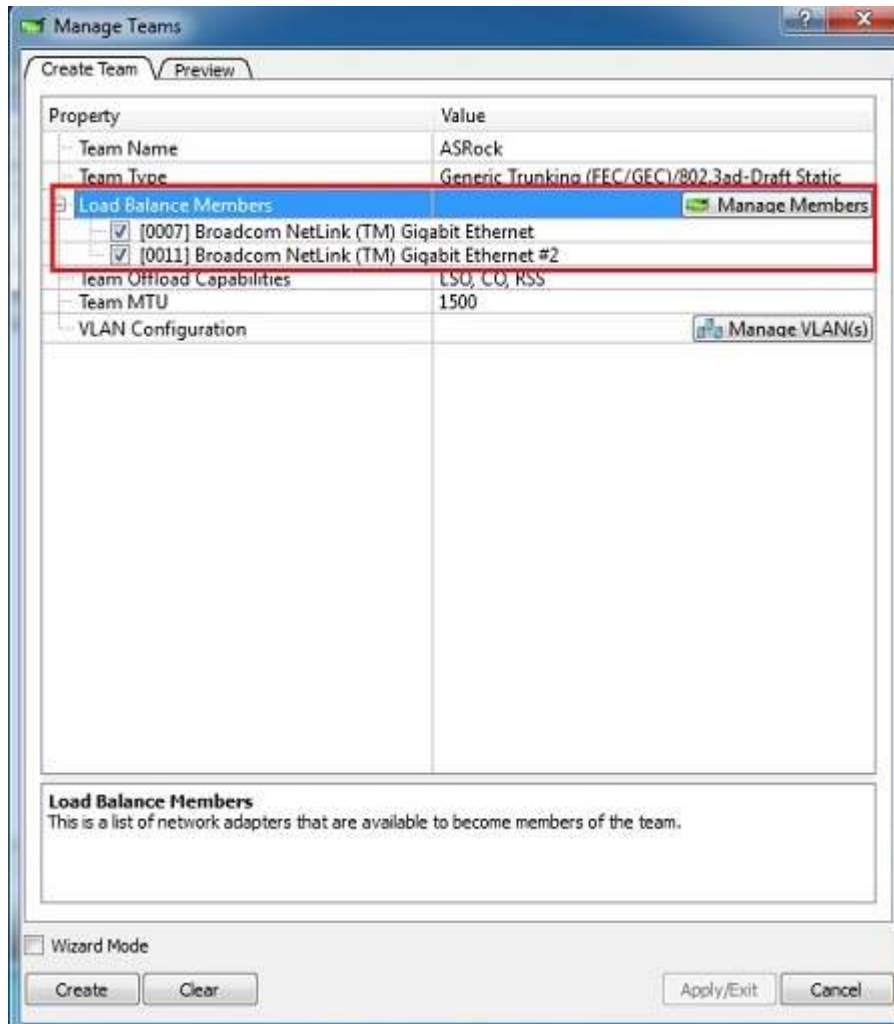
Step 6. Please click the “Team Name” field to enter a team name.



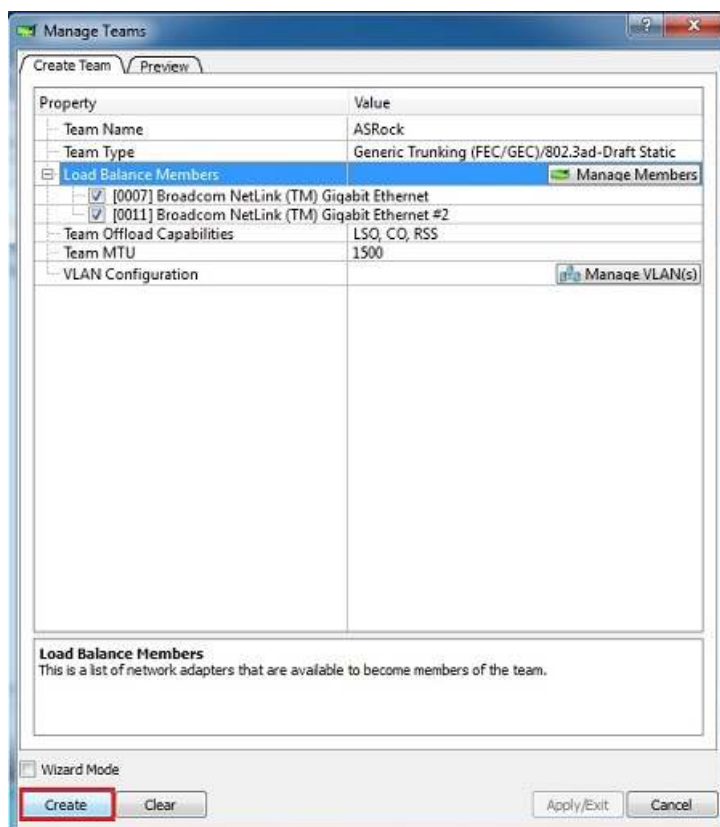
Step 7. Set Team Type to “Generic Trunking (FEC/GEC)/802.3ad-Draft Static.” (According to your need and system environment, you can choose other type.)



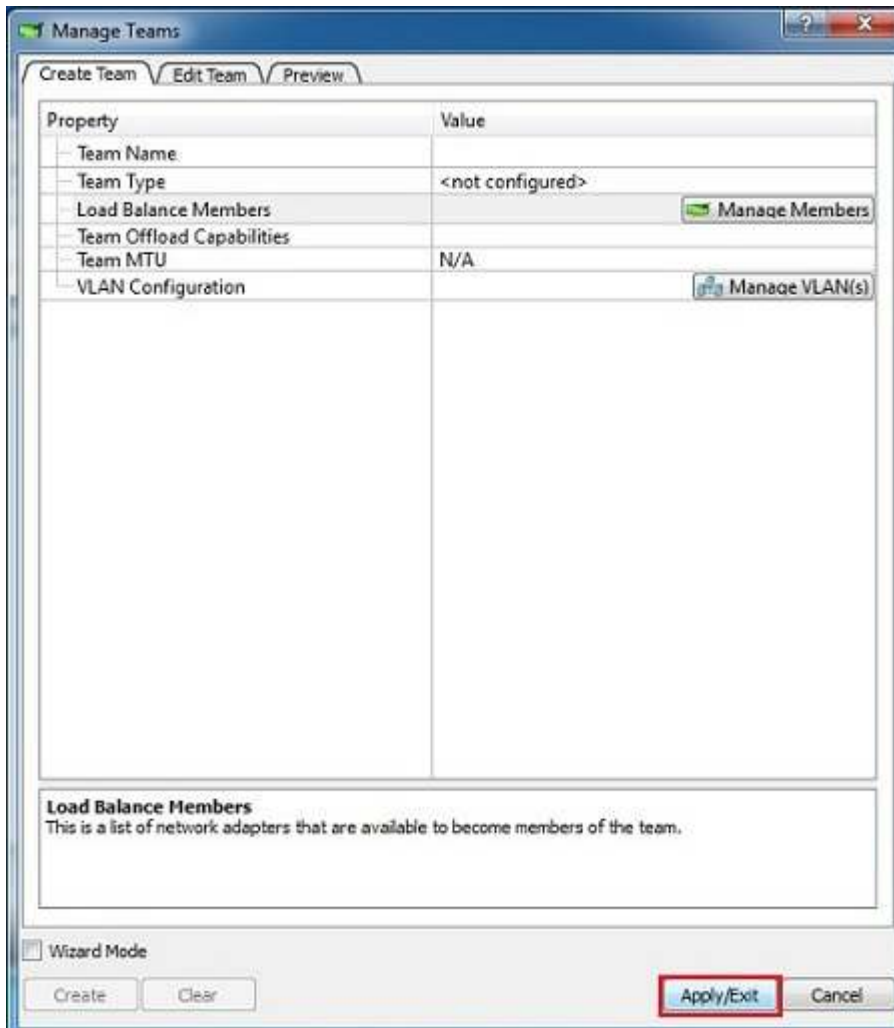
Step 8. Assign available adapters from Load Balance Members list to the team.
(Please select two available LAN adapters in Load Balance Members list.)



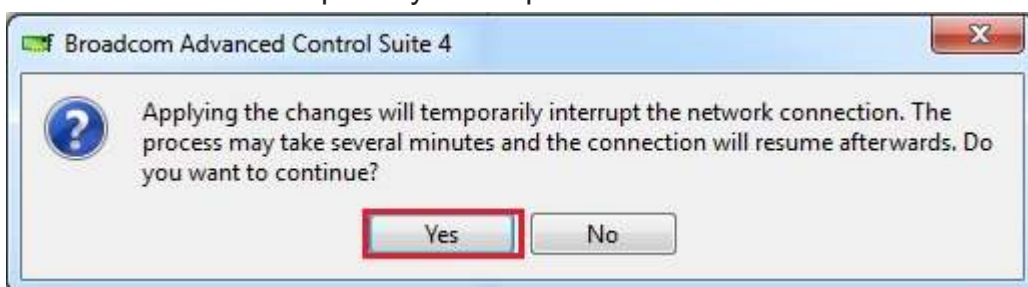
Step 9. Click "Create" to save the team information.



Step 10. If you want to define additional teams, please repeat steps 6 through 9. If you only want to create a team, please click “Apply/Exit”.

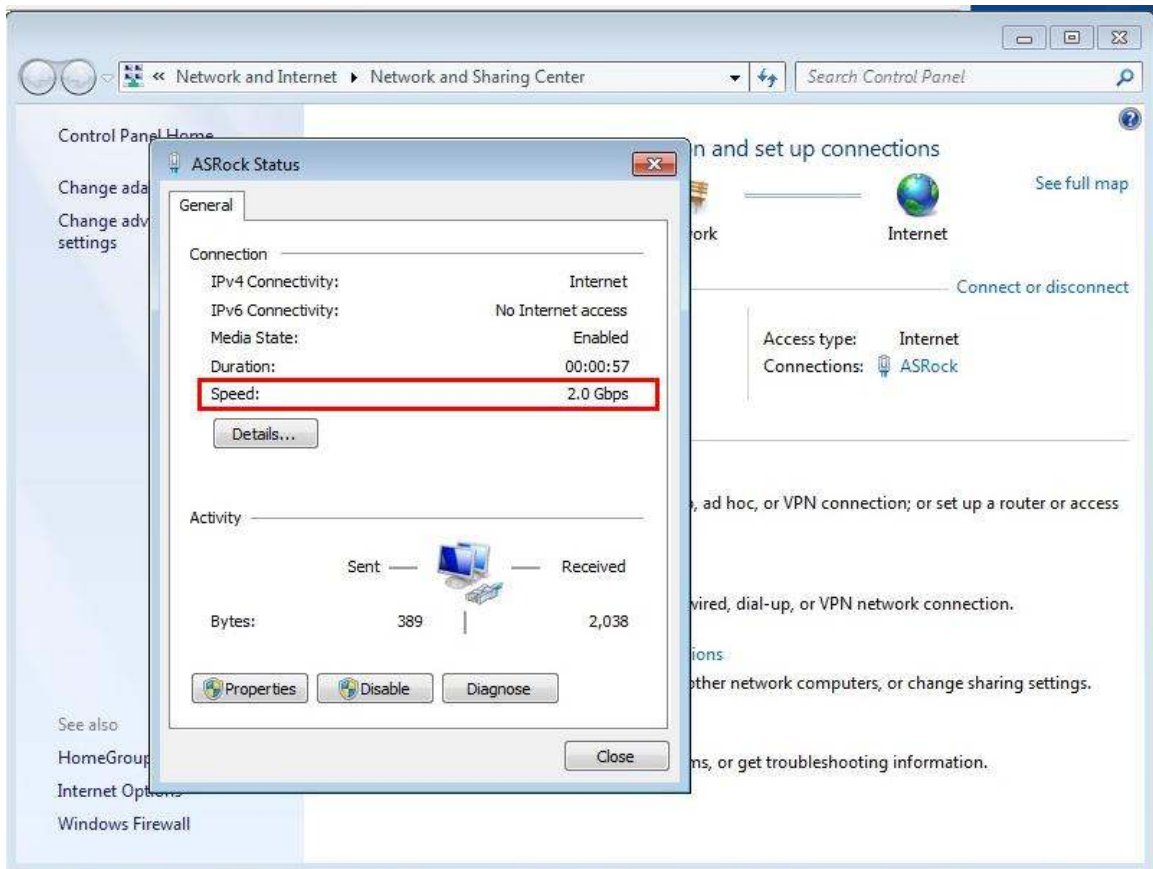


Step 11. Click “Yes” when below message is displayed indicating that the network connection will be temporarily interrupted.



Step 12. After doing above steps, system will auto create a new Local Area Connection.

Then, you can find the Speed of new Local Area Connection show 2.0Gbps as below picture.



If you would like to get the detail information about setting Teaming function, please kindly refer to below link for user manual page 50.

Link:

<http://download.asrock.com/manual/Fatal1ty%20990FX%20Professional.pdf>