

1. Q: What Mini-PCIE device does Z77 Extreme6 supports?

A: There are three different kinds of Mini-PCIE interface device.

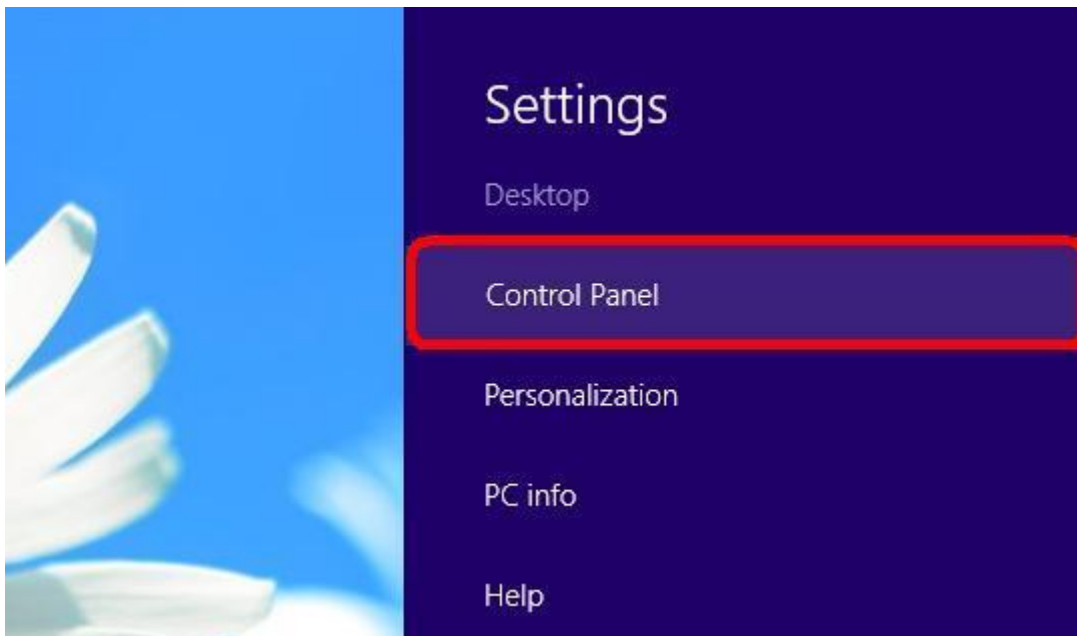
1. Mini-PCIE
2. mSATA
3. USB

Z77 Extreme6 supports Mini-PCIE interface only, like mini-PCIE wireless or wire Lan card.

2. Q: How could I change Windows 8 shut down behavior from Hibernate (S4) to shut down (S5)?

A: Please follow below setting under Windows 8

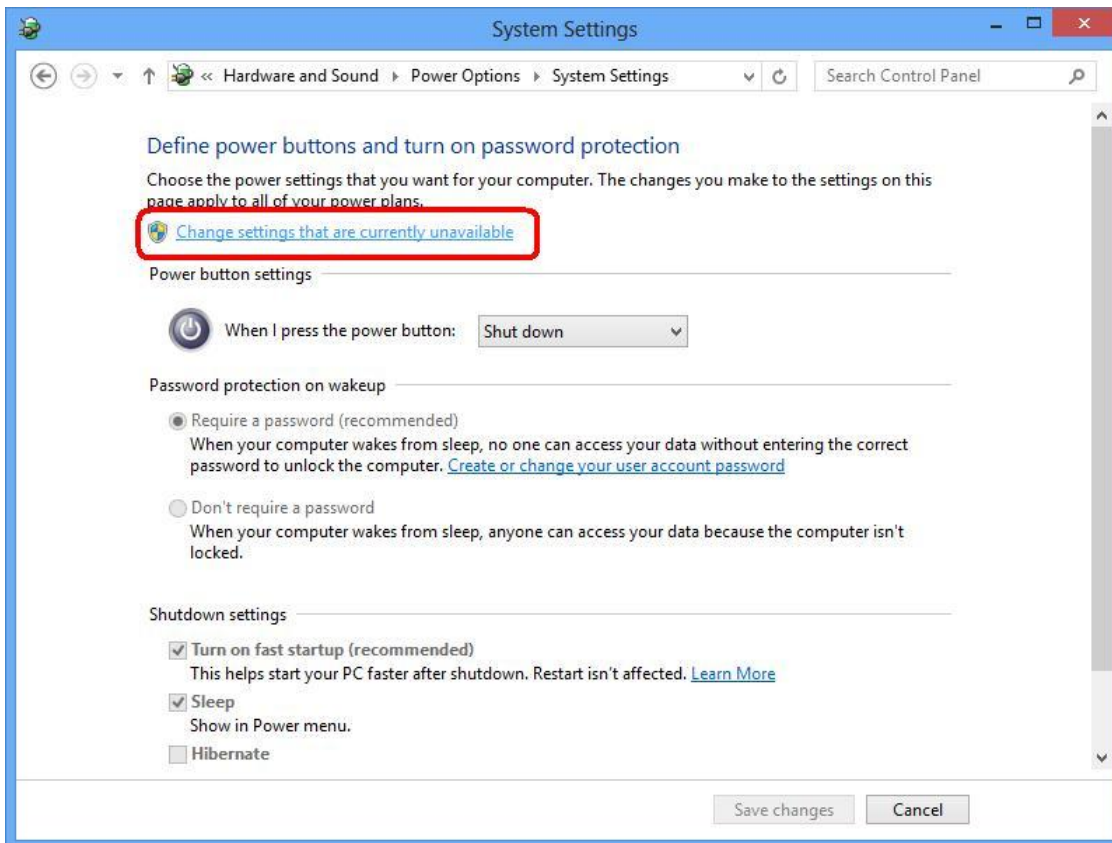
1. Enter OS [Control Panel].



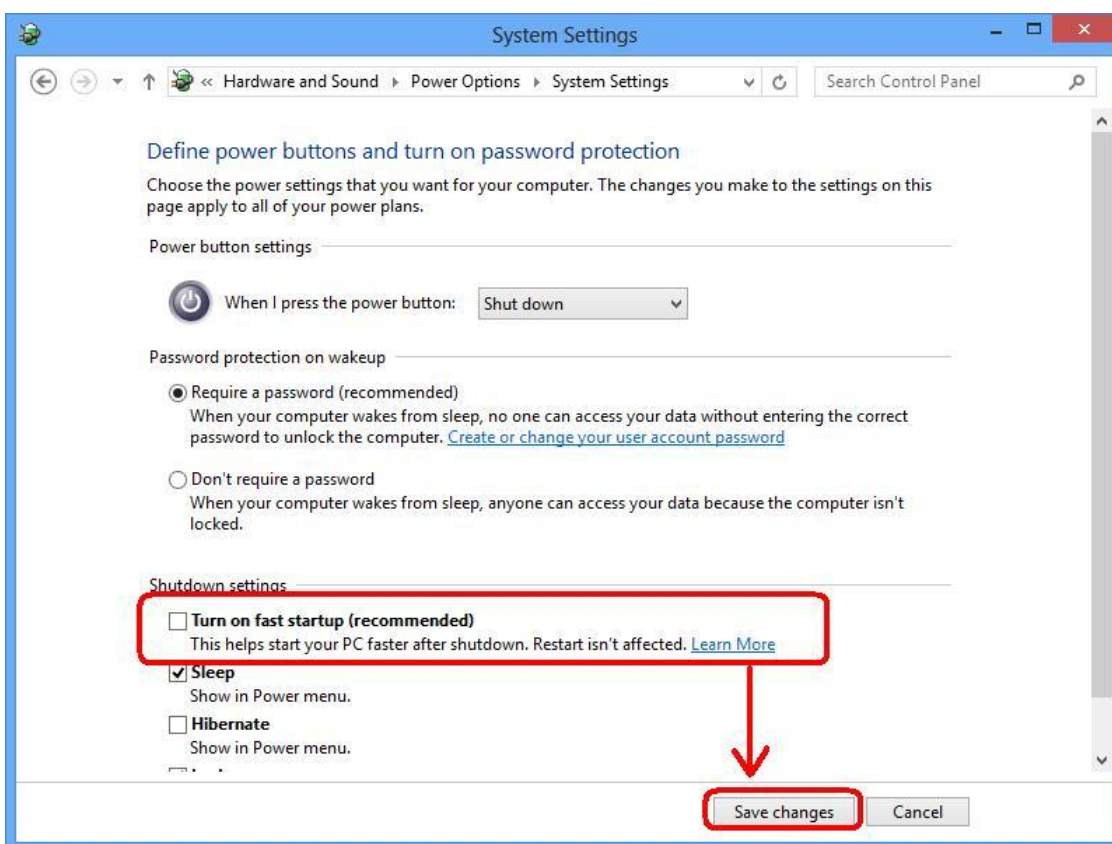
2. Search [Power options], and select [Change what the power buttons do].



3. Select [Change settings that are currently unavailable].



4. Uncheck [Turn on fast startup] item, then save change.



5. Done.

3. Q: Does my motherboard support Windows 8?

A: Please refer our website for Windows 8 support list.

Website link: <http://asrock.com/events/Windows8/>

If your model is not listed on Windows 8 support list, please kindly try inbox driver first.

Or go to chipset vender website to download the chipset driver.

- Intel website: <http://downloadcenter.intel.com/Default.aspx>
- AMD website: <http://support.amd.com/us/gpudownload/Pages/index.aspx>
- Nvidia website: <http://www.nvidia.com/Download/index.aspx?lang=en-us>
- Realtek website: <http://www.realtek.com.tw/downloads/>
- Via website: <http://www.via.com.tw/en/support/drivers.jsp>
- Broadcom website: <http://www.broadcom.com/support/>
- Etron website: [http://download.asrock.com/drivers/All/USB/USB3_Etron_Win8-64_Win8\(v0.115\).zip](http://download.asrock.com/drivers/All/USB/USB3_Etron_Win8-64_Win8(v0.115).zip)
- NEC website: <http://www.nec.com/en/global/support/index.html>

If you got any further issues, please contact ASRock TSD : Asrock_TSD@asrock.com.tw

4. Q: How can I run 128bit bus width via onboard VGA on Z77, Z68, B75, H67 series M/B?

A: 128bit bus width is supported under dual channel memory technology.

If you want to get 128bit bus width with onboard VGA, please have dual channel memory modules in your system.