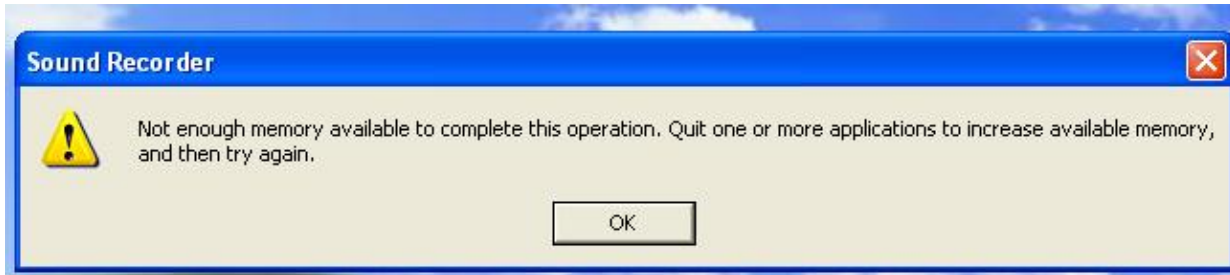


Technical Reference - Q&A

1. Q: I install more than 2GB system memory on my system. When I run the “Sound Recorder” under Windows XP, it always shows the following error message. What’s wrong?



A: This is the limitation of Windows XP. Please refer to the Microsoft Knowledge Base for details: <http://support.microsoft.com/kb/284893>

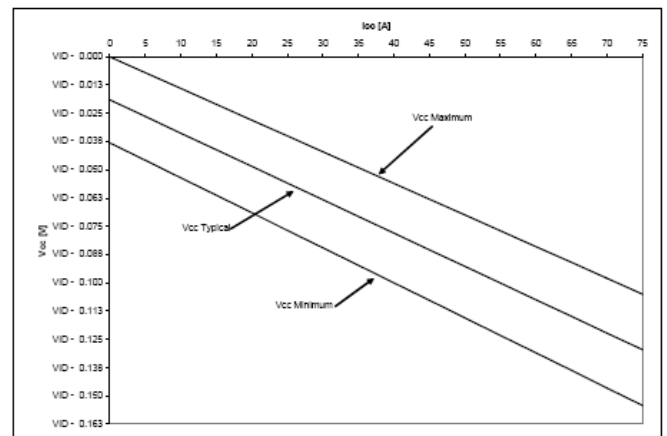
2. Q: I use Intel CPUs, why the Vcore sometimes is lower than the value in the BIOS?

A: VCore on Pentium 4 (and newer generation CPUs) is no longer static. Please refer to the Intel document below. It shows that the Vcore will decrease with the CPU loading increasing. That’s why the Vcore may be lower.

Intel® Core™2 Duo Processor E8000 Series V_{CC} Static and Transient Tolerance

| I _{CC} (A) | Voltage Deviation from VID Setting (V) ^{1, 2, 3, 4} | | |
|---------------------|--------------------------------------------------------------|----------------------------|----------------------------|
| | Maximum Voltage 1.40 mΩ | Typical Voltage 1.48 mΩ | Minimum Voltage 1.55 mΩ |
| 0 | 0.000 | -0.019 | -0.038 |
| 5 | -0.007 | -0.026 | -0.046 |
| 10 | -0.014 | -0.034 | -0.054 |
| 15 | -0.021 | -0.041 | -0.061 |
| 20 | -0.028 | -0.049 | -0.069 |
| 25 | -0.035 | -0.056 | -0.077 |
| 30 | -0.042 | -0.063 | -0.085 |
| 35 | -0.049 | -0.071 | -0.092 |
| 40 | -0.056 | -0.078 | -0.100 |
| 45 | -0.063 | -0.085 | -0.108 |
| 50 | -0.070 | -0.093 | -0.116 |
| 55 | -0.077 | -0.100 | -0.123 |
| 60 | -0.084 | -0.108 | -0.131 |
| 65 | -0.091 | -0.115 | -0.139 |
| 70 | -0.098 | -0.122 | -0.147 |
| 75 | -0.105 | -0.130 | -0.154 |

Intel® Core™2 Duo Processor E8000 Series V_{CC} Static and Transient Tolerance



NOTES:

(From: <http://download.intel.com/design/processor/datashts/318732.pdf>)

3. Q: My motherboard is with NVIDIA Geforce 7050/6150/6100 chipset. I use the VGA driver 175.19 from NVIDA website under Windows XP SP1. After installing the driver, I get 640X480 4bit color under Windows XP. But using the driver from your support CD, it has no problem.

A: We recommend using the driver provided by ASRock. We tested it on our products to make sure it has the best compatibility and stability. If you still want to use the VGA drivers from NVIDIA website, please update to Windows XP service pack 2. It is able to solve this problem.