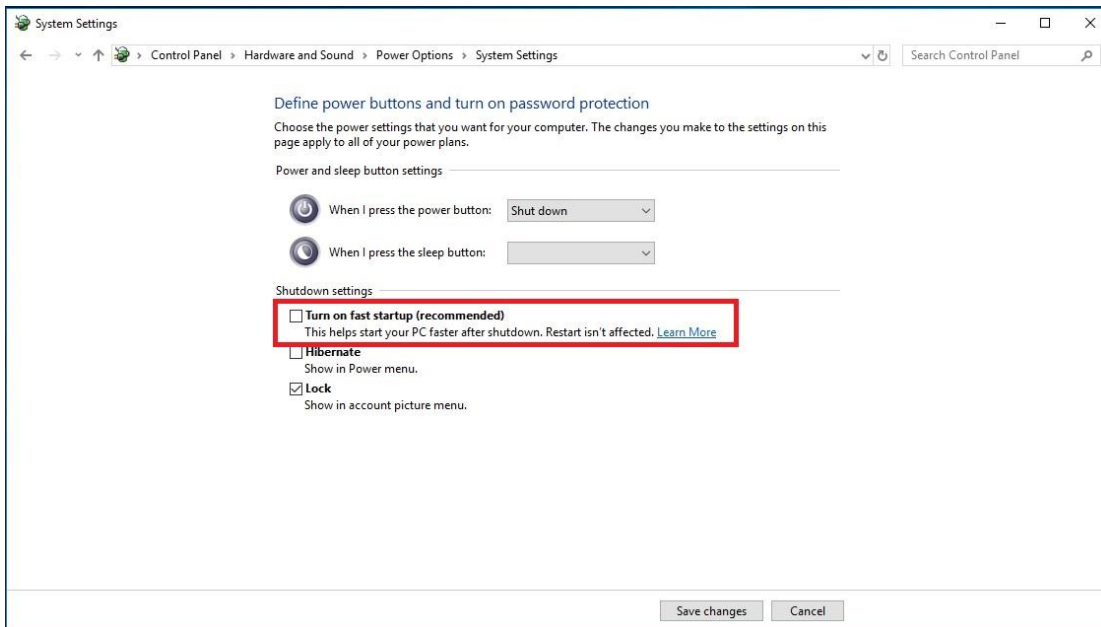


1. **Q:** How to enable Wake on LAN function under S5 status in Windows 10

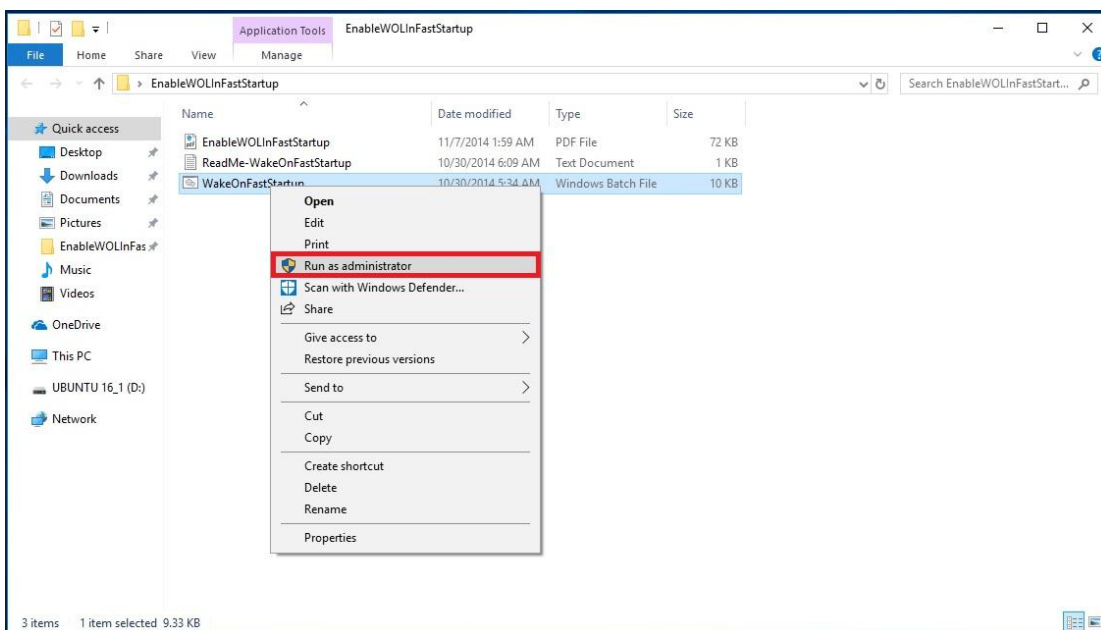
**A:** Please follow below steps to meet your application

Step1: Un-check fast startup option in Control Panel.

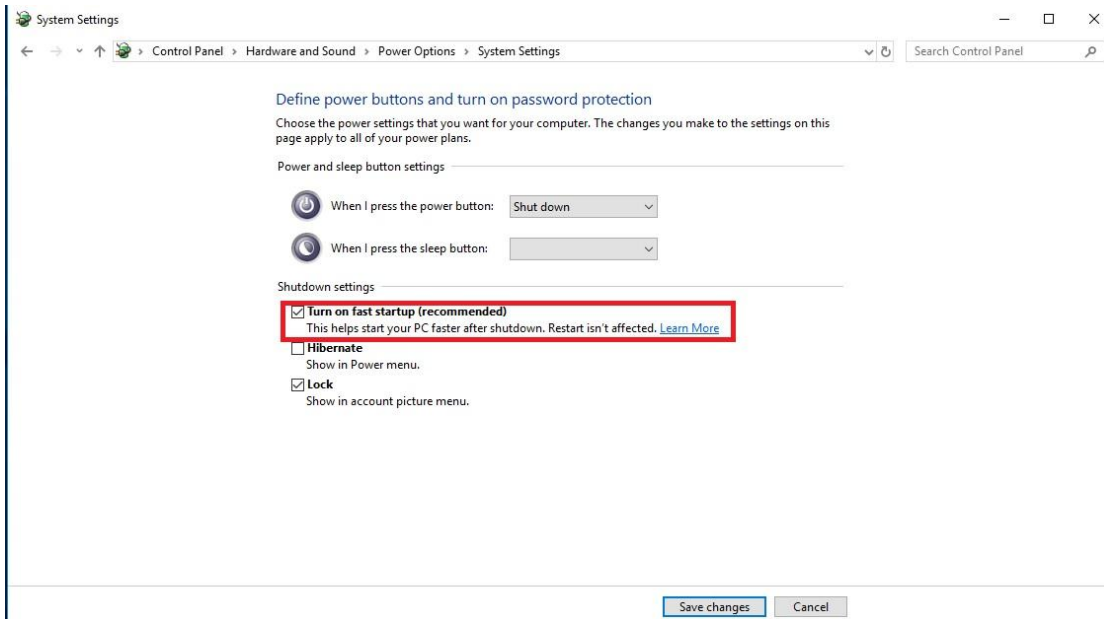


Step2: Unzip EnableWOLInFastStartup file and then right-click Run as administrator WakeOnFastStartup.bat to install it.

Link: <https://www.asrock.com/support/download/EnableWOLInFastStartup.zip>



Step3: Check fast startup option in Control Panel.



After that, Wake on LAN is enabled in S5 status.

2. Q: How do I adjust the shared memory while using Raven Ridge CPU on AM4 platform?

A: If you'd like to adjust shared memory, please follow the steps below to find and adjust the OC settings.

1. Please press "F2" or "Del" during POST to enter BIOS setup
2. Refer to the following path to adjust the OC setting.
  - a. Advanced\AMD CBS\NBIO Common Options\GFX Config IGC :Forces
  - b. Advanced\AMD CBS\NBIO Common Options\UMA Mode : UMA\_Spec
  - c. Advanced\AMD CBS\NBIO Common Options\UMA Frame Buffer Size: Choose a prefer size



# Technical Reference - Q&A

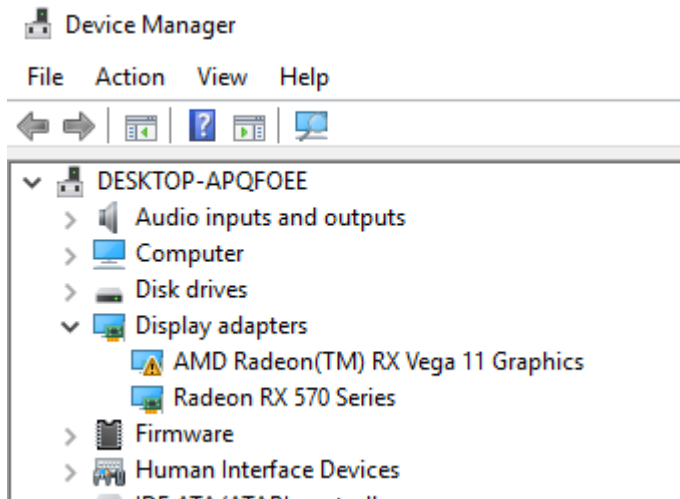
d. OC Tweaker\OC Mode Change Switch\AMD CBS Setting



3. After adjusting above options, press “F10” to save the configuration

3. Q: When I use VGA card with onboard graphics AM4 CPU, onboard display adapter driver shows exclamation mark, what should I do?

A: If you are using the VGA card and onboard display adapter shows an exclamation mark as the picture below, please follow the steps to remove exclamation mark.



1. Please press “F2” or “Del” during POST to enter BIOS setup
2. Choose primary video adapter as internal **graphics**  
Path: Advanced\AMD PBS\Primary Video Adapter\Int Graphics (IGD)

# Technical Reference - Q&A

TSD-QA (2018/03)



3. After adjusting above options , press “F10” to save the configuration.

You can try below method as well.

1. Please press “F2” or “Del” during POST to enter BIOS setup
2. Disable CSM

Path: Boot/CSM/Disable



3. After adjusting above option, press “F10” to save the configuration.