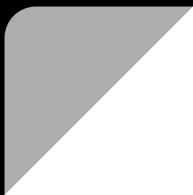




# 華擎科技 ASRock Inc.

Stock Code 3515



# Safe Harbor Statement

Except for historical information contained herein, the matters set forth in this presentation are forward looking statements that are subject to risks and uncertainties that could cause actual results to differ materially, including the impact of competitive products and pricing, timely design acceptance by our customers, timely introduction of new technologies, ability to ramp new products into volume, industry wide shifts in supply and demand for electronic products, industry overcapacity, availability of manufacturing capacity, financial stability in end markets, and other risks.



Company Profile

ASRock Product Line

Consolidated Financial Result

Business Highlight

Q&A





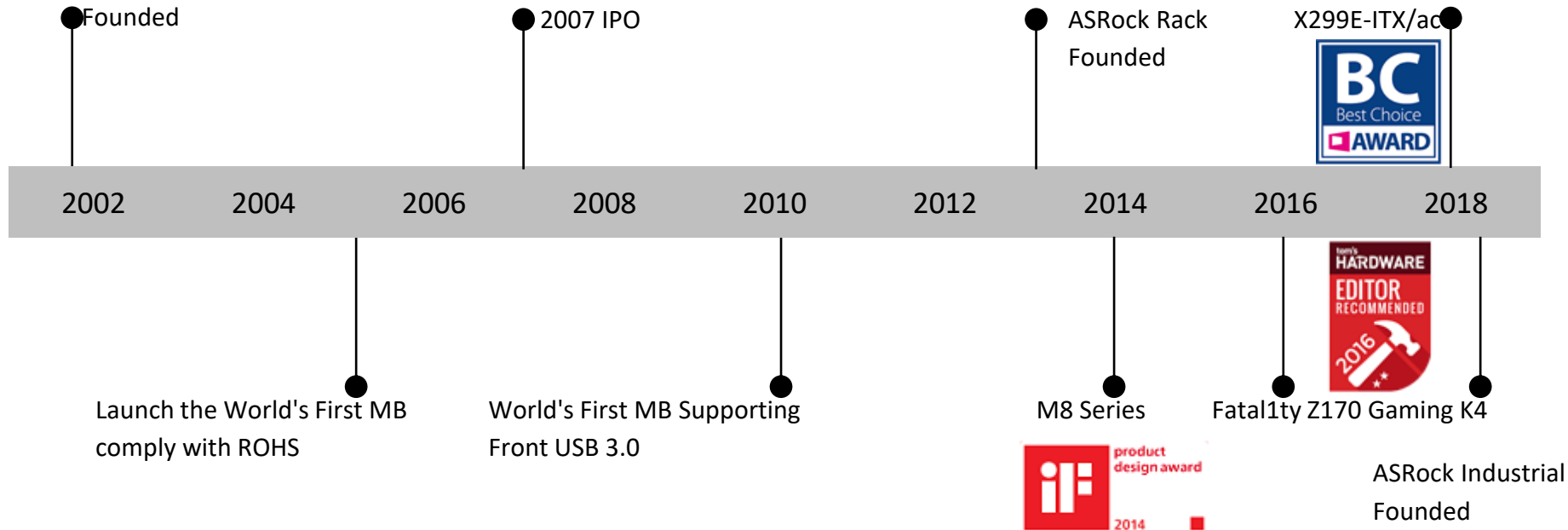
Established : 2002.May.

Capital : NT\$1,206million

Chairman : Tung Hsutien ; GM : Shiu Longloon

Core Business: MB, Server (ASRock Rack), IPC (ASRock Industrial)

# Milestones



Mini PC  
Series



Motherboard  
Series



Graphic Card  
Series



Server/Workstation  
Series



Industrial PC  
Series





## Profit & Loss

NT\$ million	2019 Q1	2020 Q1	YoY
Revenue	2,823	3,596	27.4%
COGS	(2,341)	(2,955)	26.2%
Gross Profit	482	642	33.2%
Operating Expense	(368)	(439)	19.1%
Operating Income	114	203	78.7%
Non-Operating Income (Loss)	11	22	93.6%
PBT	125	225	80.1%
Net Income	102	201	97.6%
Net Income Attributable to Stockholders	98	187	91.7%
<b>EPS (NT\$)</b>	<b>0.81</b>	<b>1.55</b>	<b>91.4%</b>
Gross Margin (%)	17%	18%	
Operating Profit Margin (%)	4%	6%	
Net Profit Margin (%)	4%	6%	
ROE (%)	2%	3%	



# Balance Sheet

NT\$ million	2019/3/31		2020/3/31	
Current Assets				
Cash and Equivalents	1,187	12%	1,999	19%
AR	1,772	18%	1,585	15%
Inventory	5,153	53%	5,070	48%
Total Current Assets	9,109	93%	10,056	95%
Other Assets	701	7%	540	5%
<b>Total Assets</b>	<b>9,810</b>	<b>100%</b>	<b>10,596</b>	<b>100%</b>
Current Liabilities				
Short-term Debt	186	2%	-	-
AP	2,494	25%	2,817	27%
Dividends Payable	-	-	483	5%
Total Current Liabilities	3,484	36%	4,326	41%
Other Liabilities	78	1%	55	1%
<b>Total Liabilities</b>	<b>3,562</b>	<b>36%</b>	<b>4,381</b>	<b>41%</b>
Capital	1,207	12%	1,206	11%
Retained Earnings	2,144	22%	1,863	18%
<b>Net Equity</b>	<b>6,248</b>	<b>64%</b>	<b>6,215</b>	<b>59%</b>
Total Liabilities and Net Equity	9,810		10,596	
<b>Book Value Per Share (NT\$)</b>	<b>51.81</b>		<b>49.27</b>	



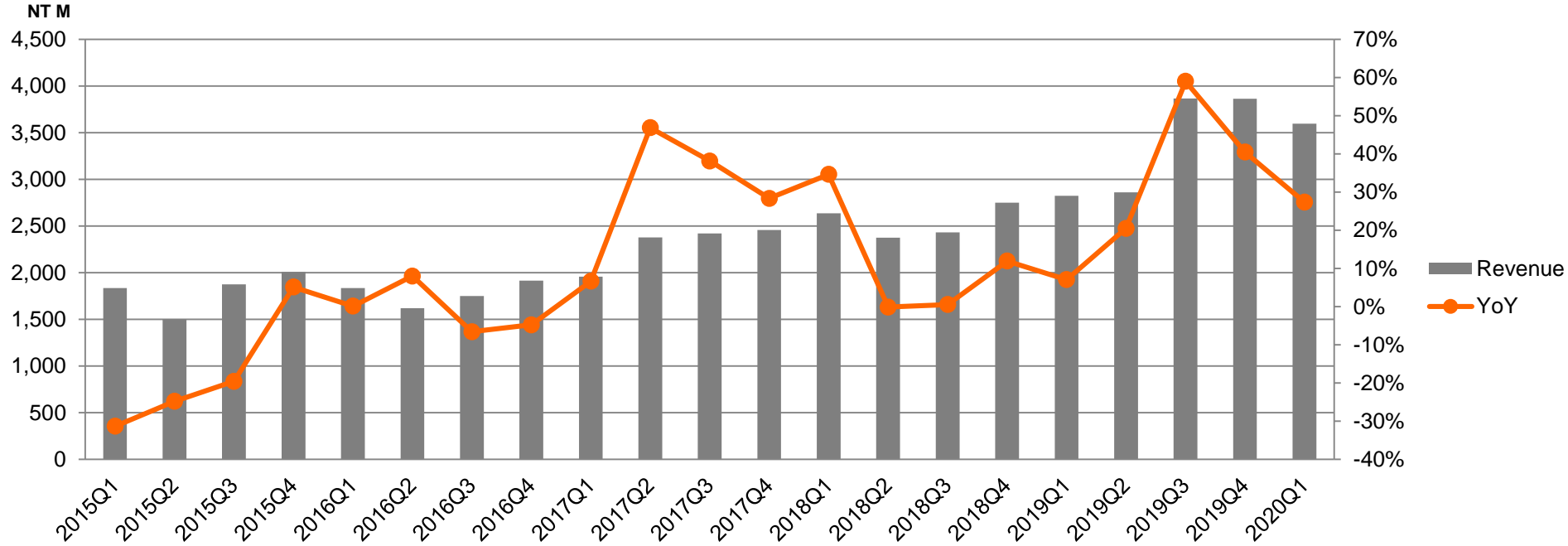
## Statement of Cash Flows

NT\$ million	2019 Q1	2020 Q1
Cash Flows from Operating Activities		
PBT	125	225
(Increase) Decrease in Accounts Receivable	(124)	33
(Increase) Decrease in Inventory	(192)	(78)
Increase (Decrease) in Accounts Payable	343	280
<b>Net Cash Provided (Used) by Operating Activities</b>	<b>50</b>	<b>185</b>
Cash Flows from Investing Activities		
Acquisition of Financial Assets at Amortized Cost	(544)	(254)
Acquisition of Property, Plant and Equipment	(7)	(3)
<b>Net Cash Provided (Used) by Investing Activities</b>	<b>(544)</b>	<b>(245)</b>
Cash Flows from Financing Activities		
Increase (Decrease) in Short-Term Debt	1	-
Increase (Decrease) in Non-Controlling Interests	-	(1)
<b>Net Cash Provided (Used) by Financing Activities</b>	<b>(7)</b>	<b>(8)</b>
Effect of Exchange Rate Changes	13	31
<b>Net Increase (Decrease) in Cash</b>	<b>(488)</b>	<b>(37)</b>
Cash, Beginning of the Period	1,675	2,036
Cash, End of the Period	1,187	1,999



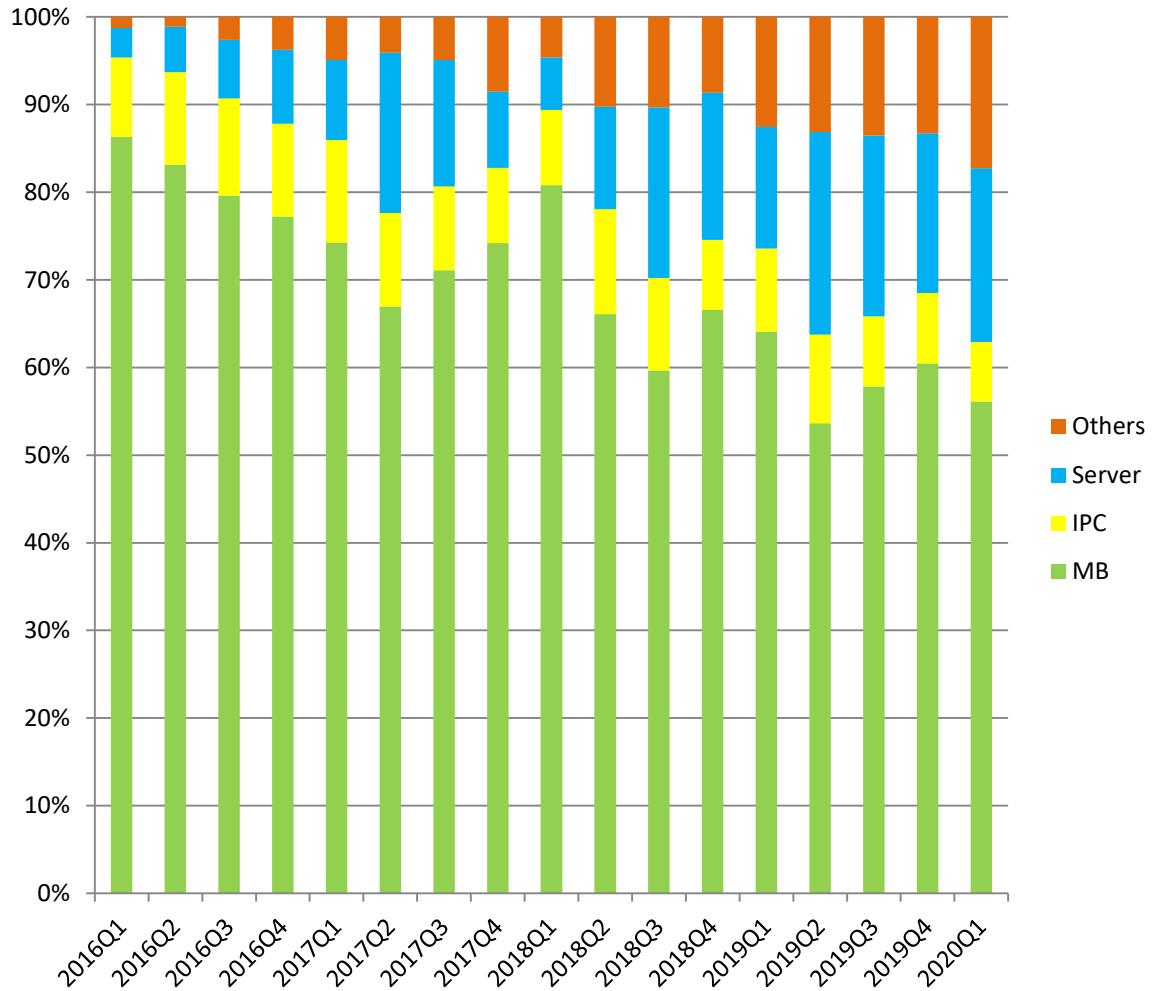


# Consolidated Revenue Trend



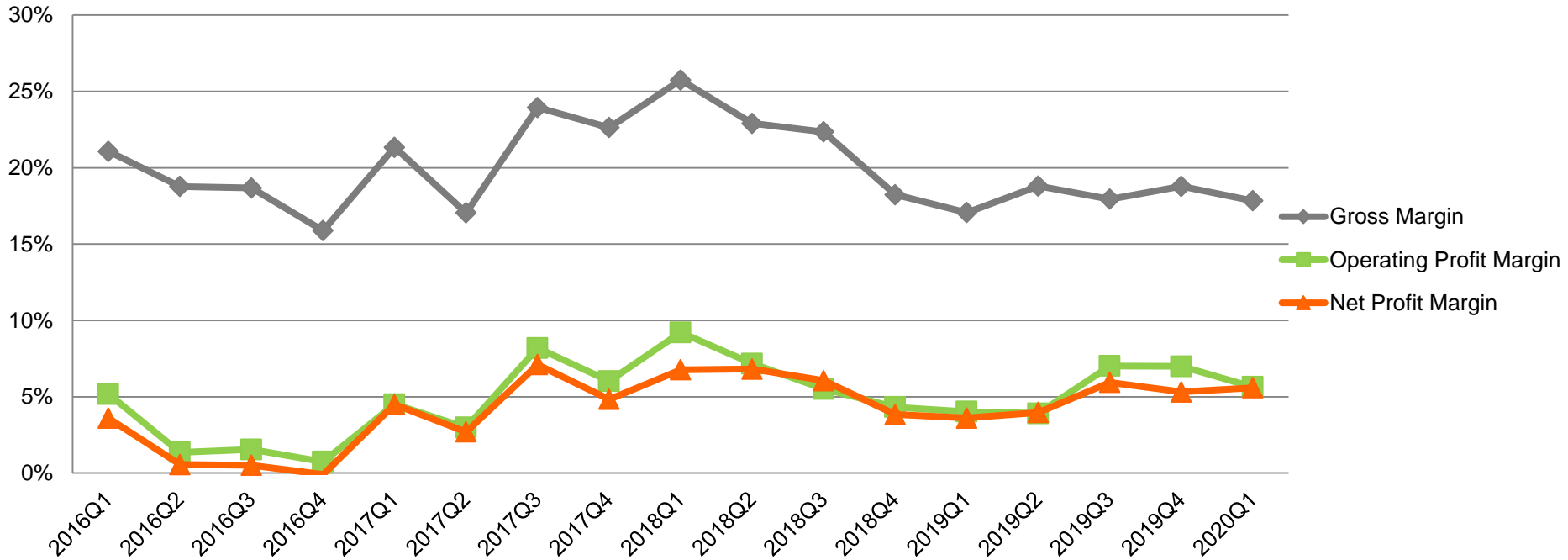


# Revenue Breakdowns by Products





# Margin Trend



The ASRock logo is positioned in the top-left corner of the image. It features the brand name in a bold, green, sans-serif font with a small registered trademark symbol. The background of the entire image is a dark, high-angle photograph of a city skyline at dusk or dawn, with the Empire State Building prominently lit in the center.

ASRock

Q & A