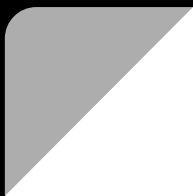




# 華擎科技 ASRock Inc.

Stock Code 3515



# Safe Harbor Statement

Except for historical information contained herein, the matters set forth in this presentation are forward looking statements that are subject to risks and uncertainties that could cause actual results to differ materially, including the impact of competitive products and pricing, timely design acceptance by our customers, timely introduction of new technologies, ability to ramp new products into volume, industry wide shifts in supply and demand for electronic products, industry overcapacity, availability of manufacturing capacity, financial stability in end markets, and other risks.



Company Profile

ASRock Product Line

Consolidated Financial Result

Business Highlight

Q&A





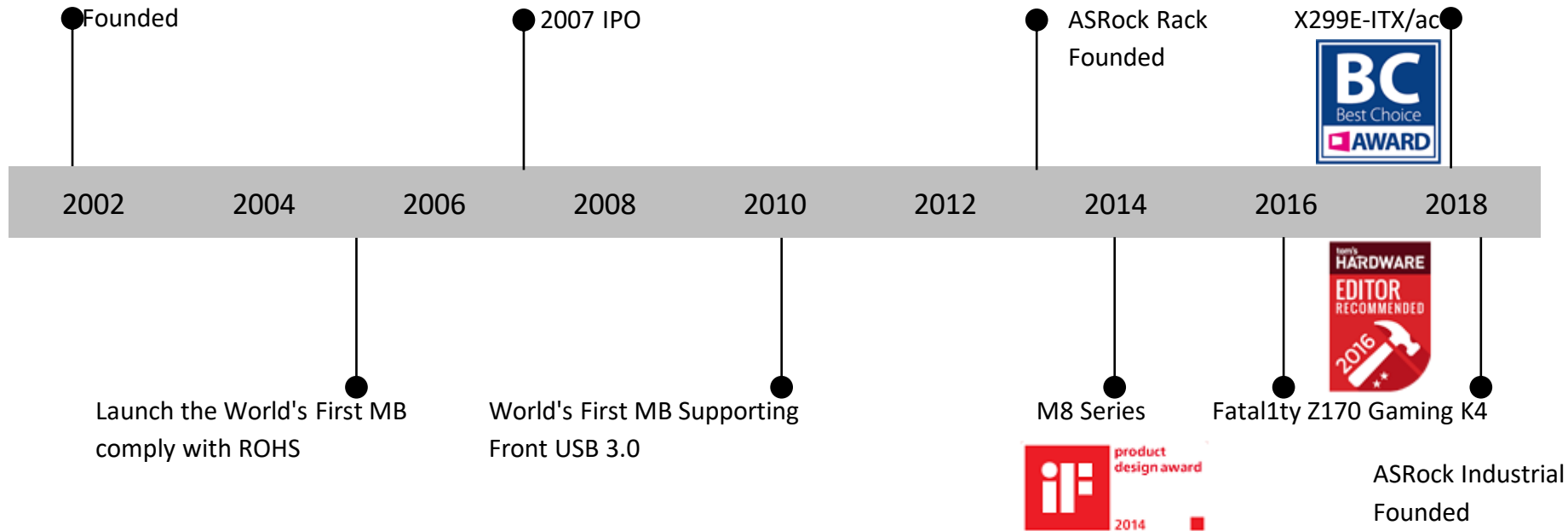
Established : 2002.May.

Capital : NT\$1,206million

Chairman : Tung Hsuetien ; GM : Shiu Longloon

Core Business: MB, Server (ASRock Rack), IPC (ASRock Industrial)

# Milestones



Mini PC  
Series



Motherboard  
Series



Graphic Card  
Series



Server/Workstation  
Series



Industrial PC  
Series





## Profit & Loss

NT\$ million	2019 H1	2020 H1	YoY
Revenue	5,685	8,314	46.2%
COGS	(4,665)	(6,674)	43.1%
Gross Profit	1,020	1,640	60.8%
Operating Expense	(795)	(945)	18.9%
Operating Income	225	695	208.6%
Non-Operating Income (Loss)	22	13	-37.9%
PBT	247	709	187.1%
Net Income	215	606	181.8%
Net Income Attributable to Stockholders	196	519	164.3%
<b>EPS (NT\$)</b>	<b>1.63</b>	<b>4.30</b>	164.5%
Gross Margin (%)	18%	20%	
Operating Profit Margin (%)	4%	8%	
Net Profit Margin (%)	4%	7%	
ROE (%)	3%	8%	



# Balance Sheet

NT\$ million	2019 H1		2020 H1	
Current Assets				
Cash and Equivalents	1,599	16%	2,509	21%
AR	2,190	21%	2,450	20%
Inventory	4,845	47%	5,207	44%
Total Current Assets	9,831	96%	11,362	95%
Other Assets	441	4%	607	5%
<b>Total Assets</b>	<b>10,272</b>	<b>100%</b>	<b>11,968</b>	<b>100%</b>
Current Liabilities				
Short-term Debt	140	1%	-	-
AP	2,742	27%	3,518	29%
Dividends Payable	483	5%	483	4%
Total Current Liabilities	4,261	41%	5,327	45%
Other Liabilities	81	1%	87	1%
<b>Total Liabilities</b>	<b>4,341</b>	<b>42%</b>	<b>5,414</b>	<b>45%</b>
Capital	1,207	12%	1,206	10%
Retained Earnings	1,760	17%	2,195	18%
<b>Net Equity</b>	<b>5,930</b>	<b>58%</b>	<b>6,554</b>	<b>55%</b>
Total Liabilities and Net Equity	10,272		11,968	
<b>Book Value Per Share (NT\$)</b>	<b>49.06</b>		<b>51.48</b>	



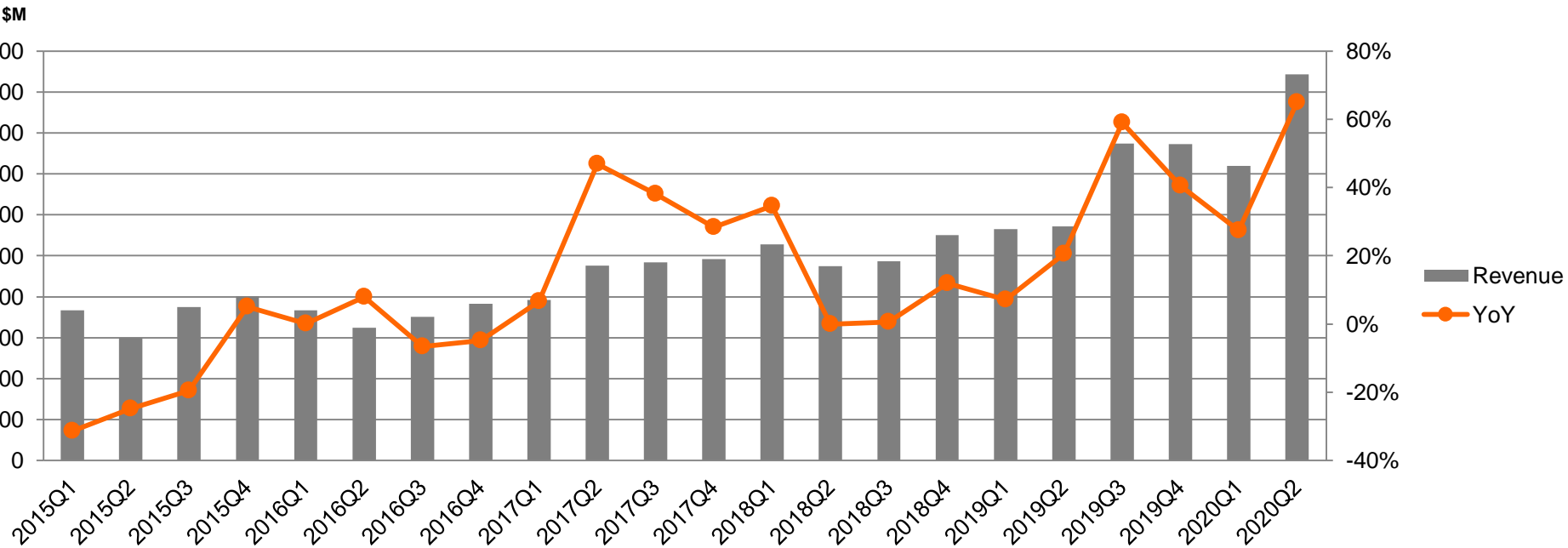
## Statement of Cash Flows

NT\$ million	2019 H1	2020 H1
Cash Flows from Operating Activities		
PBT	247	709
(Increase) Decrease in Accounts Receivable	(543)	(842)
(Increase) Decrease in Inventory	116	(215)
Increase (Decrease) in Accounts Payable	590	981
<b>Net Cash Provided (Used) by Operating Activities</b>	<b>243</b>	<b>628</b>
Cash Flows from Investing Activities		
Acquisition of Financial Assets at Amortized Cost	(303)	(90)
Acquisition of Property, Plant and Equipment	(10)	(12)
<b>Net Cash Provided (Used) by Investing Activities</b>	<b>(300)</b>	<b>(94)</b>
Cash Flows from Financing Activities		
Increase (Decrease) in Short-Term Debt	(44)	-
<b>Net Cash Provided (Used) by Financing Activities</b>	<b>(61)</b>	<b>(19)</b>
Effect of Exchange Rate Changes	41	(41)
<b>Net Increase (Decrease) in Cash</b>	<b>(76)</b>	<b>473</b>
Cash, Beginning of the Period	1,675	2,036
Cash, End of the Period	1,599	2,509



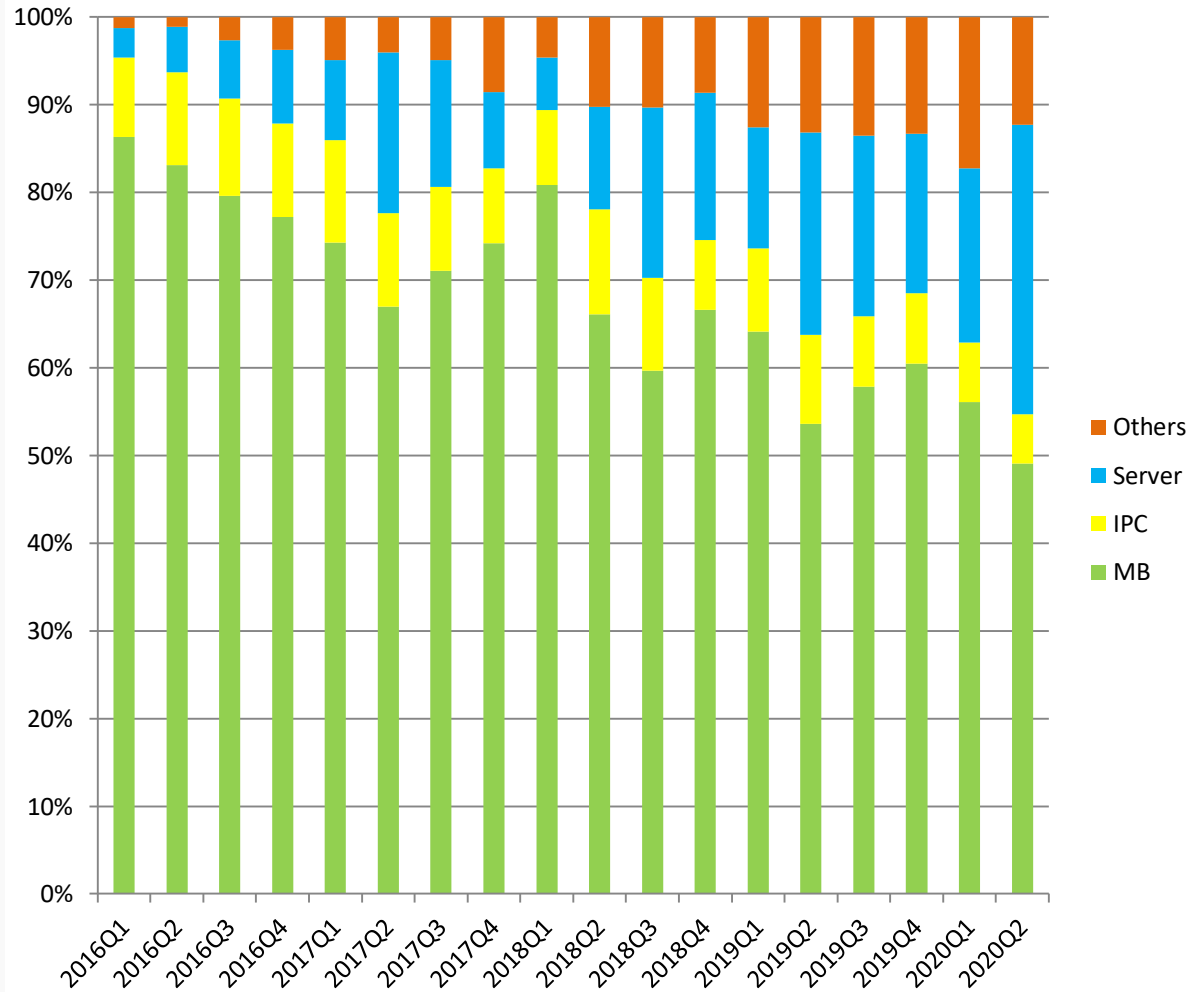


# Consolidated Revenue Trend



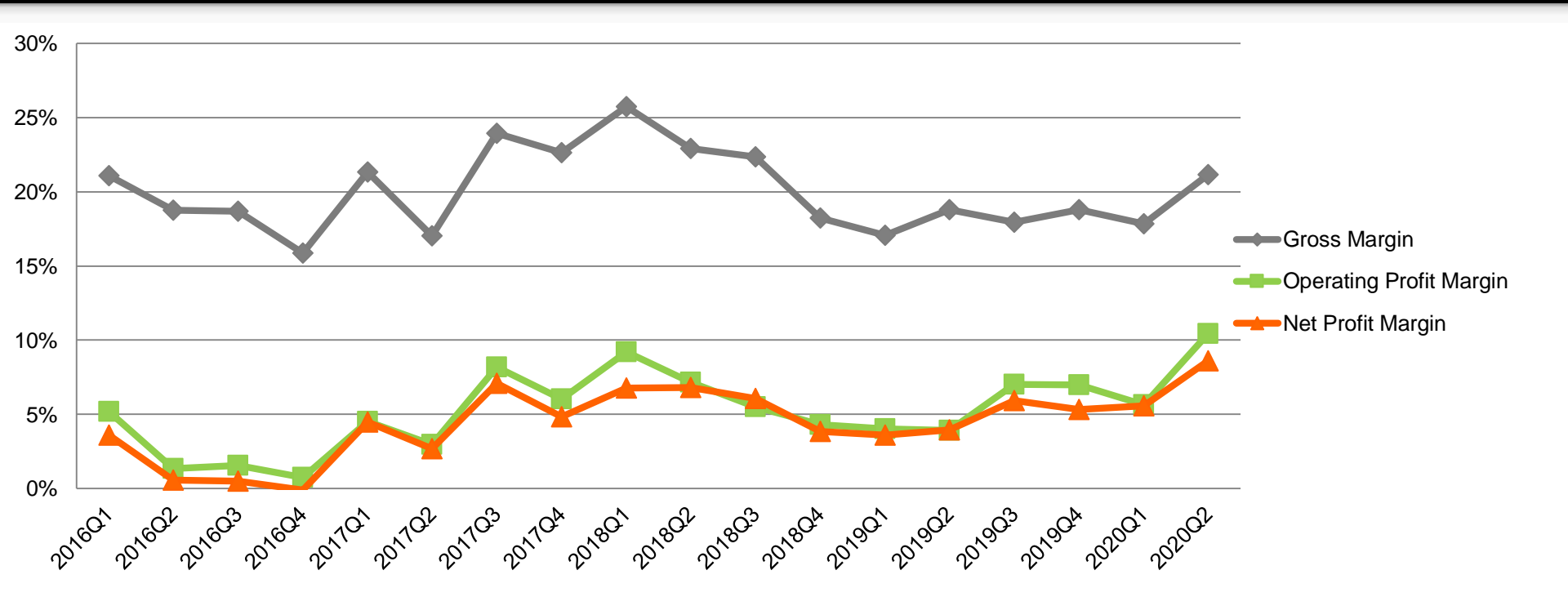


# Revenue Breakdowns by Products





# Margin Trend



The ASRock logo is positioned in the top-left corner of the image. It features the brand name in a bold, green, sans-serif font with a small registered trademark symbol (®) to the upper right of the 'k'. The background of the entire image is a dark, high-angle photograph of a city skyline at dusk or dawn, with the Empire State Building prominently lit in the center.

ASRock®

Q & A