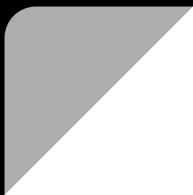




華擎科技 ASRock Inc.

Stock Code 3515



Safe Harbor Statement

Except for historical information contained herein, the matters set forth in this presentation are forward looking statements that are subject to risks and uncertainties that could cause actual results to differ materially, including the impact of competitive products and pricing, timely design acceptance by our customers, timely introduction of new technologies, ability to ramp new products into volume, industry wide shifts in supply and demand for electronic products, industry overcapacity, availability of manufacturing capacity, financial stability in end markets, and other risks.



Company Profile

ASRock Product Line

Consolidated Financial Result

Business Highlight

Q&A





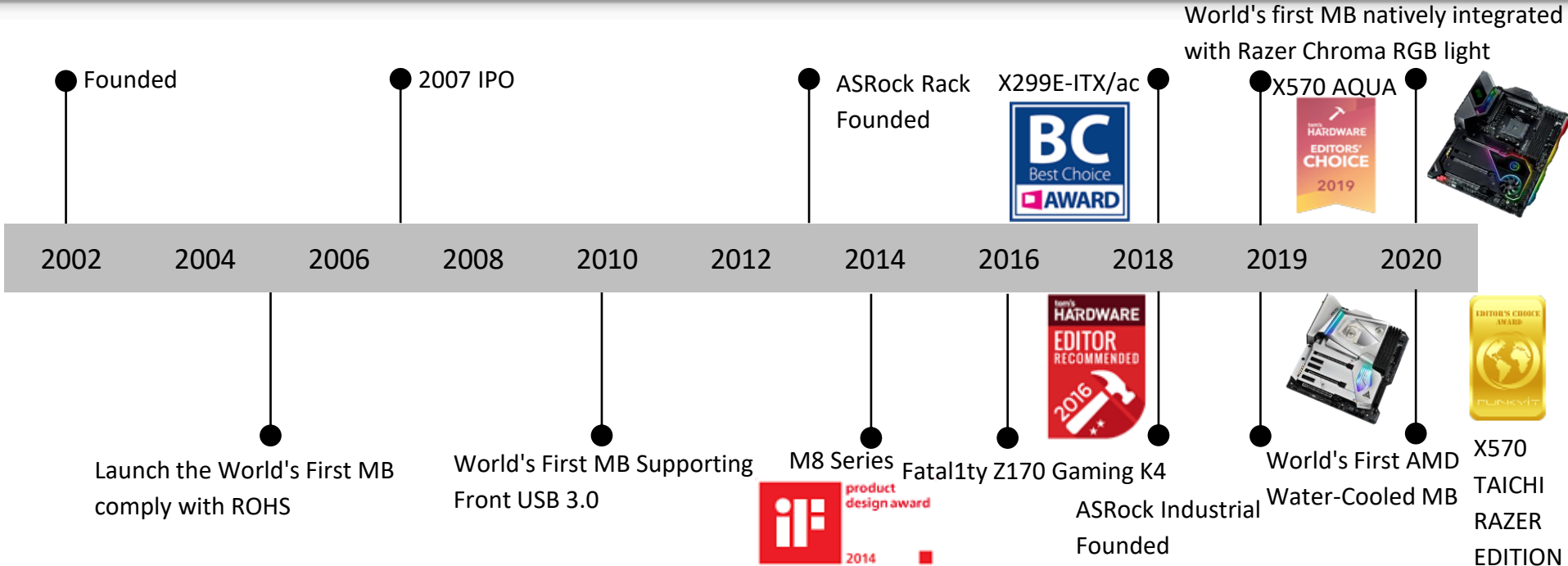
Established : 2002.May.

Capital : NT\$1,206million

Chairman : Tung Hsutien ; GM : Shiu Longloon

Core Business: MB, Server (ASRock Rack), IPC (ASRock Industrial), Mini PC, Graphics Card

Milestones



Mini PC
Series



Motherboard
Series



Graphics Card
Series



Server/Workstation
Series



Industrial PC
Series





Profit & Loss

NT\$ million	2019	2020	YoY
Revenue	13,415	17,912	34%
COGS	(10,976)	(14,060)	28%
Gross Profit	2,439	3,852	58%
Operating Expense	(1,673)	(1,994)	19%
Operating Income	767	1,858	142%
Non-Operating Income (Loss)	18	(2)	-113%
PBT	785	1,856	136%
Net Income	650	1,509	132%
Net Income Attributable to Stockholders	597	1,363	128%
EPS (NT\$)	4.95	11.30	128%
Gross Margin (%)	18%	22%	
Operating Profit Margin (%)	6%	10%	
Net Profit Margin (%)	5%	8%	
ROE (%)	10%	21%	



Balance Sheet

NT\$ million	2019/12/31		2020/12/31	
Current Assets				
Cash and Equivalents	2,036	20%	2,763	24%
AR	1,621	16%	1,649	14%
Inventory	4,992	49%	5,830	50%
Total Current Assets	9,706	95%	11,109	95%
Other Assets	560	5%	606	5%
Total Assets	10,266	100%	11,716	100%
Current Liabilities				
AP	2,537	25%	2,730	23%
Total Current Liabilities	3,747	36%	4,326	37%
Total Liabilities	3,812	37%	4,407	38%
Capital	1,206	12%	1,206	10%
Retained Earnings	2,159	21%	3,033	26%
Net Equity	6,454	63%	7,308	62%
Total Liabilities and Net Equity	10,266		11,716	
Book Value Per Share (NT\$)	51.37		57.20	

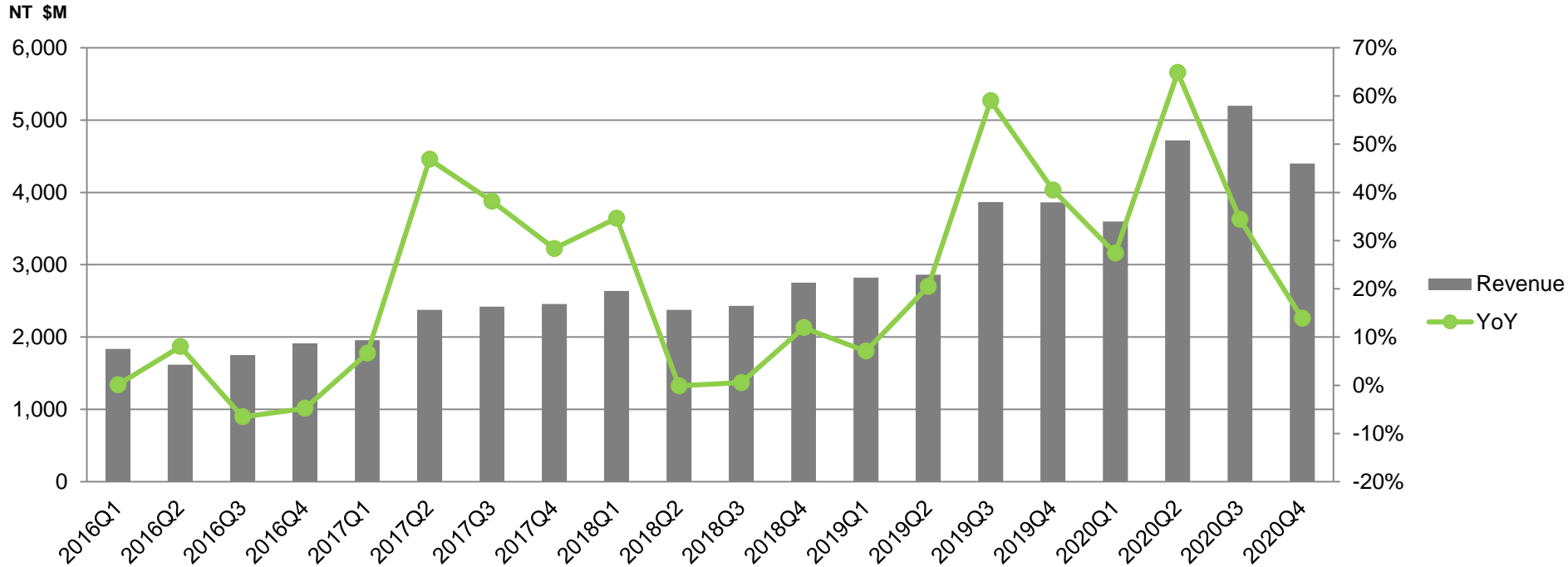


Statement of Cash Flows

NT\$ million	2019	2020
Cash Flows from Operating Activities		
PBT	785	1,856
(Increase) Decrease in Accounts Receivable	16	(24)
(Increase) Decrease in Inventory	(31)	(839)
Increase (Decrease) in Accounts Payable	386	192
Net Cash Provided (Used) by Operating Activities	1,346	1,352
Cash Flows from Investing Activities		
Acquisition of Financial Assets at Amortized Cost	(389)	-
Net Cash Provided (Used) by Investing Activities	(393)	73
Cash Flows from Financing Activities		
Cash Dividends Paid	(483)	(483)
Net Cash Provided (Used) by Financing Activities	(505)	(516)
Effect of Exchange Rate Changes	(87)	(183)
Net Increase (Decrease) in Cash	361	727
Cash, Beginning of the Period	1,675	2,036
Cash, End of the Period	2,036	2,763

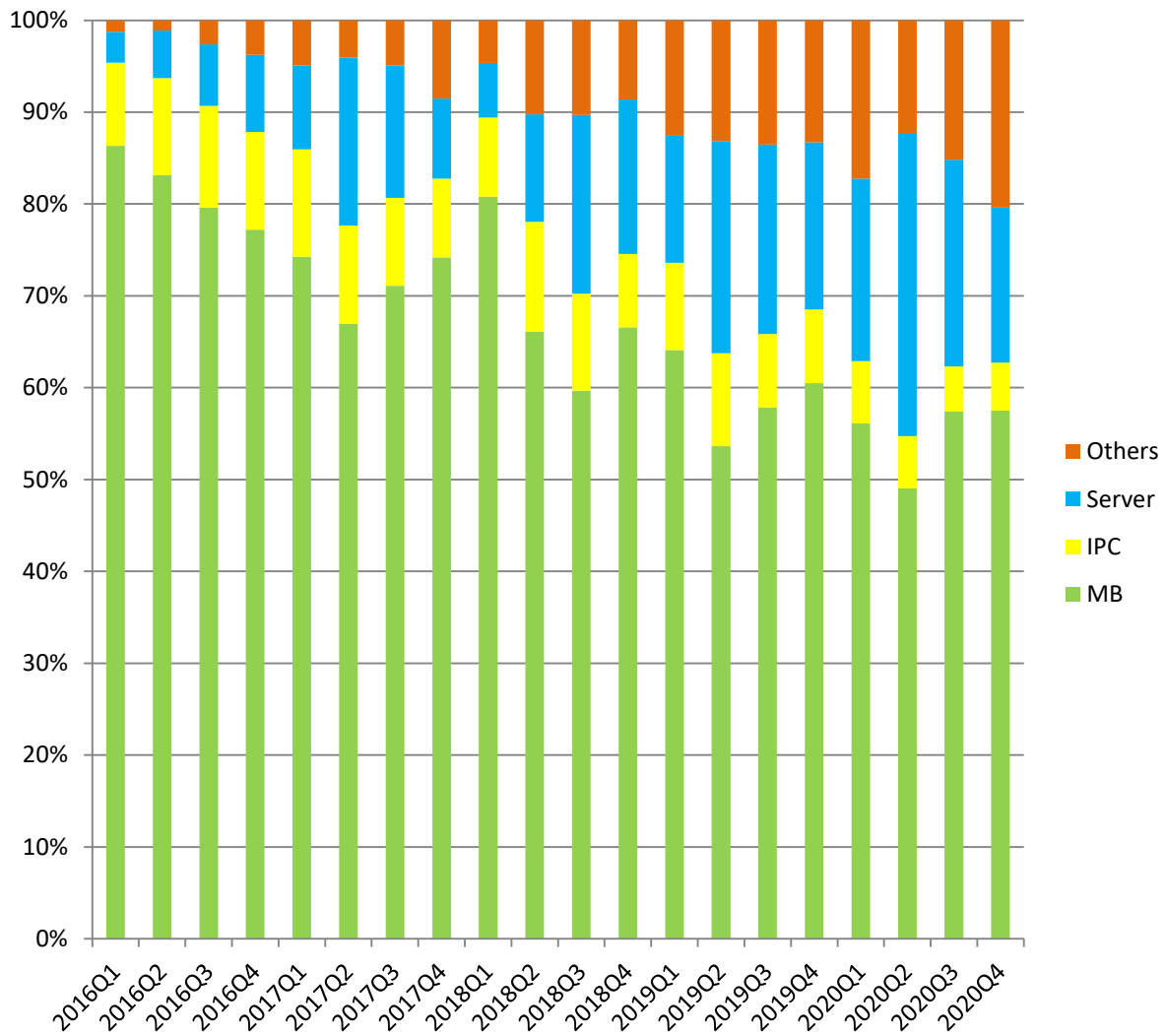


Consolidated Revenue Trend



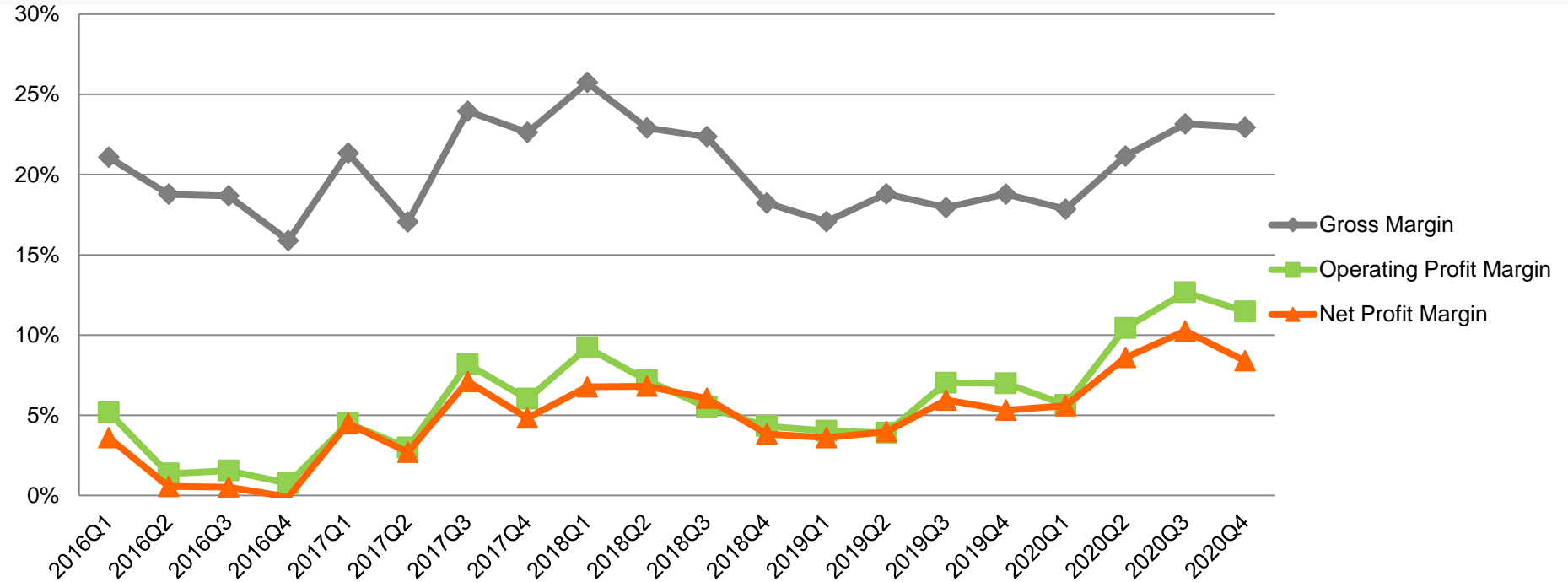


Revenue Breakdowns by Products





Margin Trend



The ASRock logo is positioned in the top-left corner of the image. It features the brand name in a bold, green, sans-serif font with a small registered trademark symbol (®) to the upper right of the 'k'. The background of the entire image is a dark, high-angle photograph of a city skyline at dusk or dawn, with the Empire State Building prominently lit in the center.

ASRock®

Q & A