

Technical Reference - Q&A

1. Q: I'm using 4 GB system memory under Windows XP Professional x64 Edition. Why can't I enable hibernation in the Power Option of Control Panel? It does not have hibernation tab in it!

A: Windows XP Professional x64 Edition does not support hibernation with more than 4GB system memory. Please refer to the Microsoft Knowledge Base for details:
<http://support.microsoft.com/kb/888575>

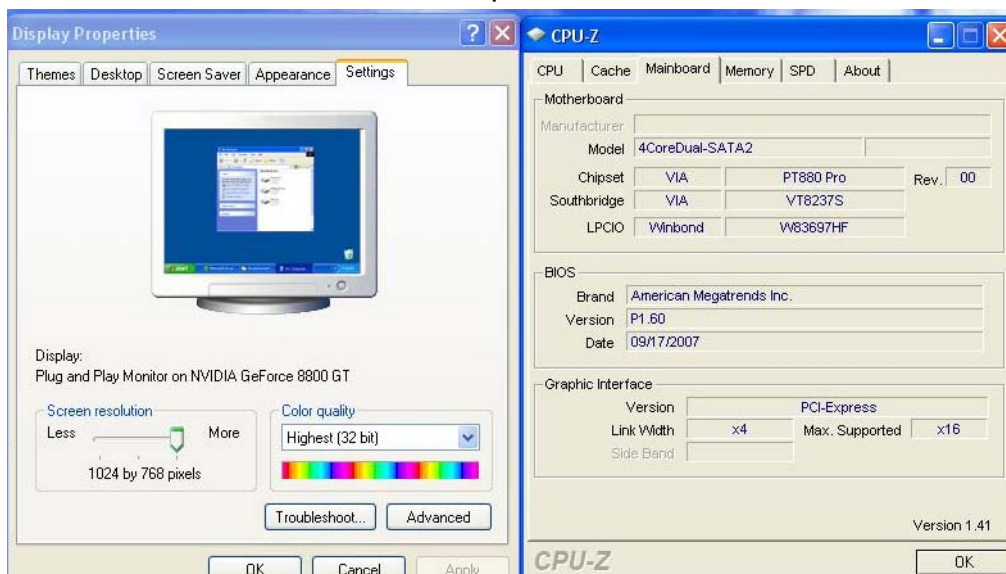
2. Q: I'm using NVIDIA® AGP card under Windows Vista on my 775Dual-VSTA / 4CoreDual-VSTA / 4CoreDual-SATA2. When I rate the computer's performance, the screen suddenly becomes abnormal. Why?

A: The problem happens with newer Nvidia VGA driver version 1xx.xx (i.e. 163.69) Please change your Nvidia driver to older version 9x.xx (i.e. 97.19) to solve this problem.

3. Q: I use a NVIDIA® 8800GT PCIE VGA card on VIA chipset motherboard. But I got black screen on the monitor. How do I solve it?

A: The NVIDIA® 8800GT PCIE VGA card is GEN2 mode VGA card. Unfortunately VIA chipset does not support GEN2 mode VGA card. The only solution is to set 8800GT PCIE VGA card to GEN1 mode.

We have tested 8800GT PCIE VGA card. After flashing GEN1 mode BIOS for 8800GT, it works fine on VIA chipset motherboard.



Please contact VGA card vender to get the VGA BIOS with GEN1 mode for your 8800GT PCIE VGA card."