

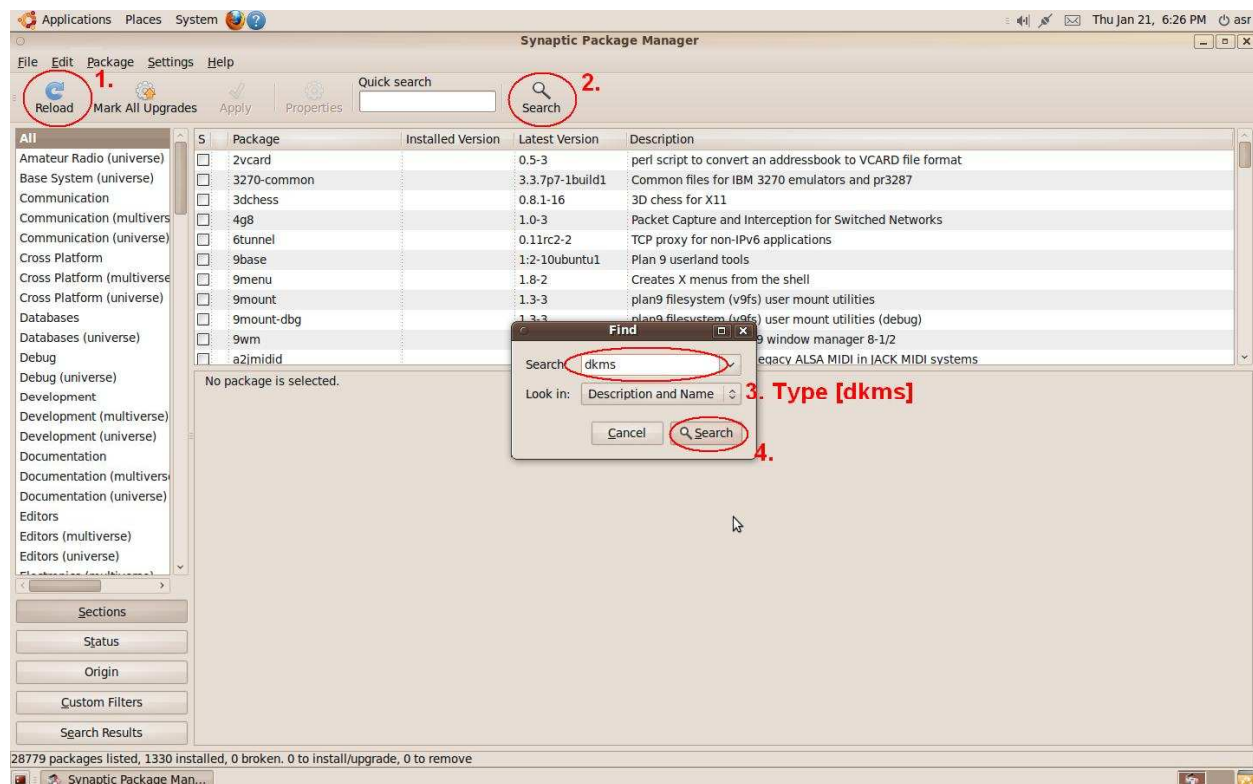
## Technical Reference - Q&A

### 1. Q: How to install IR driver under Ubuntu 9.10 with ION330HT series?

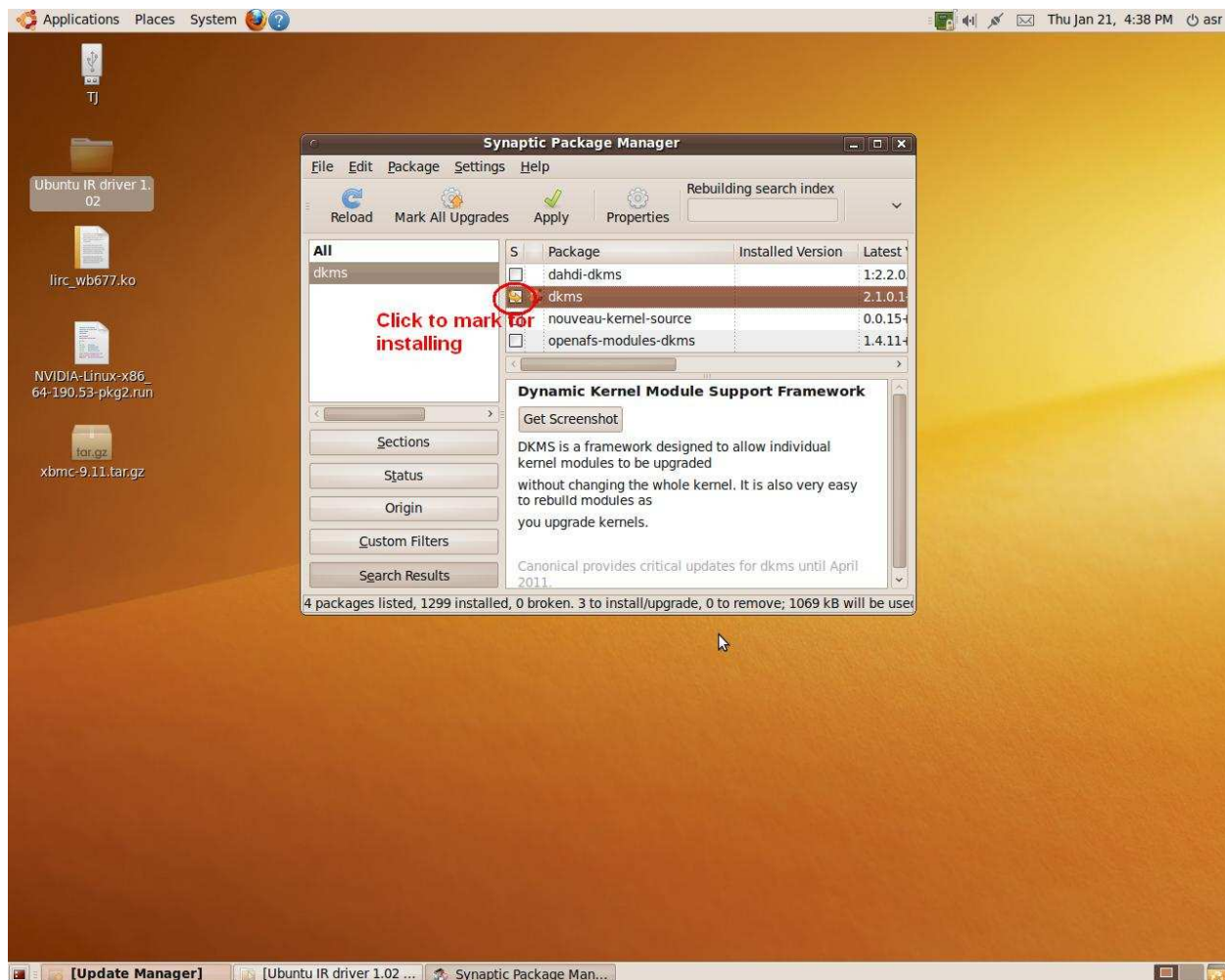
**A:**

※Since there may be several downloads or updates during the installation, please connect your system to the Internet before you start the installation.

1. Click on System on the tool bar > Administration > Synaptic Package Manager
2. Click Reload. After reloading, click Search and search for [dkms]

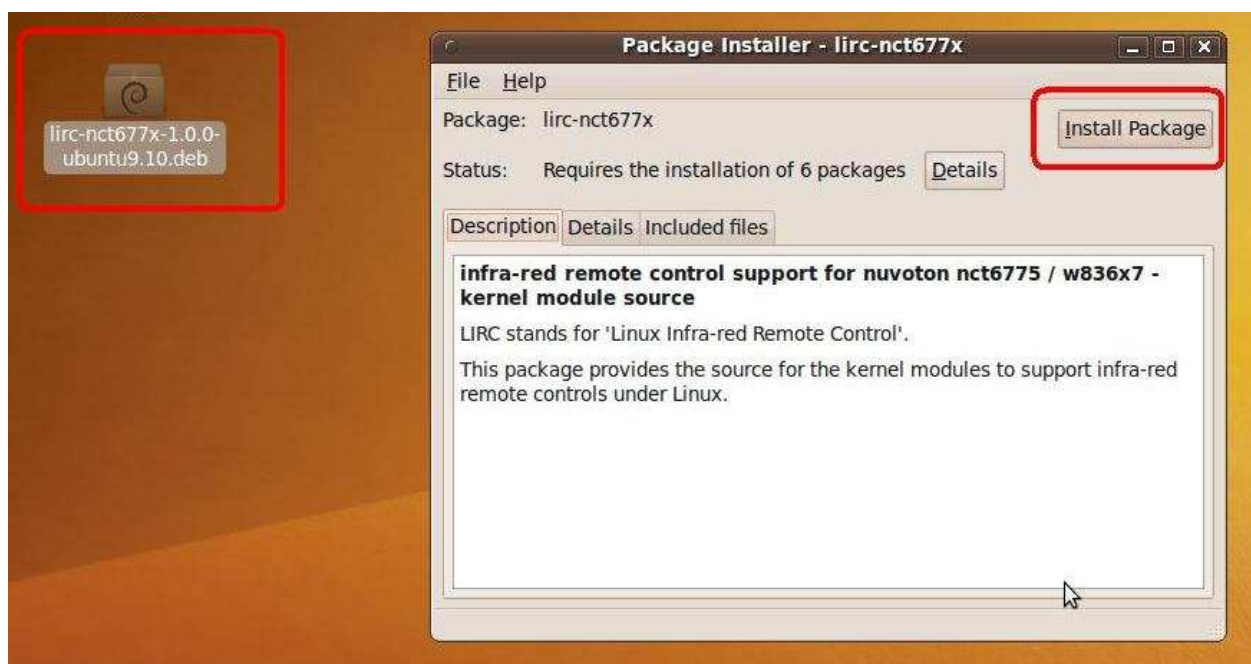


3. Mark [dkms] for installation, and click [Apply].



4. Choose [lirc-nct677x-1.0.0-ubuntu9.10 .deb]<sup>1</sup> file, and double click the left key of mouse.

5. Click [Install Package]



6. At below screen, choose [None] for [remote control configuration], [None] for [IR transmitter, if present] ;and click [Forward].

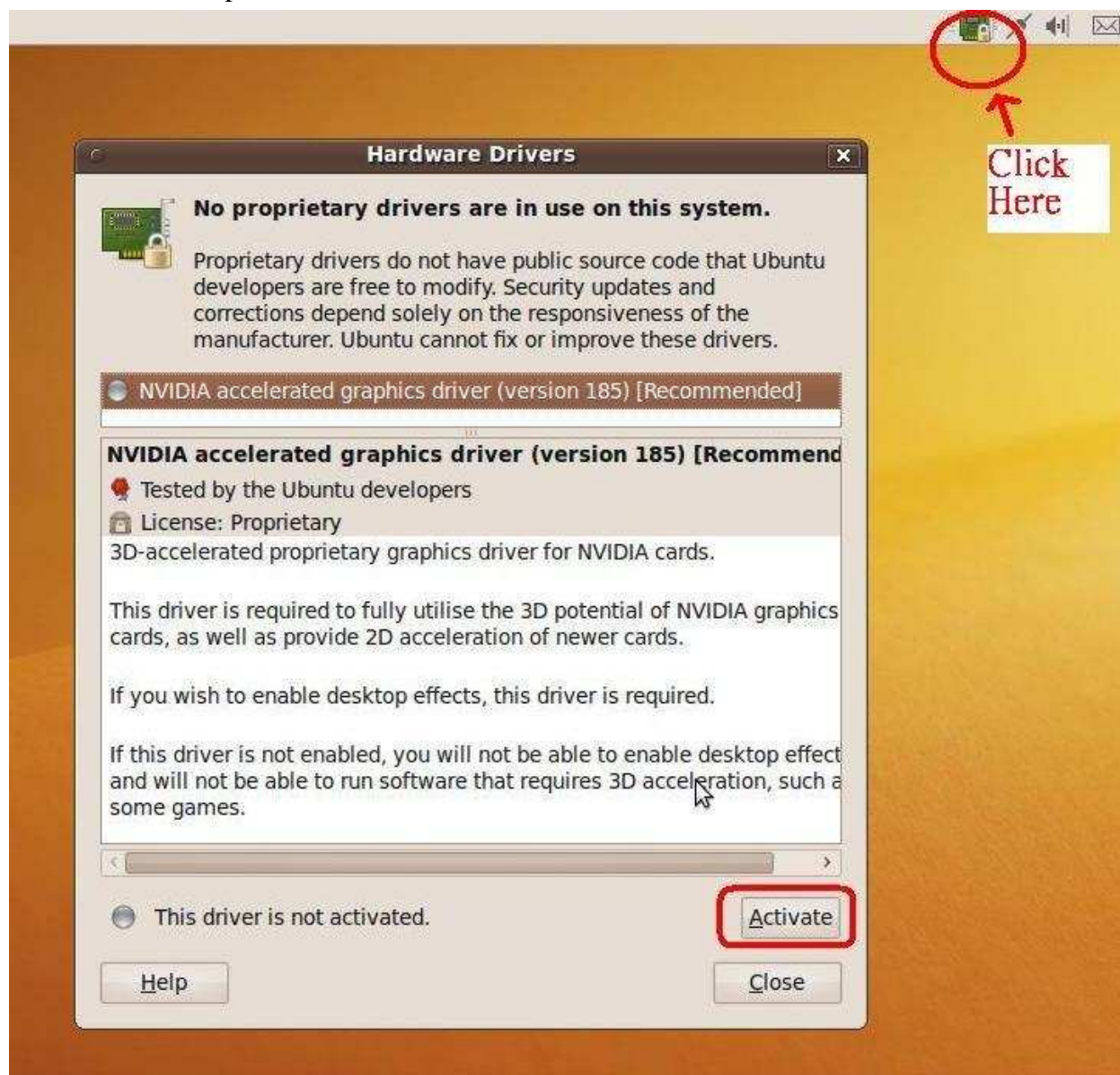


7. During install IR driver, [Configuring Lirc] page will show again. Please choose [Nuvoton Transceivers/Remotes] for [remote control configuration], [None] for [IR transmitter, if present] and click [Forward]





8. If you haven't installed Nvidia VGA driver, please install the VGA driver v185 or latter form System > Administration > Hardware Drivers. You may also find Hardware Drivers form the toolbar like below picture.



9. Install [XBMC], please refer below link to install XBMC.

Link:

[http://xbmc.org/wiki/?title=HOW-TO\\_install\\_XBMC\\_for\\_Linux\\_on\\_Ubuntu\\_with\\_a\\_minimal\\_installation\\_step-by-step](http://xbmc.org/wiki/?title=HOW-TO_install_XBMC_for_Linux_on_Ubuntu_with_a_minimal_installation_step-by-step)

10. After install XBMC, you can use Remote Controller under XBMC.

※ **Note 1.** The version may be updated once a while, please check our website for latest.

※ If you update new kernel, please follow below steps to install SRC driver again:

A. Install Linux “lirc-nct677x-src-1.0.4-ubuntu9.10” driver, like above step4~step7.

Link: <http://www.asrock.com/nettop/download.asp?Model=ION%20330HT&o=Linux>

B. Enter ubuntu Terminal.

C. Key in : `sudo dkms add -m lirc-nct677x-src -v 1.0.4-ubuntu9.10`

D. Key in : `sudo dkms build -m lirc-nct677x-src -v 1.0.4-ubuntu9.10`

E. Key in : `sudo dkms install -m lirc-nct677x-src -v 1.0.4-ubuntu9.10`

F. Restart your system.

G. And you can use Remote controller under XBMC.