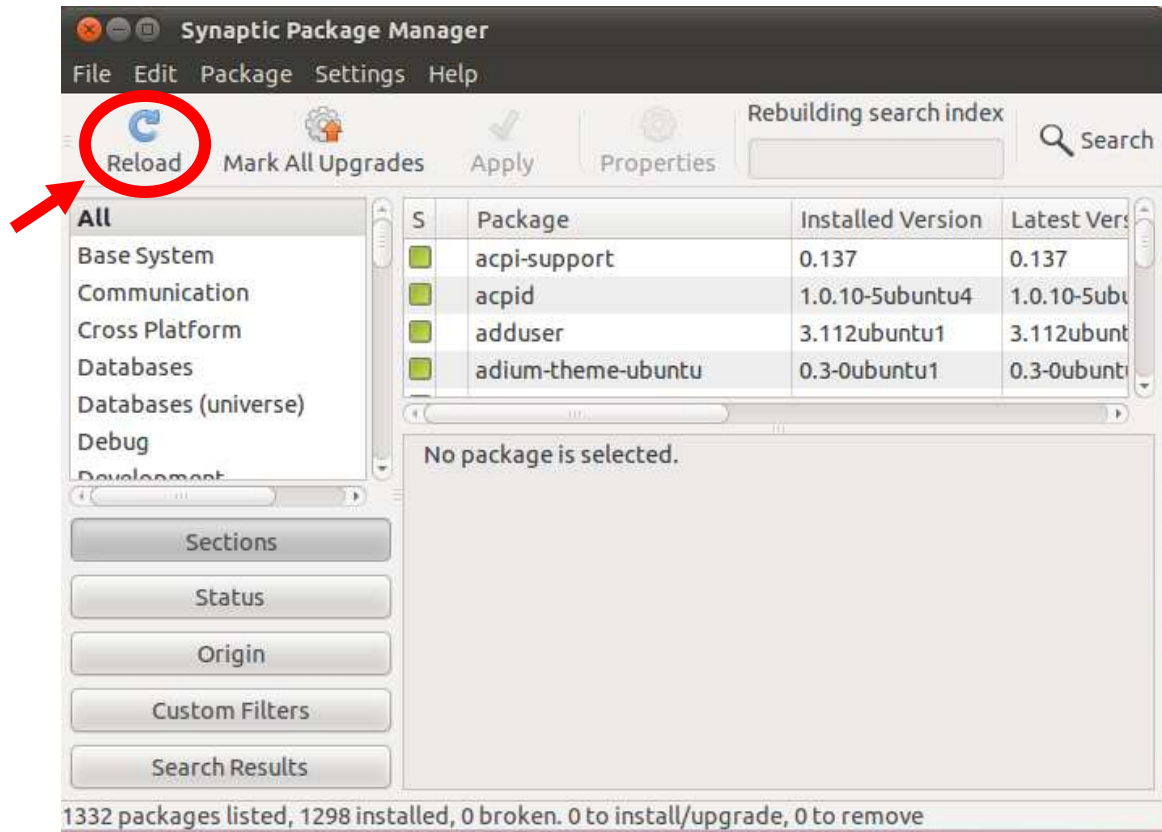
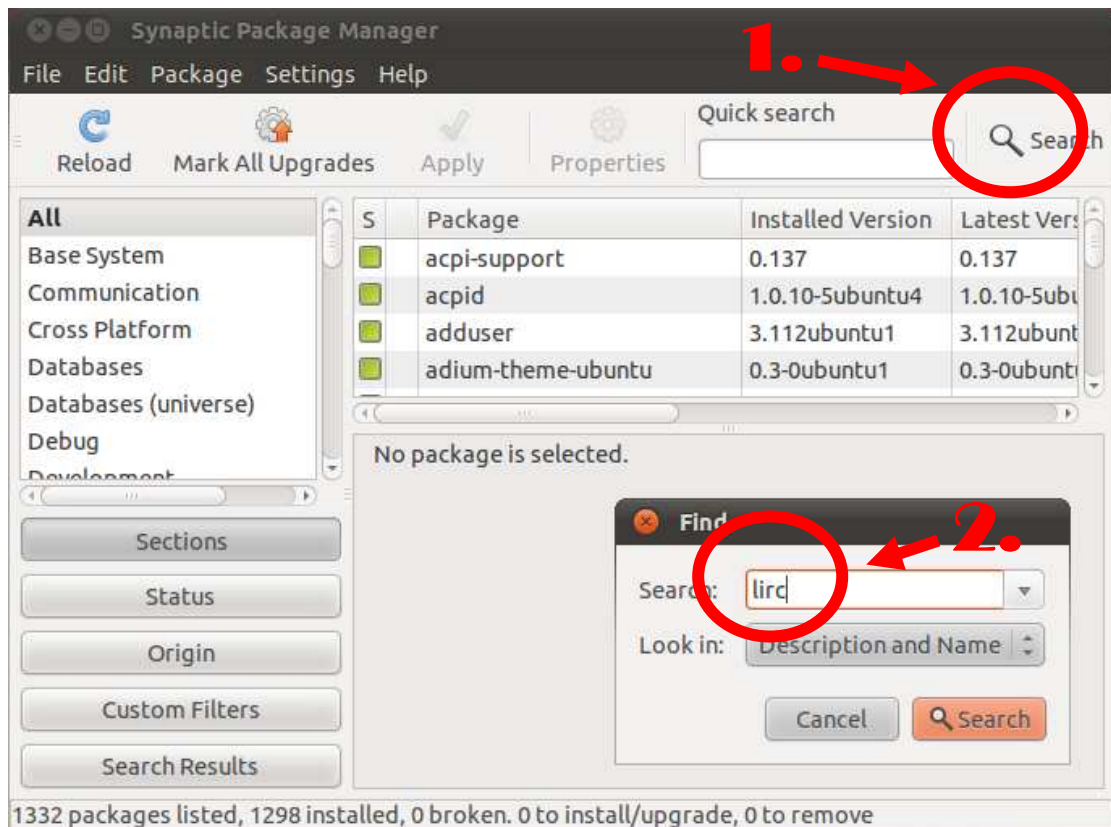


Installation Guide of lirc driver under Ubuntu 10.10 (kernel 2.6.35-22) for Vision3D

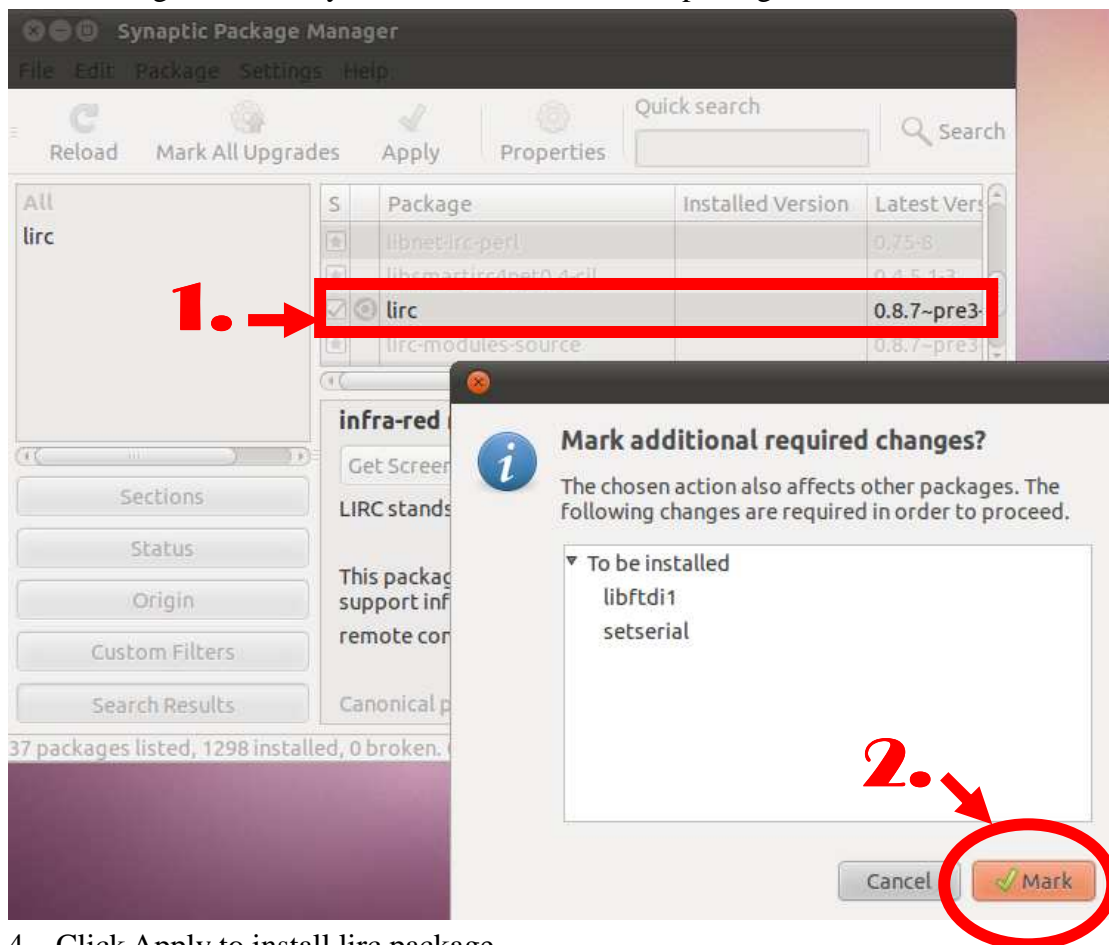
1. Open Synaptic Package Manager and click “Reload” button for updating.



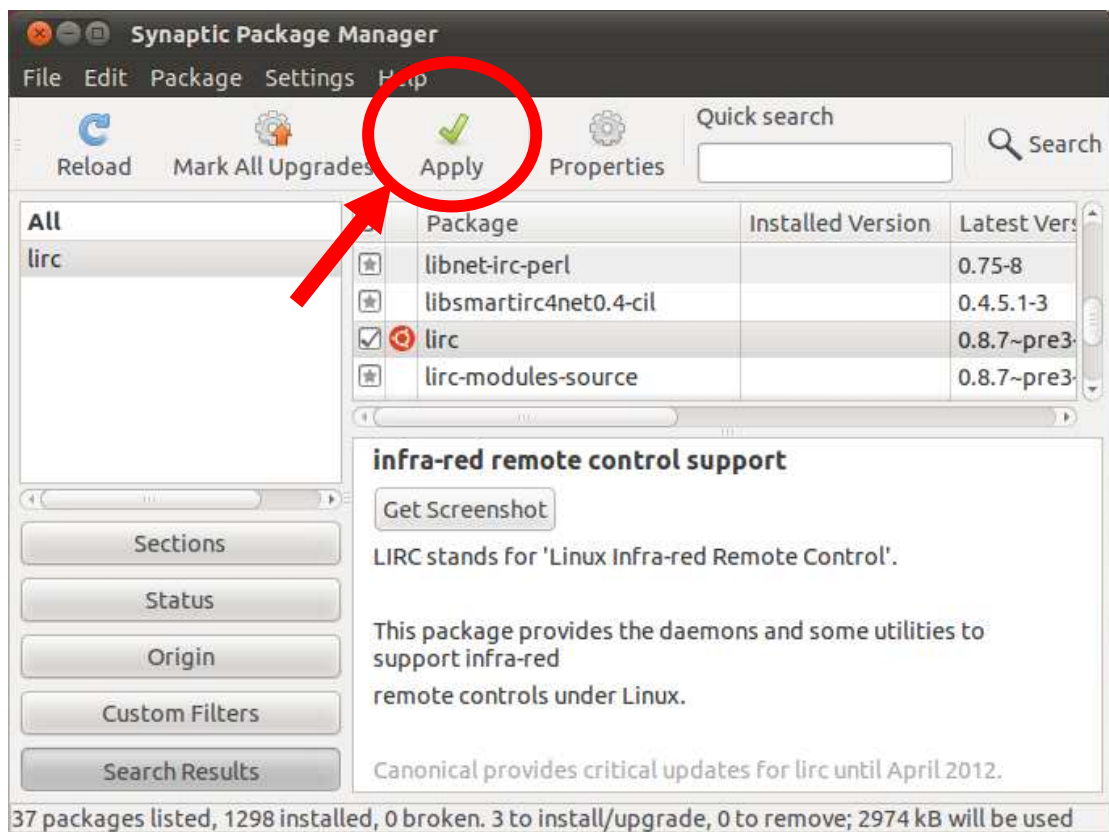
2. Enter “lirc” for searching.



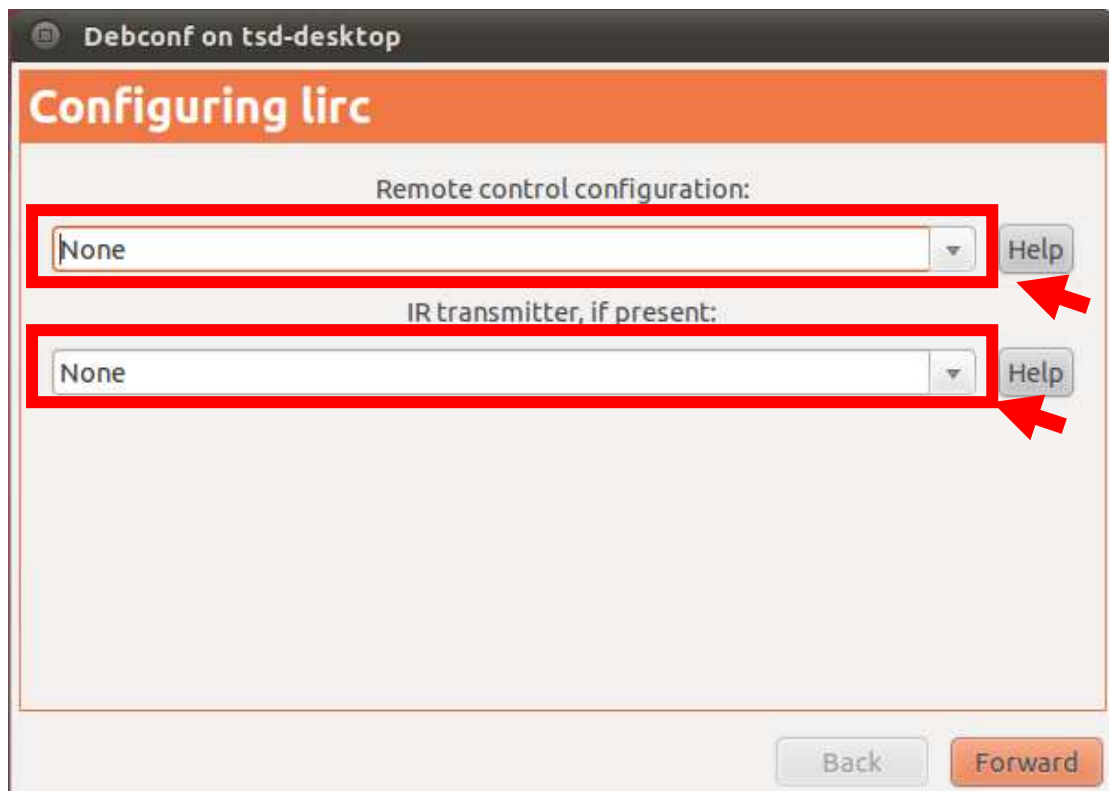
3. Click right button of your mouse and mark “irc” package to install.



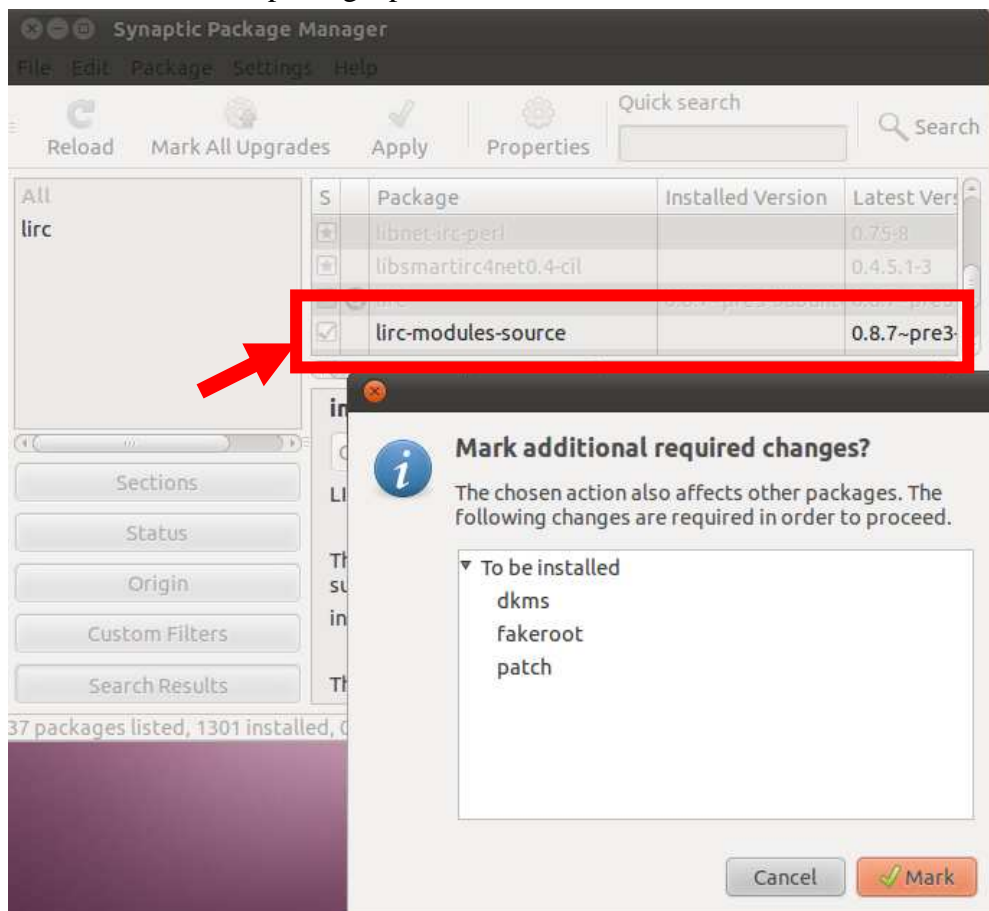
4. Click Apply to install lirc package



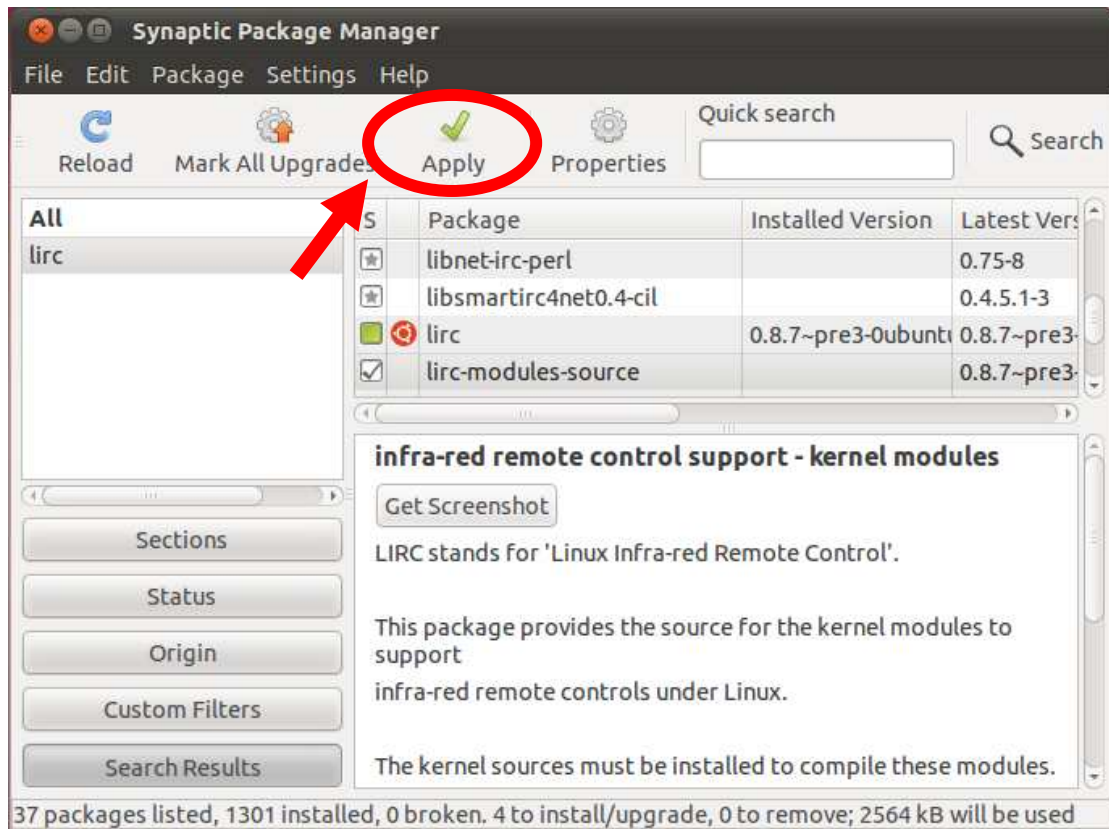
5. Select None for both column.



6. After install lirc package, please install lirc module source code as well.



7. Click Apply to install the source code of lirc module.



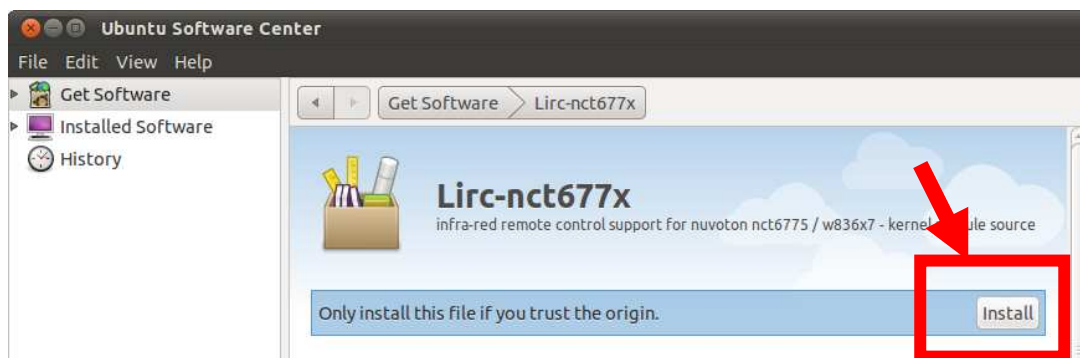
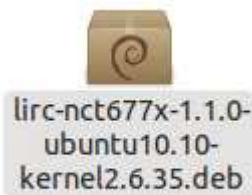
8. Please download the Nuvoton 677 binary and source code package from following link

Nuvoton 677 binary and source code download link:

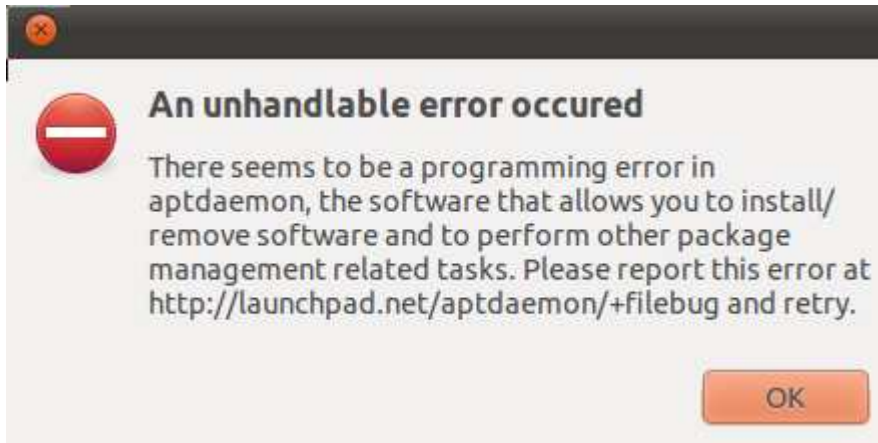
<http://www.asrock.com/Nettop/download.asp?Model=Vision%203D%20Series&o=Linux>

9. Unzip the download file and double click the

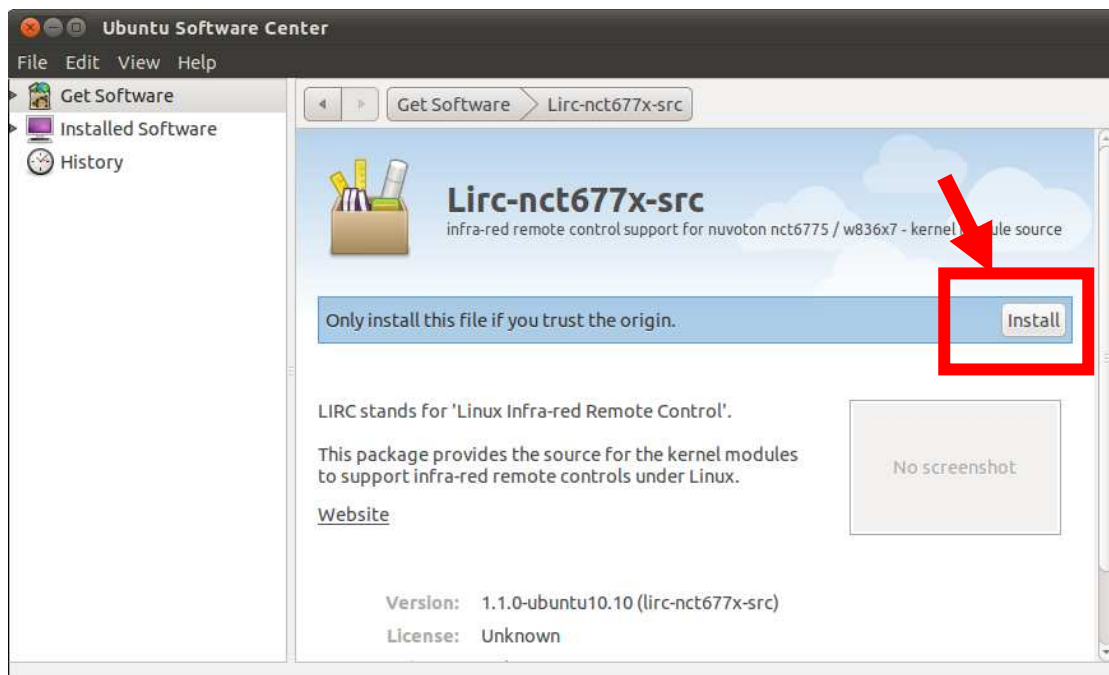
lirc-nct677x-1.1.0-ubuntu10.10-kernel2.6.35.deb to install nct677 binary.



During installation, you may see the error message as below, click ok to sip this error, don't worry, this error will fix by following steps.



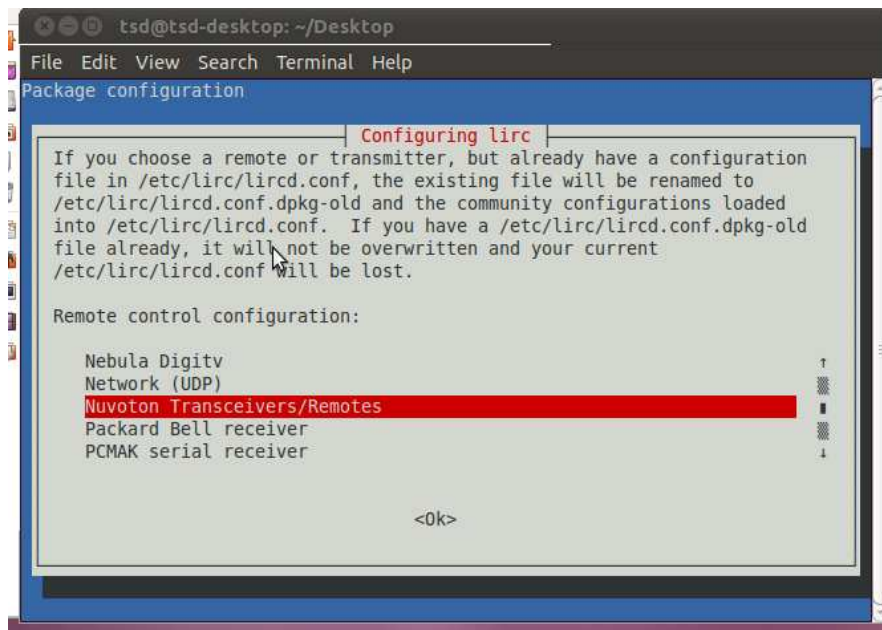
10. Double click the lirc-nct677x-src-1.1.0-ubuntu10.10-kernel2.6.35.deb to install nct677 source.



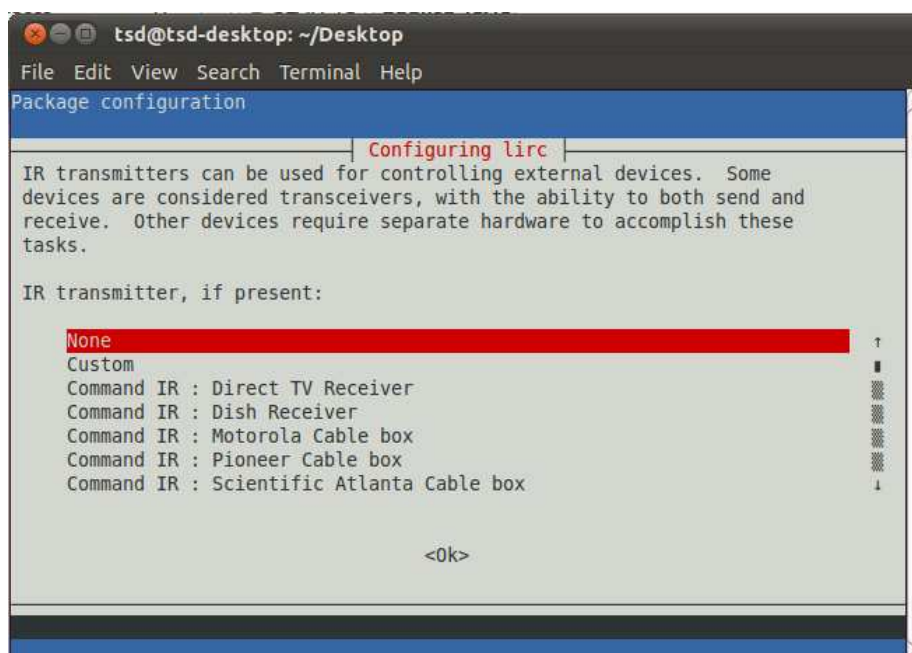
11. Open Terminal and enter following command step by step.

```
cd /usr/src
sudo dkms remove -m lirc -v 0.8.7~pre3 --all
sudo dkms add -m lirc -v 0.8.7~pre3
sudo dkms build -m lirc -v 0.8.7~pre3
sudo dkms install -m lirc -v 0.8.7~pre3 --force
sudo dpkg-reconfigure lirc
```

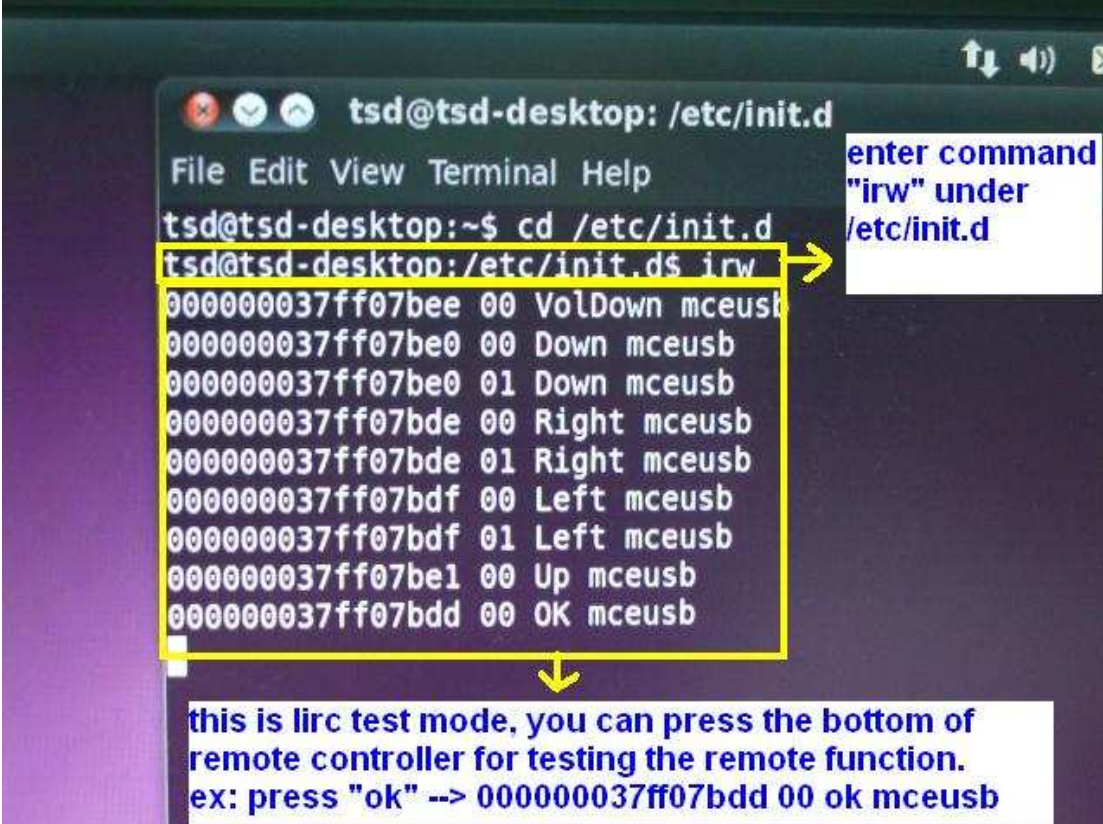
When you see the dialog box as below, choose Nuvoton Trasncerivers/Remotes for Remote control configuration.



12. Select None for IR transmitter.



13. Now, all require drivers have installed, please test the CIR function under terminal, if you can see the responds under terminal, you have install the lirc driver successfully.



The image shows a terminal window titled "tsd@tsd-desktop: /etc/init.d". The terminal content is as follows:

```
tsd@tsd-desktop:~$ cd /etc/init.d
tsd@tsd-desktop:/etc/init.d$ irw
000000037ff07bee 00 VolDown mceusb
000000037ff07be0 00 Down mceusb
000000037ff07be0 01 Down mceusb
000000037ff07bde 00 Right mceusb
000000037ff07bde 01 Right mceusb
000000037ff07bdf 00 Left mceusb
000000037ff07bdf 01 Left mceusb
000000037ff07be1 00 Up mceusb
000000037ff07bdd 00 OK mceusb
```

Annotations in the image include:

- A yellow box highlights the command `irw` and its output.
- A yellow arrow points from the `irw` command to a text box on the right that says "enter command 'irw' under /etc/init.d".
- A yellow arrow points from the bottom of the output list to a text box at the bottom that says "this is lirc test mode, you can press the bottom of remote controller for testing the remote function. ex: press 'ok' --> 000000037ff07bdd 00 ok mceusb".