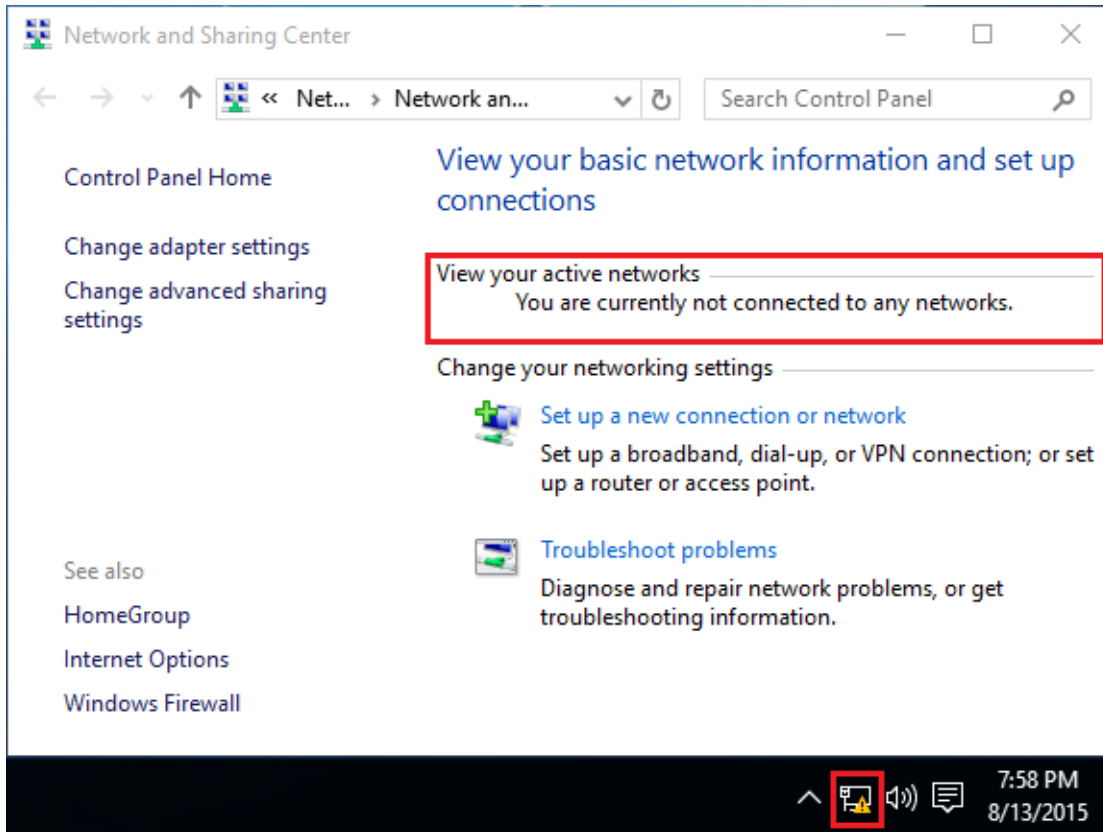


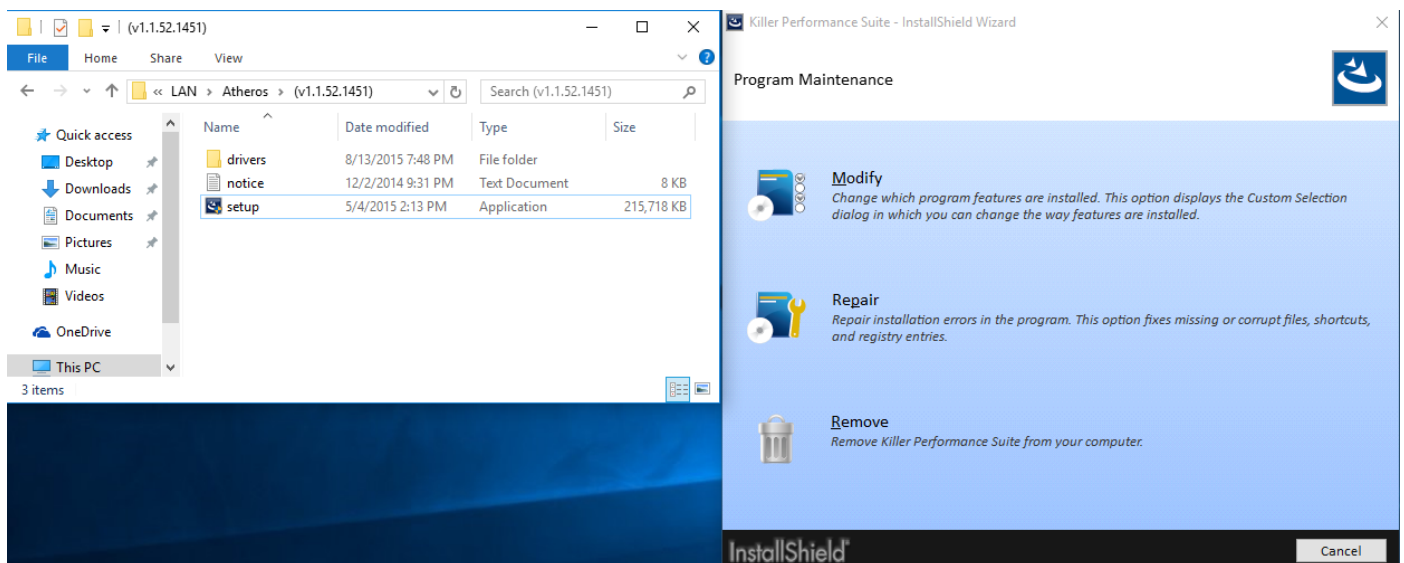


Killer LAN driver update guide

If you update the Killer LAN driver from version 1.1.52.1451 to newer versions on Windows 10 x86/x64, it might cause the LAN driver to malfunction. Please follow the steps below to prevent this problem.



Step 1: Execute the Killer LAN driver 1.1.52.1451 and press [Remove] then restart the system.






InstallShield Wizard Completed

The InstallShield Wizard has successfully uninstalled Killer Performance Suite. Click Finish to exit the wizard.

Killer Performance Suite - InstallShield Wizard ✕

 The installer must restart your system before configuration of Killer Performance Suite can continue. Click Yes to restart now or No if you plan to restart later.

Yes No


Step 2: Install the new Killer LAN driver or newer and then restart the system.



InstallShield Wizard Completed

The InstallShield Wizard has successfully installed Killer Performance Suite. Click Finish to exit the wizard.

Killer Performance Suite - InstallShield Wizard ✕

 The installer must restart your system before configuration of Killer Performance Suite can continue. Click Yes to restart now or No if you plan to restart later.

Yes No