

# Intel Smart Connect Setup Guide

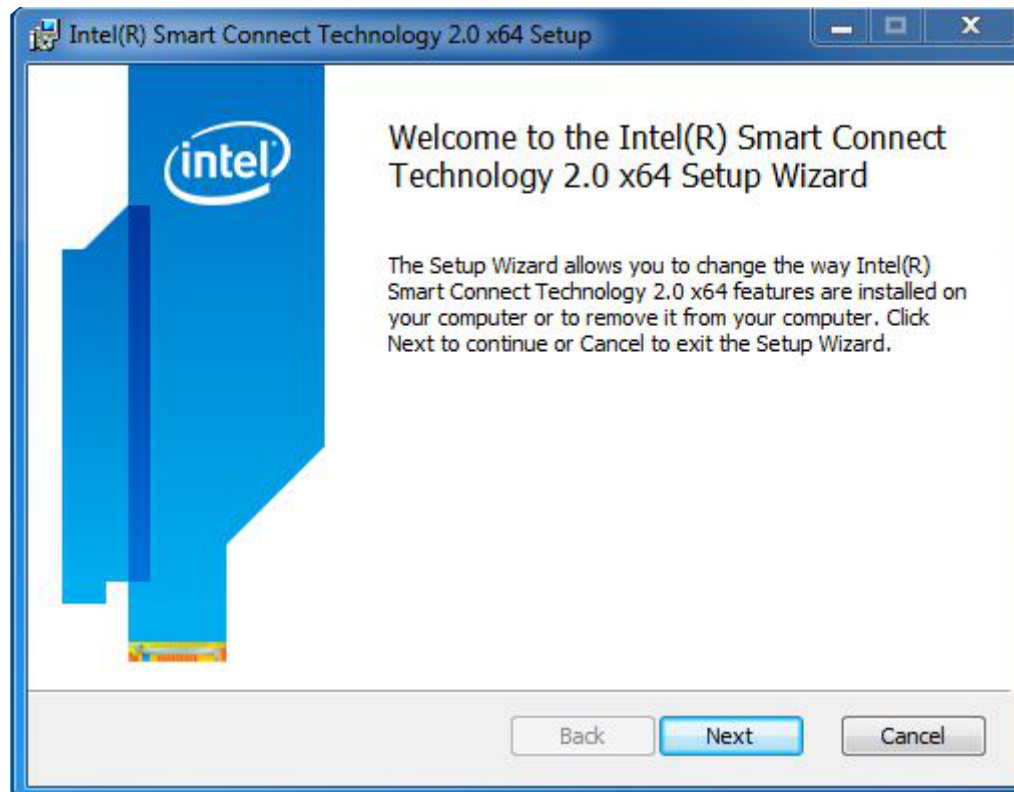
## System requirements

1. Confirm whether your motherboard supports this feature. For the H61 series motherboards, please refer to the webpage below (Update the motherboard's BIOS to the latest version): <http://www.asrock.com/news/events/2012H61/>
2. Windows 7 32bit or 64bit operating system.
3. Set the SATA mode to AHCI. If Windows 7 is already installed under IDE mode, directly changing the SATA mode to AHCI may cause Windows 7 to crash while booting, please refer [here](#) to switch to AHCI mode.
4. Download ASRock Smart Connect utility on ASRock's official website. For example, 1.0.6 version: [http://download.asrock.com/utility/Intel/SmartConnect\(v1.0.6\).zip](http://download.asrock.com/utility/Intel/SmartConnect(v1.0.6).zip)
5. Download Intel Smart Connect driver on ASRock's official website. For example, 2.0.1083.0 version: [http://download.asrock.com/drivers/Intel/SATA/SmartConnect\\_Win7-64\\_Win7\(v2.0.1083.0\).zip](http://download.asrock.com/drivers/Intel/SATA/SmartConnect_Win7-64_Win7(v2.0.1083.0).zip)

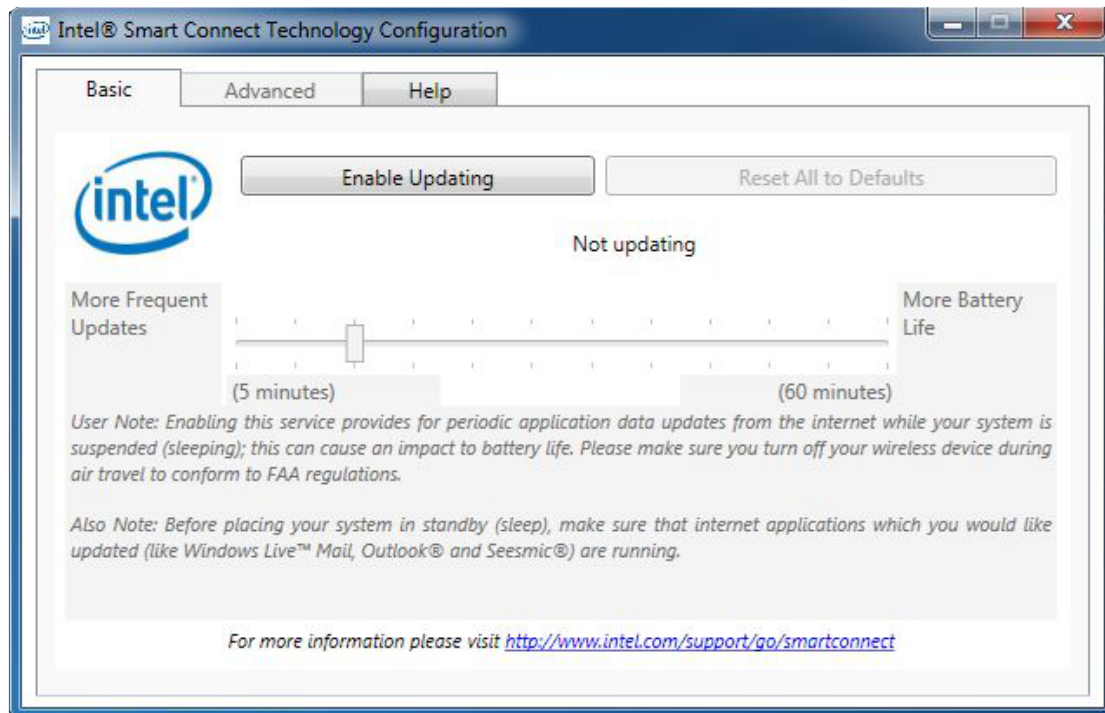
## Setup

### Installing and configuring Intel Smart Connect driver

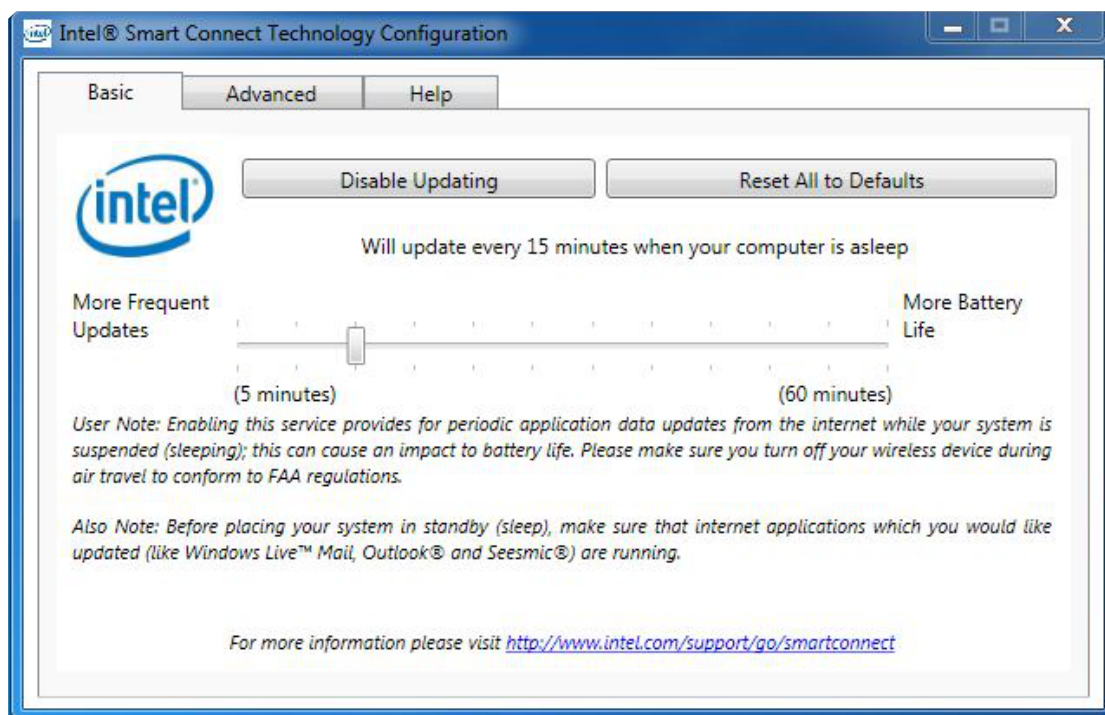
1. Install **Intel Smart Connect driver**. Follow the instructions to complete the installation.



- Restart your computer when prompted after the installation.
- Execute **Intel Smart Connect Technology Configuration** from Windows **Start -> All Programs -> Intel** and click the **Enable Updating** button.

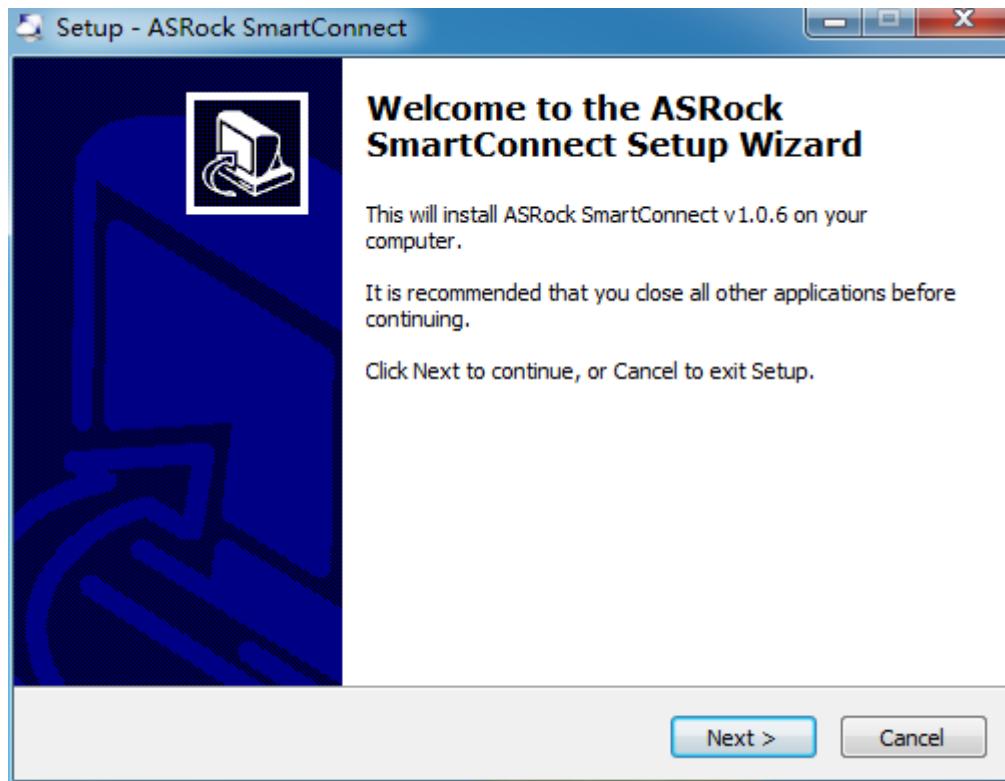


- Drag the icon to configure the time. When the system is in sleep state, it will connect to the internet and refresh updates in intervals based on your settings.



## Installing and configuring ASRock Smart Connect utility

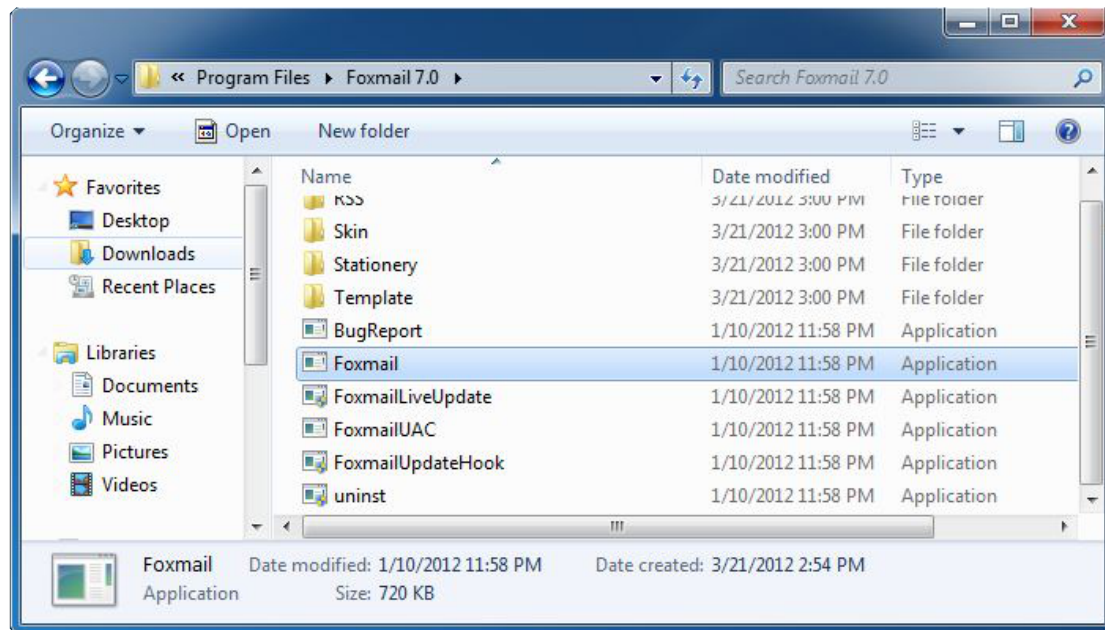
1. Run **ASRock Smart Connect Setup**. Follow the instructions to complete the installation.



2. Execute **ASRock Smart Connect** from your desktop or go to Windows **Start -> All Programs -> ASRock Utility**.



3. Click the **Add** button. Take Foxmail as an example, add Foxmail to the Application list.



4. Select Foxmail from the **Application List**, then click the arrow pointing right to add this application to the **Smart Connect List**.

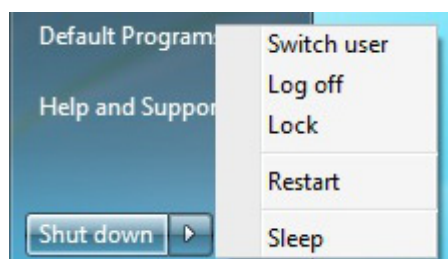


5. Click **Apply** to enable Smart Connect.



## Experiencing Smart Connect

1. Keep the applications which you wish to connect to the internet and receive updates while the system is in sleep state running. Foxmail for instance, keep Foxmail running.
2. Click on Windows **Start** -> the arrow next to **Shut down**, and click on **Sleep**.



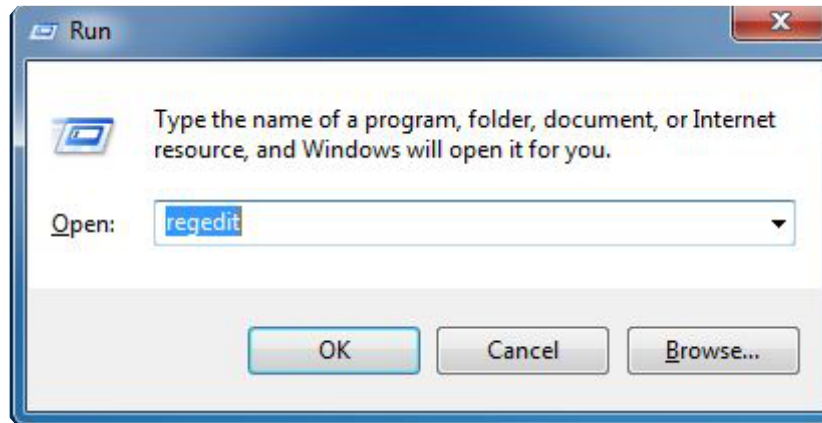
3. Windows system will enter sleep state.
4. The system will wake up from sleep state periodically, and then starts to update Foxmail. The screen will not display anything so the computer can maintain minimum power usage. Afterwards, the system will automatically return to sleep state again.
5. Upon waking up the system, you will find the new mail that were sent to you during sleep state are already updated and ready to be read in Foxmail.



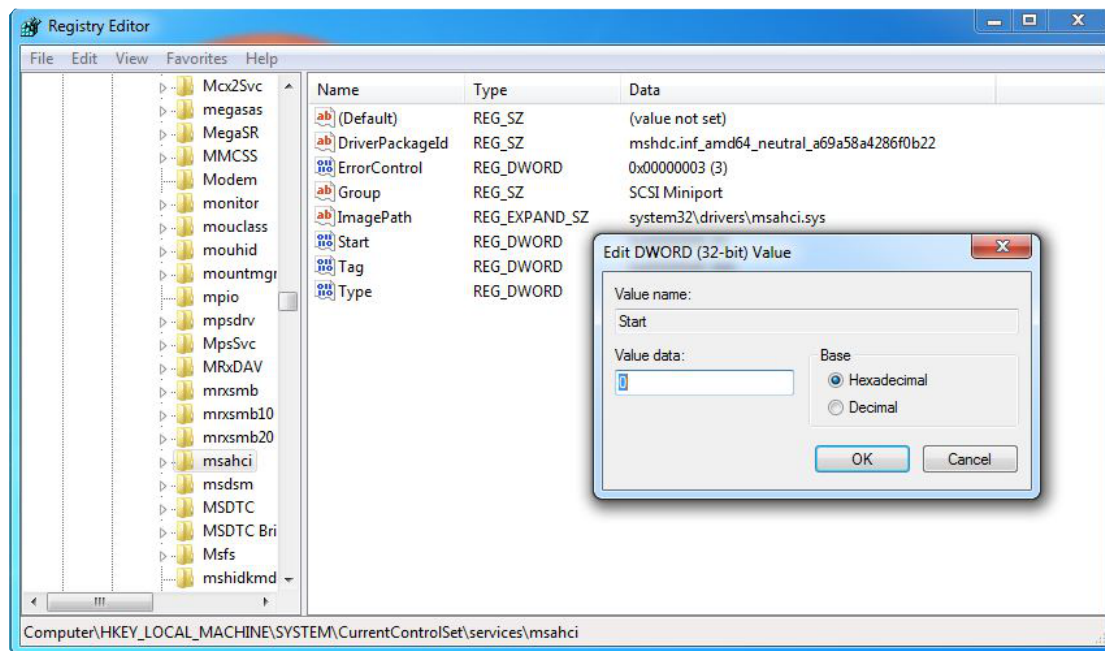
## Appendix: How to turn an IDE mode Windows 7 into AHCI mode

Note: There are certain risks. Please backup any important data before operating to avoid loss.

1. Press **Win + R** simultaneously in Windows 7, type **Regedit** into the word box then click **OK**.



2. Enter into **HKEY\_LOCAL\_MACHINE\SYSTEM\CurrentControlSet\services\msahci** in Windows Registry Editor. Double click on the value **Start** and change the value from **3** into **0**. Click on **OK**.



3. Exit the Registry Editor window and restart the computer.

4. Press **F2** to enter BIOS, then go to **Advanced** -> **Storage Configuration** and change **SATA Mode** to **AHCI**. Press **F10** to save changes and exit.

5. Enter Windows 7. Windows will discover the new device and install AHCI drivers automatically.