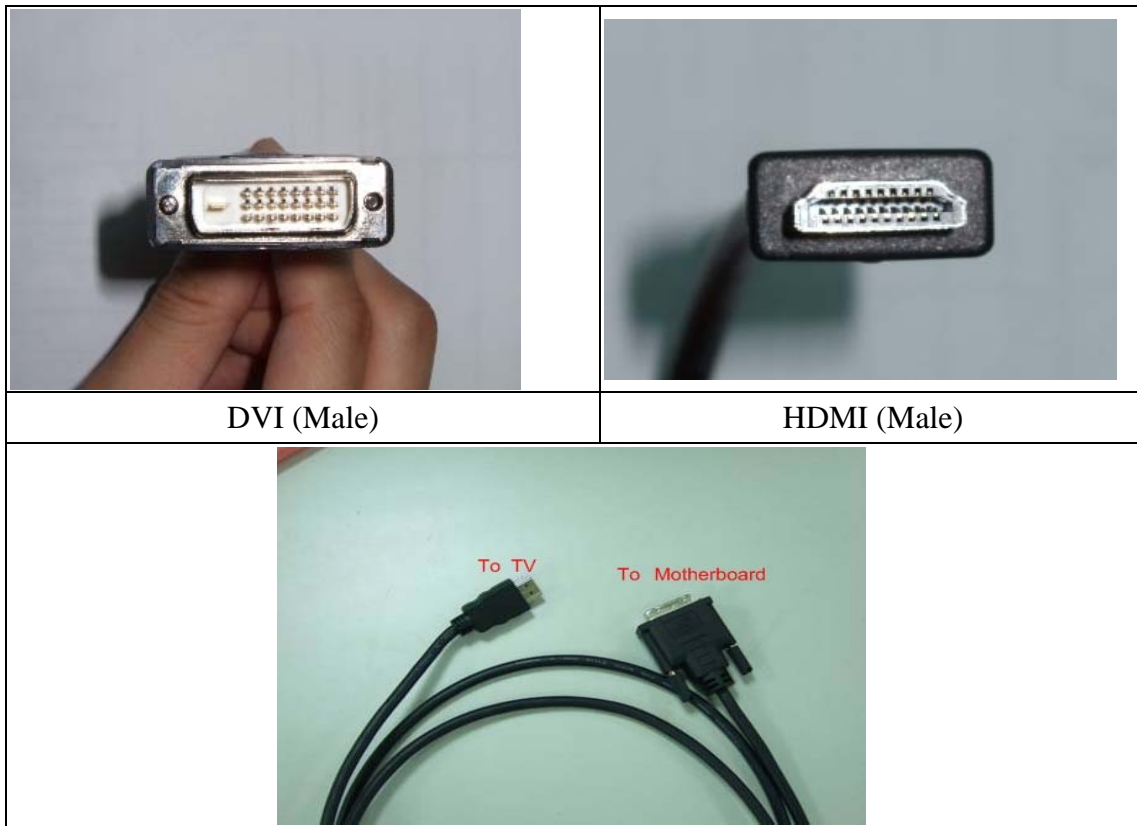


Technical Reference - Q&A

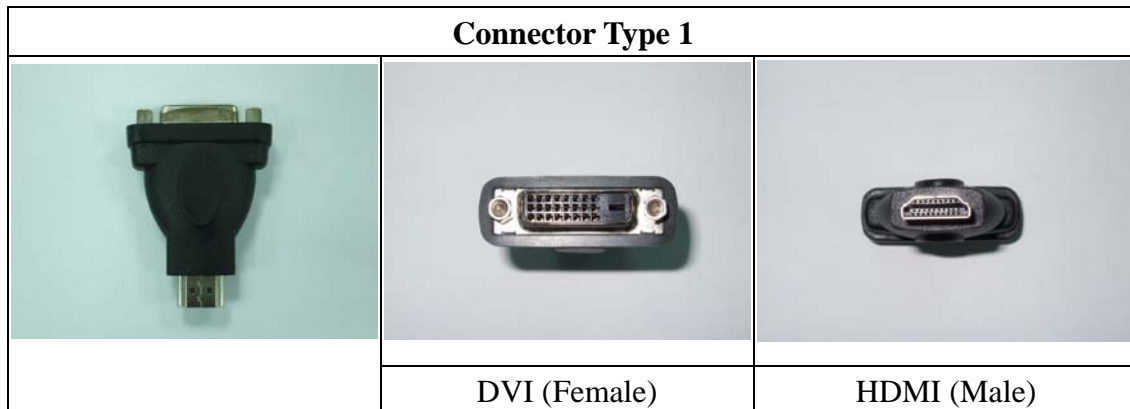
1. Q: Does ALiveNF7G-HD720P/ALiveNF7G-HDready support HDMI output?

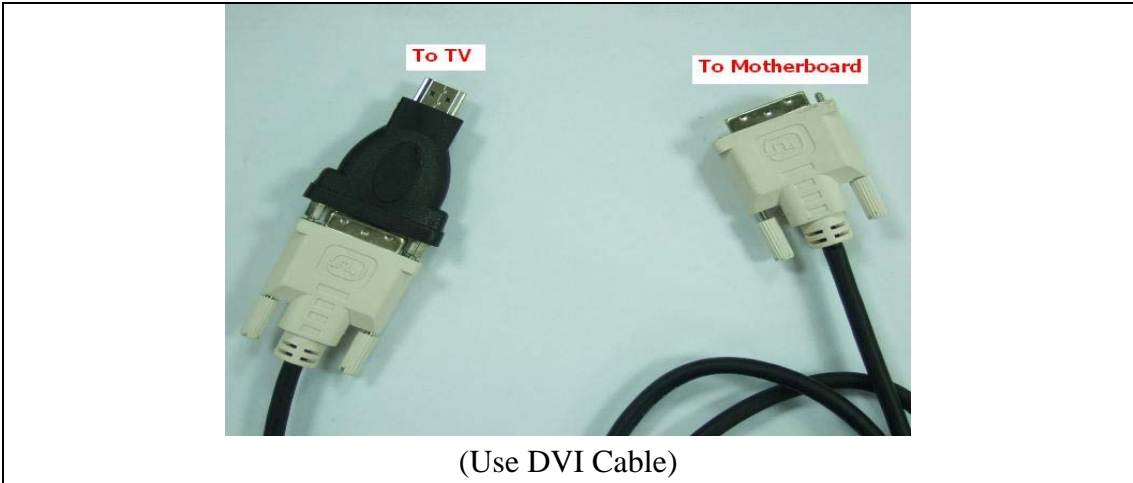
A: Yes, ALiveNF7G-HD720P/ALiveNF7G-HDready supports HDMI output.
However, a DVI to HDMI cable or adapter is required.




DVI to HDMI cable




DVI to HDMI Connector





Connector Type 2		
		
	DVI (Male)	HDMI (Female)



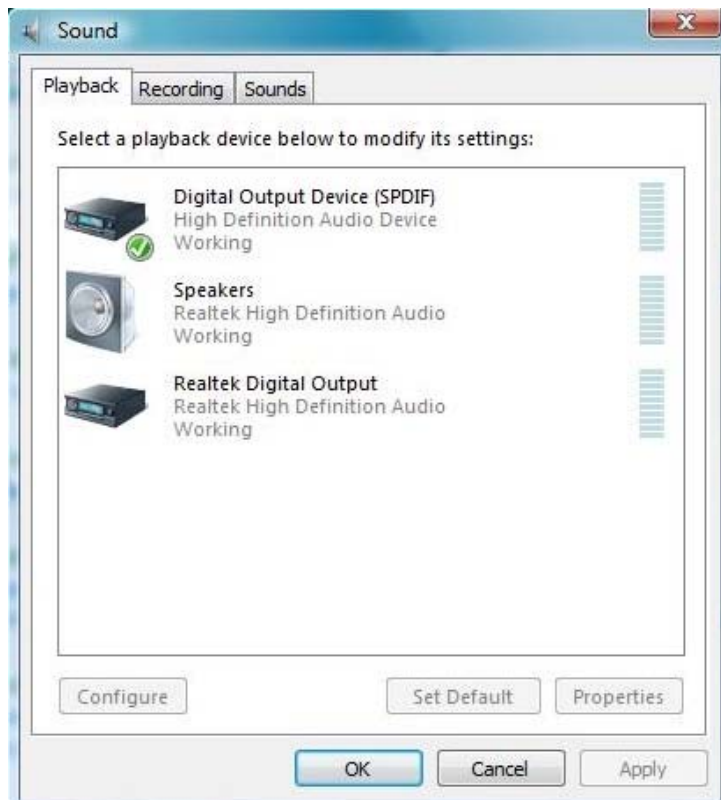
(Use HDMI Cable)

Besides the DVI to HDMI cable/adaptor, please also do the following settings in BIOS SETUP and Windows Vista/Vista 64-bit:

1. In BIOS SETUP, go to “Advanced”-----→”Chipset Configuration”, and set the option “Onboard HDMI HD Audio” to [Auto].



2. Under Windows Vista/Vista 64-bit, go to “Sound” settings and select the Digital Output Device (SPDIF) as a playback device.



You can find more detail information in user manual page 13:

* The DVI-D port for the chipset adopted on this motherboard can support DVI/HDCP and HDMI format signal. You may use the DVI to HDMI adapter to convert this DVI-D port to HDMI interface. Please follow below steps to enable HDMI audio under Windows® Vista™ / Vista™ 64-bit.

- A. Click “Start” button, select “Settings”, and then click “Control Panel”.
- B. Click “Hardware and Sound”, and click “Sound”.
- C. Change the default setting “Speaker” to “Digital Output Device (HDMI)”.
- D. Click “OK” to finish the setting.

Since DVI to HDMI adapter is not bundled with our product, please refer to the adapter vendor for further information.

2. Q: I use an external USB HDD on ALiveNF7G-HD720P/ALiveNF7G-HDready. I feel that the speed of USB is slower. Is there any method to improve it?

A: Please kindly refer to below steps for try.

1. Open Notepad and type following registry entry.

```
[HKEY_LOCAL_MACHINE\SYSTEM\CurrentControlSet\Services\usb]
"USBBIOSx"=dword:00000000
```

2. Save file as "USB.reg".
3. Double click this file to add the information to the registry.
4. Reboot system.