

## Technical Reference - Q&A

1. Q: I'm using the Core 2 Duo E6XXX CPU and DDRII 533/667 RAM on 775Dual-VSTA motherboard. But the system is very unstable. Sometimes it gets blue screen or fail when installing the Windows XP or some applications. How do I fix this problem?

A: Please refer to following steps to fix this problem.

1. Please set the "DRAM Frequency" as "[333MHz (DDRII 667)]" in BIOS setup if you use DDRII 667 RAM. (BIOS/ Advanced/ Chipset Configuration/ DRAM Frequency)
2. Please enable the "Flexibility Option" in BIOS setup if you use DDRII 533 RAM. (BIOS/ Advanced/ Chipset Configuration/ Flexibility Option)
3. If the problem still remains, please update the BIOS to P1.80 or later version.  
<http://www.asrock.com/mb/download.asp?Model=775Dual-VSTA#bios>

2. Q: My system is based on 775Dual-VSTA/ ALiveSATA2-GLAN/ AM2V890-VSTA with Windows XP/ Windows 2000 operating system. After updating to the latest BIOS, I found two issues.

1. I can't find the "HD Audio Driver and Application" link in the menu of support CD.
2. There is a yellow exclamation mark in Device Manager.  
What could I do?

A: 1. If your CD is IVD12/ IVD12b (775Dual-VSTA), AV890-10 (ALiveSATA2-GLAN) or AV31/ AV31b (AM2V890-VSTA), you will get the issue.

Please execute the "Setup.exe" file from following directory of support CD.

775Dual-VISTA-> IVD12

[CD\Drivers\Audio\REALTEK\MCE\\_XP\\_2K \(R1.36\)\](#)

775Dual-VISTA->IVD12b

[CD\Drivers\Audio/ REALTEK\MCE\\_XP\\_2K \(R1.41\)\](#)

ALiveSATA2-GLAN -> AV890-10

[CD\Drivers\Audio\REALTEK\MCE\\_XP\\_2K \(R1.39\)\](#)

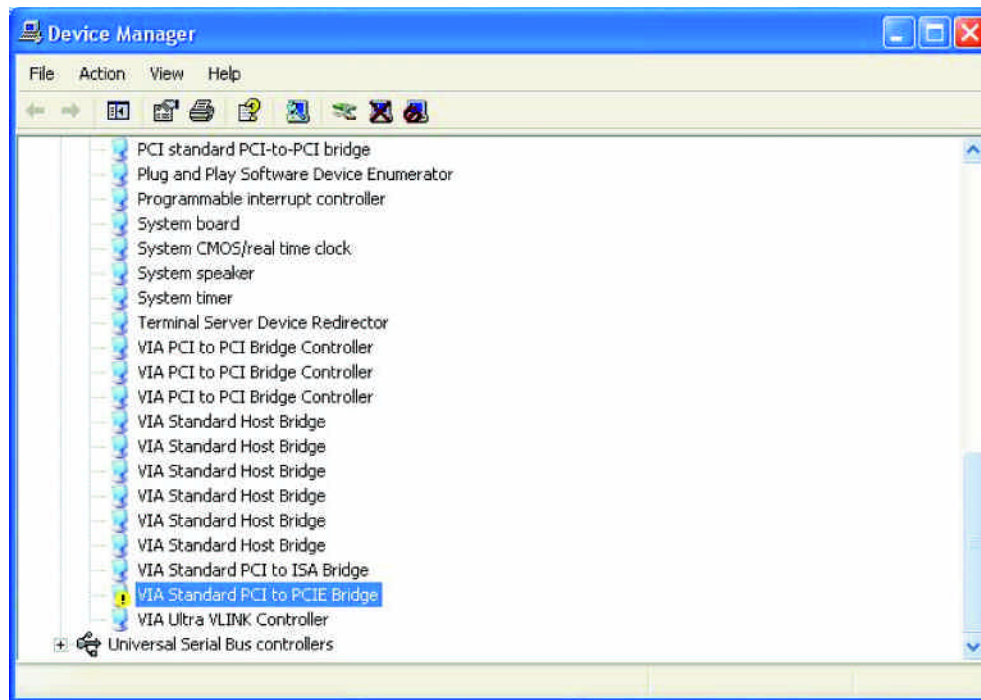
AM2V890-VSTA -> AV31/ AV31b

[CD\Drivers\Audio\REALTEK\MCE\\_XP\\_2K \(R1.39\)\](#)

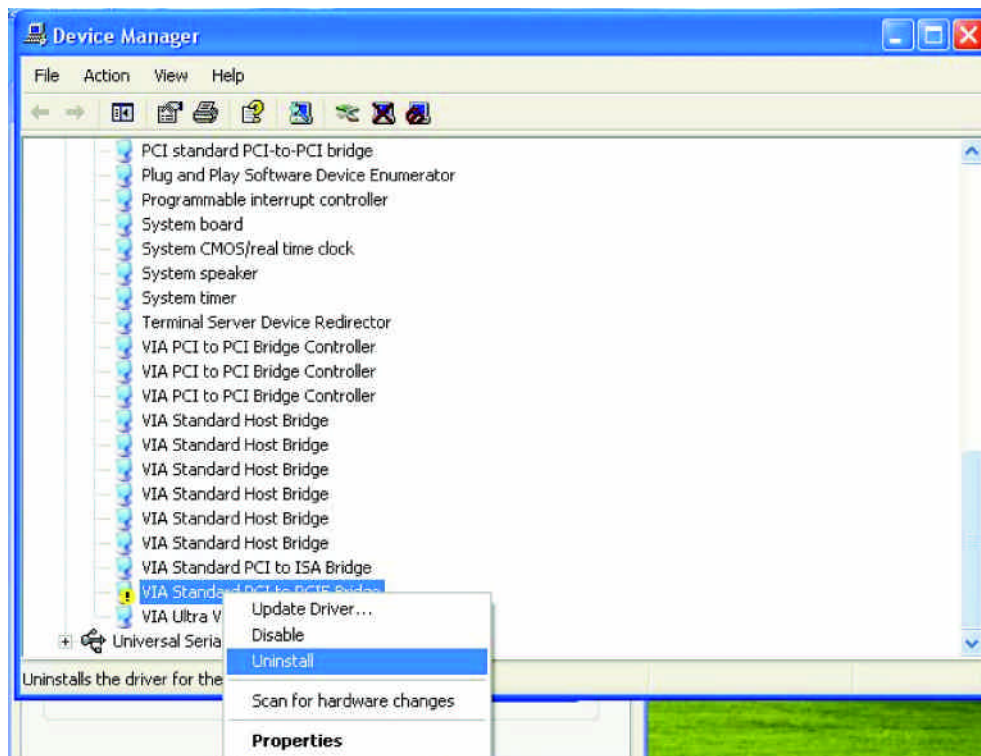
2: The yellow exclamation mark in Device Manager is unnecessary. It will not affect the system at all. Please follow below steps to remove it.

1. Right-click "My Computer" on your desktop, and click "Properties".

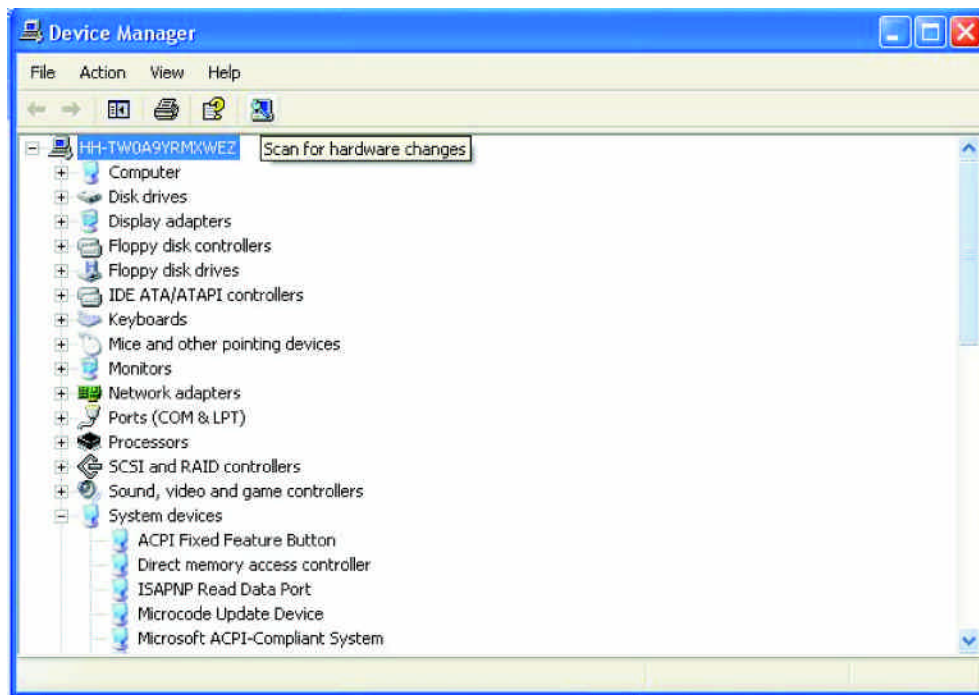
2. Select "Hardware", and click "Device Manager".
3. In "Device Manager", double-click the option "System Devices". You will find "VIA Standard PCI to PCIE Bridge" item with a yellow exclamation mark.



4. Right-click "VIA Standard PCI to PCIE Bridge", and select "Uninstall". Confirm your choice by clicking "OK".



5. After a few seconds, click "Scan for hardware changes" icon on the top.



3. Q: I'm using SATA devices (Hard Drives or Optical Drives) on AM2XLI-eSATA2 (939SLI-eSATA2/939SLI32-eSATA2), but my system takes long time to boot. How do I solve it?

A: Please make sure to connect your SATA Devices on the Master ports (Red or Orange) first and then the Slave ports.

	Primary Channel	Secondary Channel
Master	SATAII_RED	SATAII_ORANGE
Slave	SATAII_BLACK	SATAII_BLUE