

P67 Pro3

Intel® P67 Chipset

ASRock
www.asrock.com



Detail Specification

Platform	- ATX Form Factor: 12.0-in x 9.6-in, 30.5 cm x 24.4 cm - All Solid Capacitor design (100% Japan-made high-quality Conductive Polymer Capacitors)
CPU	- Supports 2 nd Generation Intel® Core™ i7 / i5 / i3 in LGA1155 Package - Advanced V8 + 2 Power Phase Design - Supports Intel® Turbo Boost 2.0 Technology - Supports Intel® K-Series unlocked CPU - Supports Hyper-Threading Technology
Chipset	- Intel® P67
Memory	- Dual Channel DDR3 memory technology - 4 x DDR3 DIMM slots - Supports DDR3 2133(OC)/1866(OC)/1600/1333/1066 non-ECC, un-buffered memory - Max. capacity of system memory: 32GB - Supports Intel® Extreme Memory Profile (XMP)
Expansion Slot	- 1 x PCI Express 2.0 x16 slot (blue @ x16 mode) - 3 x PCI Express 2.0 x1 slots - 3 x PCI slots
Audio	- 7.1 CH HD Audio with Content Protection (Realtek ALC892 Audio Codec) - Premium Blu-ray audio support
LAN	- PCIe x1 Gigabit LAN 10/100/1000 Mb/s - Realtek RTL8111E - Supports Wake-On-LAN - Supports LAN Cable Detection - Supports Energy Efficient Ethernet 802.3az
Rear Panel I/O	I/O Panel - 1 x PS/2 Mouse Port - 1 x PS/2 Keyboard Port - 1 x Coaxial SPDIF Out Port - 1 x Optical SPDIF Out Port - 6 x Ready-to-Use USB 2.0 Ports - 1 x eSATA3 Connector - 2 x Ready-to-Use USB 3.0 Ports - 1 x RJ-45 LAN Port with LED (ACT/LINK LED and SPEED LED) - 1 x Clear CMOS Switch with LED - HD Audio Jack: Side Speaker / Rear Speaker / Central / Bass / Line in / Front Speaker / Microphone
SATA3	- 2 x SATA3 6.0 Gb/s connectors, support RAID (RAID 0, RAID 1, RAID 10, RAID 5 and Intel® Rapid Storage), NCQ, AHCI and "Hot Plug" functions (SATA3_1 connector is shared with eSATA3 port)
USB 3.0	- 2 x USB 3.0 ports by Etron EJ168A, support USB 1.0/2.0/3.0 up to 5Gb/s
Connector	- 4 x SATA2 3.0 Gb/s connectors, support RAID (RAID 0, RAID 1, RAID 10, RAID 5 and Intel® Rapid Storage), NCQ, AHCI and Hot Plug functions - 2 x SATA3 6.0 Gb/s connectors - 1 x Floppy connector - 1 x IR header - 1 x COM port header - 1 x HDMI SPDIF header - 1 x Power LED header - CPU/Chassis/Power FAN connector - 24 pin ATX power connector - 8 pin 12V power connector - Front panel audio connector - 3 x USB 2.0 headers (support 6 USB 2.0 ports) - 1 x Dr. Debug with LED
Smart Switch	- 1 x Power Switch with LED - 1 x Reset Switch with LED - 1 x Clear CMOS Switch with LED
BIOS Feature	- 64Mb AMI UEFI Legal BIOS with GUI support - Supports "Plug and Play" - ACPI 1.1 Compliance Wake Up Events - Supports jumperfree - SMBIOS 2.3.1 Support - DRAM, PCH, CPU PLL, VTT, VCCSA Voltage Multi-adjustment
Support CD	- Drivers, Utilities, AntiVirus Software (Trial Version), ASRock Software Suite (CyberLink DVD Suite - OEM and Trial; Creative Sound Blaster X-Fi MB - Trial)
Unique Feature	- ASRock Extreme Tuning Utility (AXTU) - Instant Boot - ASRock Instant Flash - ASRock AIWI - ASRock APP Charger - SmartView - Hybrid Booster: - CPU Frequency Stepless Control - ASRock U-COP - Boot Failure Guard (B.F.G.) - Combo Cooler Option (C.C.O.) - Good Night LED
Hardware Monitor	- CPU Temperature Sensing - Chassis Temperature Sensing - CPU/Chassis/Power Fan Tachometer - CPU/Chassis Quiet Fan (Allow Chassis Fan Speed Auto-Adjust by CPU or MB Temperature) - CPU/Chassis Fan Multi-Speed Control - Voltage Monitoring: +12V, +5V, +3.3V, CPU Vcore
OS	- Microsoft® Windows® 7 / 7 64-bit / Vista™ / Vista™ 64-bit / XP / XP 64-bit compliant
Certifications	- FCC, CE, WHQL - ErP/EuP Ready (ErP/EuP ready power supply is required)
Accessories	- Quick Installation Guide, Support CD, I/O Shield - 2 x SATA Data Cables (Optional)

Product Brief

- ASRock DuraCap (2.5 x longer life time), 100% Japan-made high-quality Conductive Polymer Capacitors
- Supports Intel® K-Series unlocked CPU
- Supports Dual Channel DDR3 2133(OC)
- 2 x USB 3.0 ports, 2 x SATA3 connectors, 1 x eSATA3 connector
- Dr. Debug, Smart Swith Design: Power/Reset/Clear CMOS Switch with LED
- Supports ASRock Extreme Tuning Utility (AXTU), Instant Boot, Instant Flash, Good Night LED, Multi-Fan Speed Control, AIWI, APP Charger, SmartView
- Combo Cooler Option (C.C.O.)
- 7.1 CH HD Audio with Content Protection (Realtek ALC892 Audio Codec), Premium Blu-ray audio support
- ErP/EuP Ready
- Free Software : CyberLink DVD Suite - OEM and Trial; Creative Sound Blaster X-Fi MB - Trial

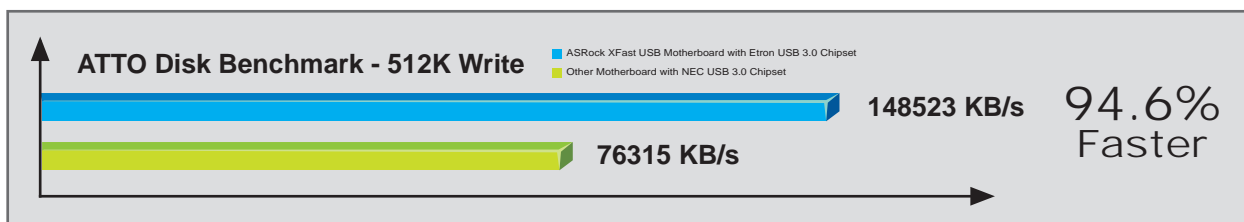
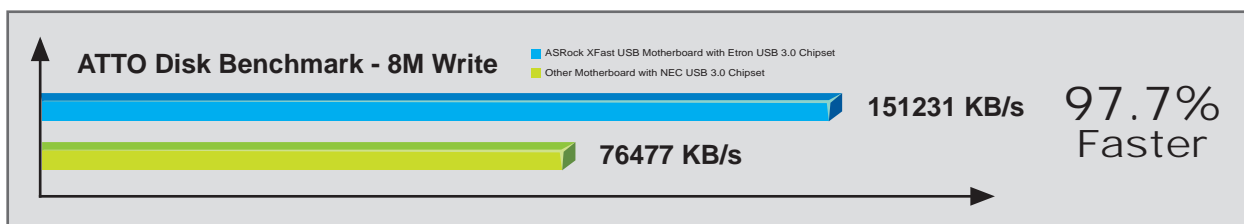
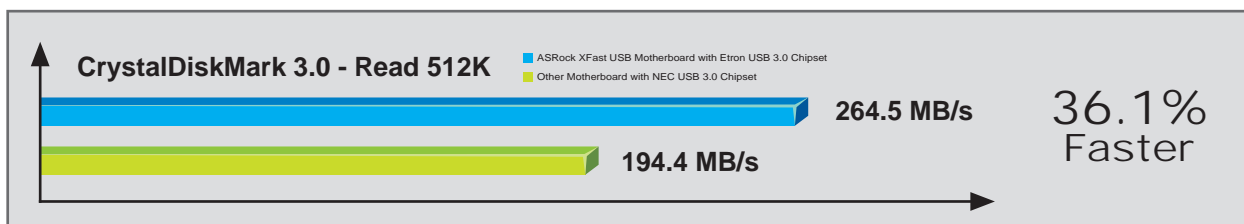
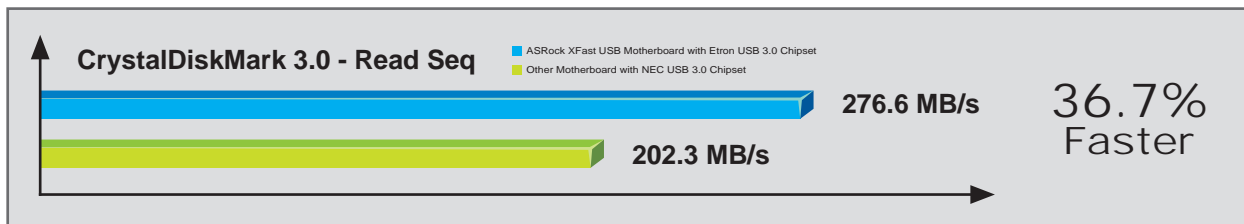
The specification is subject to change without notice. The brand and product names are trademarks of their respective companies. Any configuration other than original product specification is not guaranteed.

ASRock XFast USB Technology - Faster Than Your Imagination!



(The rear I/O photo is example only)

ASRock XFast USB Technology redefines the new standard in high performance computing. Proving once again to be the pioneer in motherboard industry, ASRock XFast USB Series Motherboards integrate with the latest XFast USB Technology which delivers the world's fastest USB data transfer speed. According to the below graph, it shows that the ASRock XFast USB technology can even boost USB 3.0 performance up to 97.7%!



P67 Pro3

Intel® P67 Chipset

ASRock
www.asrock.com



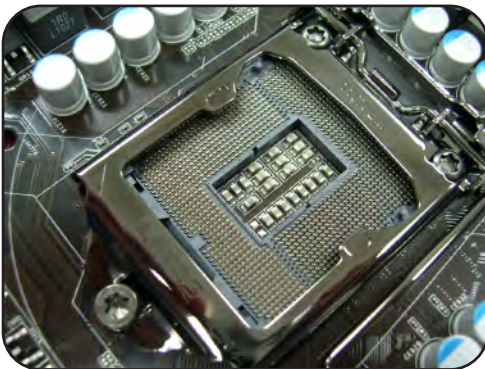
C.C.O.

Combo Cooler Option

C.C.O. provides the flexible option to adopt three different CPU cooler types, Socket LGA 775*, LGA 1155 and LGA 1156**

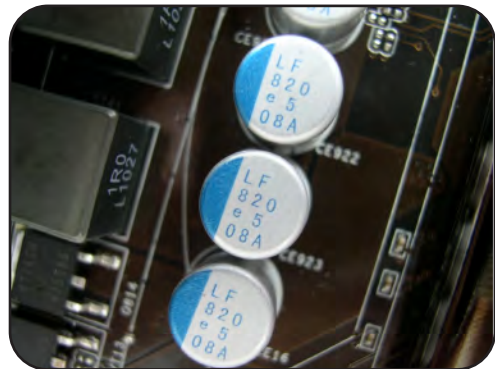
*C.C.O. may not be compatible with all Socket 775 CPU coolers.
**O is for Socket 1155 and Socket 1156 CPU cooler.

Support Intel® K-Series unlocked CPU



DuraCap

100% Japan-made high-quality
Conductive Polymer Capacitors



AXTU – The All-in-1 Tuning Software



ASRock Extreme Tuning Utility (AXTU) is an all-in-one software to fine-tune different features in an user-friendly interface, which includes Hardware Monitor, Fan Control, Overclocking, OC DNA and IES. In Hardware Monitor, it shows the major readings of your system. In Fan Control, it shows the fan speed and temperature for you to adjust. In Overclocking, you are allowed to adjust the CPU frequency, ratio and some voltages for optimal system performance. In OC DNA, you can save your OC settings as a profile and share with your friends. Your friends then can load the OC profile to their own system to get the same OC settings. In IES (Intelligent Energy Saver), the voltage regulator can reduce the number of output phases to improve efficiency when the CPU cores are idle without sacrificing computing performance.

UEFI – The Revolutionary BIOS Interface



*Windows Vista-64bit or Windows 7-64bit OS is required

Unified Extensible Firmware Interface (UEFI) is a revolutionary BIOS utility which offers tweak-friendly options in an advanced viewing interface. Compared with traditional BIOS design, the latest UEFI utility provides lots improved functions. The major features of UEFI include:

1. Graphical Visual Experience – UEFI provides an improved visual interface with colorful icons and makes your computing environment more versatile to replace the traditional dull BIOS page.
2. Mouse Enabling – Besides keyboard control, you can freely use mouse to select your ideal settings in UEFI as well.
3. Support bootable HDD over than 2TB – UEFI breaks the limitation of 2TB bootable HDD on traditional BIOS. With UEFI, you can enjoy the bootable HDD size over than 2TB!*



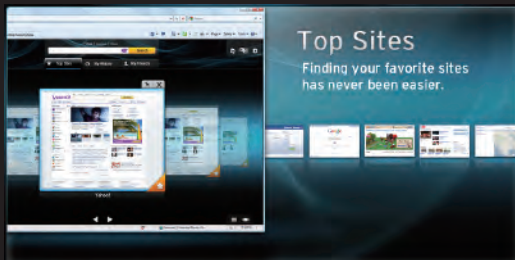
SmartView

Experience the Brand New Browser Now

SmartView is the smart start page for IE that combines your most visited web sites, your history, your Facebook friends and your real-time newsfeed into an enhanced view for a more personal Internet experience. ASRock motherboards are exclusively equipped with the SmartView utility that helps you keep in touch with friends on-the-go.

The Major Features of SmartView

Visual thumbnail images which categorize and rank your frequently visited websites, as well as provide a chronological view of your browser history.



A persistent, real-time Facebook newsfeed located within the Internet Explorer sidebar.



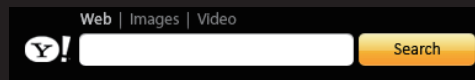
A "Friend Wall" that conveniently alphabetizes your Facebook friends by profile photo, allowing immediate access to your friends' profile pages.



A "share this" button which allows you to instantly and immediately share webpage posts and links to your friends' Facebook pages.



A persistent search box from best-in-class search engines such as Google, Yahoo, Baidu (China only) and Yandex (Russia only).



Two mode options that allow you to choose your favored view style.



Flow Mode



Flow Mode

System Requirements

OS version: Win7 32/64 bit, Vista 32/64 bit

Browser version: IE8



CyberLink Power2Go 6.1 LE OEM

Power2Go 6 lets you burn and backup videos, photos, music and data onto Blu-ray Discs and DVDs.

CyberLink MediaShow 4.1 SE OEM

Photo and video management software MediaShow edits videos and photos instantly, creates slideshow, and allows publishing directly to YouTube and Flickr.

CyberLink PowerDVD 8.0 DTS Trial

World-renowned PowerDVD 8 DTS delivers outstanding DVD movie playback quality on your PC.

CyberLink PowerDirector 8.0 Trial

PowerDirector - Video Editing software – edits high-definition videos including AVCHD, allows output to PSP iPod and Blu-ray Disc.

CyberLink PowerBackup 2.5 Trial

PowerBackup backups valuable data on your PC.

Creative Sound Blaster X-Fi MB Trial

The Sound Blaster X-Fi MB solution provides premium audio quality, effects and features for PC systems equipped with onboard audio.

For gamers, the EAX® ADVANCED HD 4.0, with its state-of-the-art Multi-Environment rendering and reverb modelling, delivers a much more realistic and immersive 3D gaming experience than your motherboard audio ever will.