

E350M1/USB3

AMD Dual-Core E350 APU + A50M Chipset

ASRock
www.asrock.com



Detail Specification <<<

Platform	- Mini-ITX Form Factor: 6.7-in x 6.7-in, 17.0 cm x 17.0 cm - All Solid Capacitor design (100% Japan-made high-quality Conductive Polymer Capacitors)
CPU	- AMD Dual-Core Zacate E350 APU - Supports AMD's Cool 'n' Quiet Technology - UMI 2.5 GT/s
Chipset	- AMD A50M Chipset
Memory	- 2 x DDR3 DIMM slots - Supports DDR3 1066/800 non-ECC, un-buffered memory - Max. capacity of system memory: 16GB
Expansion Slot	- 1 x PCI Express 2.0 x16 slot (blue @ x4 mode)
Graphics	- Integrated AMD Radeon HD 6310 graphics - DX11 class iGPU, Pixel Shader 5.0 - Max. shared memory 512MB - Three VGA Output options: D-Sub, DVI-D and HDMI - Supports HDMI Technology with max. resolution up to 1920x1200 (1080P) - Supports DVI with max. resolution up to 1920x1200 @ 75Hz - Supports D-Sub with max. resolution up to 2048x1536 @ 85Hz - Supports HDCP function with DVI and HDMI ports - Supports Full HD 1080p Blu-ray (BD) / HD-DVD playback with DVI and HDMI ports
Audio	- 7.1 CH HD Audio with Content Protection (Realtek ALC892 Audio Codec) - Premium Blu-ray audio support
LAN	- PCIE x1 Gigabit LAN 10/100/1000 Mb/s - Realtek RTL8111E - Supports Wake-On-LAN - Supports LAN Cable Detection - Supports Energy Efficient Ethernet 802.3az
Rear Panel I/O	I/O Panel - 1 x PS/2 Keyboard/Mouse Port - 1 x VGA/D-Sub Port - 1 x VGA/DVI-D Port - 1 x HDMI Port - 1 x Optical SPDIF Out Port - 4 x Ready-to-Use USB 2.0 Ports - 1 x eSATA3 Connector - 2 x Ready-to-Use USB 3.0 Ports - 1 x RJ-45 LAN Port with LED (ACT/LINK LED and SPEED LED) - HD Audio Jack: Rear Speaker / Central / Bass / Line in / Front Speaker / Microphone
SATA3	- 4 x SATA3 6.0 Gb/s connectors, support NCQ, AHCI and Hot Plug functions
USB 3.0	- 2 x USB 3.0 ports by Etron E1168A, support USB 1.0/2.0/3.0 up to 5Gb/s
Connector	- 4 x SATA3 6.0 Gb/s connectors - 1 x CIR header - 1 x COM port header - CPU/Chassis FAN connector - 24 pin ATX power connector - Front panel audio connector - 2 x USB 2.0 headers (support 4 USB 2.0 ports)
BIOS Feature	- 32Mb AMI UEFI Legal BIOS with GUI support - Supports "Plug and Play" - ACPI 1.1 Compliance Wake Up Events - Supports jumperfree - SMBIOS 2.3.1 Support - DRAM, FCH, +1V, +1.8V Voltage Multi-adjustment
Support CD	- Drivers, Utilities, AntiVirus Software (Trial Version), ASRock Software Suite (CyberLink DVD Suite - OEM and Trial; Creative Sound Blaster X-Fi MB - Trial)
Unique Feature	- Instant Boot - ASRock Instant Flash - ASRock AIWI - ASRock APP Charger - SmartView - Hybrid Booster: - ASRock U-COP - Boot Failure Guard (B.F.G.)
Hardware Monitor	- CPU Temperature Sensing - Chassis Temperature Sensing - CPU/Chassis Fan Tachometer - CPU/Chassis Quiet Fan (Allow Chassis Fan Speed Auto-Adjust by CPU or MB Temperature) - CPU/Chassis Fan Multi-Speed Control - Voltage Monitoring: +12V, +5V, +3.3V, CPU Vcore
OS	- Microsoft® Windows® 7 / 7 64-bit / Vista™ / Vista™ 64-bit / XP / XP Media Center / XP 64-bit compliant
Certifications	- FCC, CE, WHQL - ErP/EuP Ready (ErP/EuP ready power supply is required)
Accessories	- Quick Installation Guide, Support CD, I/O Shield - 2 x SATA Data Cables (Optional)

Product Brief <<<

Standard Mini-ITX motherboard for Mini-ITX and Micro-ATX case

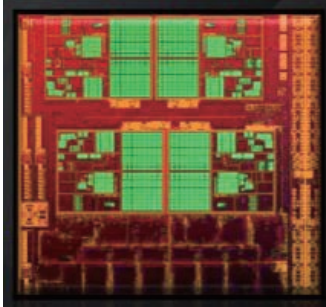
- AMD Dual-Core Zacate E350 APU
- AMD A50M Hudson M1 Chipset Supports 4 x Native SATA3 6Gb/s.
- ASRock DuraCap (2.5 x longer life time), 100% Japan-made high-quality Conductive Polymer Capacitors
- Supports DDR3 1066, 2 DIMM slots, Max. capacity up to 16GB
- Integrated AMD Radeon HD 6310 graphics, DX11 class iGPU, Pixel Shader 5.0
- Multi VGA Output options: D-Sub, DVI-D and HDMI
- 2 x USB 3.0 Connectors, 4 x SATA3 Connectors, 1 x eSATA3 Connector
- 7.1 CH HD Audio with Content Protection (Realtek ALC892 Audio Codec)
- Supports ASRock XFast USB, UEFI, Instant Boot, Instant Flash, Multi-Speed Fan Control, APP Charger, SmartView
- Free Software : CyberLink DVD Suite - OEM and Trial; Creative Sound Blaster X-Fi MB - Trial

The specification is subject to change without notice. The brand and product names are trademarks of their respective companies. Any configuration other than original product specification is not guaranteed.

E350M1/USB3

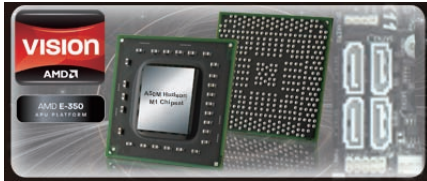
AMD Dual-Core E350 APU + A50M Chipset

ASRock
www.asrock.com



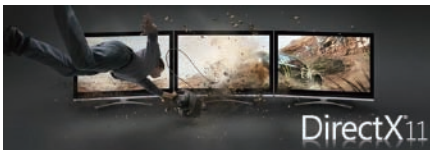
Dual-Core Zacate E350 APU

Accelerated Processing Unit (APU) is the unique combination of CPU and GPU computing technologies. It is designed to vastly improve today's Internet, video processing, playback, and gaming experiences.



AMD A50M Hudson M1 Chipset Supports 4 x Native SATA3 Ports

The AMD A50M Hudson M1 chipset can support 4 x native SATA3 ports which provides faster data transfer rate than the third party SATA3 IC.

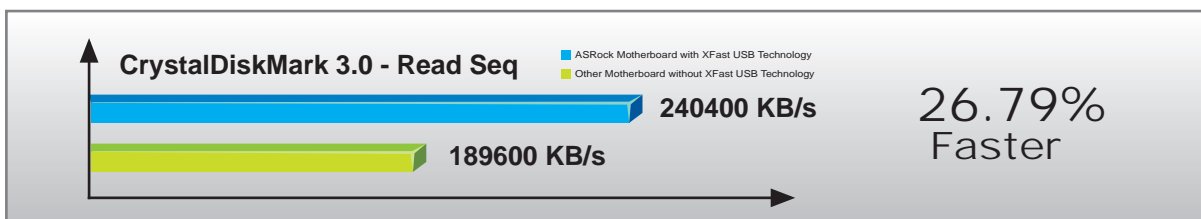
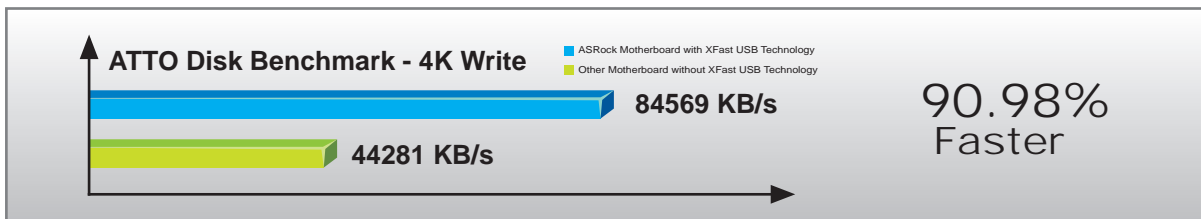


DirectX® 11

DirectX® 11 is the very latest in high-speed, high-fidelity gaming and computing. It can enable not just more visually stunning games, but significant performance improvements in some of your favorite websites and everyday applications.

ASRock XFast USB Technology - Faster Than Your Imagination!

ASRock XFast USB Technology redefines the new standard in high performance computing. Proving once again to be the pioneer in motherboard industry, ASRock XFast USB Series Motherboards integrate with the latest XFast USB Technology which delivers the world's fastest USB data transfer speed. According to below graph, it shows that the ASRock XFast USB Technology can even boost USB 3.0 performance up to 90.98% faster!



E350M1/USB3

AMD Dual-Core E350 APU + A50M Chipset

ASRock
www.asrock.com



DuraCap

100% Japan-made high-quality
Conductive Polymer Capacitors



4 x SATA3 6Gb/s Ports

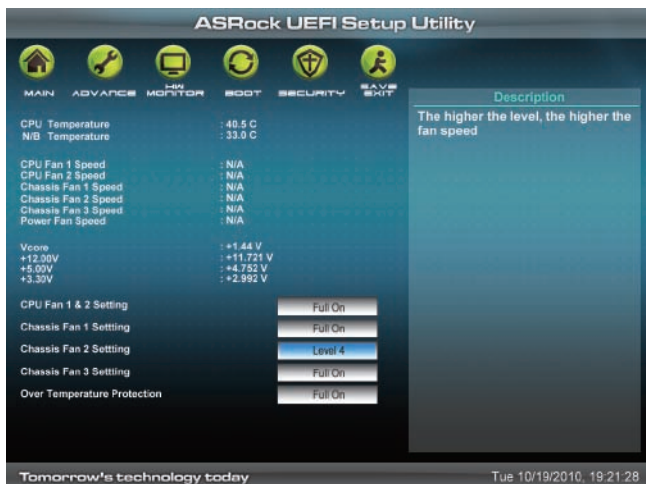
The AMD A50M (Hudson M1) chipset provides additional flexibility and upgradability with up to 4 ports of native SATA3 6G/bs storage interface.



2 x USB 3.0 5Gb/s Ports

The ASRock E350M1/USB3 motherboard comes with two USB 3.0 ports on the rear panel that delivers the fastest transmission performance for the multi tasks.

UEFI – The Revolutionary BIOS Interface



Unified Extensible Firmware Interface (UEFI) is a revolutionary BIOS utility which offers tweak-friendly options in an advanced viewing interface. Compared with traditional BIOS design, the latest UEFI utility provides lots improved functions. The major features of UEFI include:

1. Graphical Visual Experience – UEFI provides an improved visual interface with colorful icons and makes your computing environment more versatile to replace the traditional dull BIOS page.
2. Mouse Enabling – Besides keyboard control, you can freely use mouse to select your ideal settings in UEFI as well.
3. Supports 3TB bootable HDD - UEFI breaks the limitations of 2TB bootable HDD on traditional BIOS. With UEFI, you can enjoy 3TB bootable HDD size.

*Windows Vista-64bit or Windows 7-64bit OS is required

E350M1/USB3

AMD Dual-Core E350 APU + A50M Chipset

ASRock
www.asrock.com

SmartView

Experience the Brand New Browser Now

SmartView is the smart start page for IE that combines your most visited web sites, your history, your Facebook friends and your real-time newsfeed into an enhanced view for a more personal Internet experience. ASRock motherboards are exclusively equipped with the SmartView utility that helps you keep in touch with friends on-the-go.

The Major Features of SmartView

Visual thumbnail images which categorize and rank your frequently visited websites, as well as provide a chronological view of your browser history.



A persistent, real-time Facebook newsfeed located within the Internet Explorer sidebar.



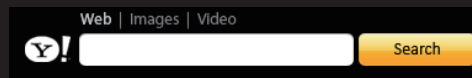
A "Friend Wall" that conveniently alphabetizes your Facebook friends by profile photo, allowing immediate access to your friends' profile pages.



A "share this" button which allows you to instantly and immediately share webpage posts and links to your friends' Facebook pages.



A persistent search box from best-in-class search engines such as Google, Yahoo, Baidu (China only) and Yandex (Russia only).



Two mode options that allow you to choose your favored view style.



Flow Mode



Flow Mode

System Requirements

OS version: Win7 32/64 bit, Vista 32/64

bit Browser version: IE8

E350M1/USB3

AMD Dual-Core E350 APU + A50M Chipset

ASRock
www.asrock.com



CyberLink



CyberLink Power2Go 6.1 LE OEM

Power2Go 6 lets you burn and backup videos, photos, music and data onto Blu-ray Discs and DVDs.

CyberLink MediaShow 4.1 SE OEM

Photo and video management software MediaShow edits videos and photos instantly, creates slideshow, and allows publishing directly to YouTube and Flickr.

CyberLink PowerDVD 8.0 DTS Trial

World-renowned PowerDVD 8 DTS delivers outstanding DVD movie playback quality on your PC.

CyberLink PowerDirector 8.0 Trial

PowerDirector - Video Editing software – edits high-definition videos including AVCHD, allows output to PSP iPod and Blu-ray Disc.

CyberLink PowerBackup 2.5 Trial

PowerBackup backs up valuable data on your PC.

Creative Sound Blaster X-Fi MB Trial

The Sound Blaster X-Fi MB solution provides premium audio quality, effects and features for PC systems equipped with onboard audio.

For gamers, the EAX® ADVANCED HD 4.0, with its state-of-the-art Multi-Environment rendering and reverb modelling, delivers a much more realistic and immersive 3D gaming experience than your motherboard audio ever will.