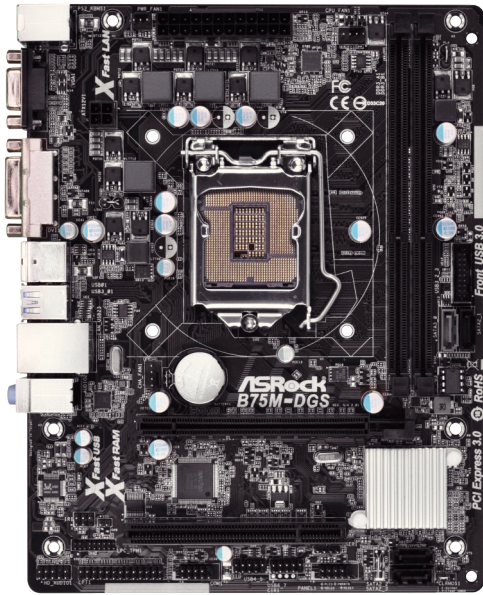


B75M-DGS R2.0

Intel® B75 Chipset

ASRock
www.asrock.com



All Solid Caps



Fast Boot



Restart to UEFI



Dehumidifier



ASRock OMG



Internet Flash



Google Chrome Browser & Toolbar

Product Brief

- All Solid Capacitor design
- Supports Dual Channel DDR3 2200(OC)
- 1 x PCIe 3.0 x16, 1 x PCI
- PCIe Gigabit LAN
- Supports Intel® HD Graphics with Built-in Visuals
- Dual VGA Output: DVI-D and D-Sub
- 5.1 CH HD Audio (Realtek ALC662 Audio Codec)
- Supports ASRock XFast 555, Fast Boot, Restart to UEFI, Dehumidifier, OMG, Internet Flash
- Supports Intel Small Business Advantage, Intel Smart Connect Technology, Intel Rapid Start Technology
- Free Bundle : CyberLink MediaEspresso 6.5 Trial, Google Chrome Browser and Toolbar

Detail Specification

Platform	- Micro ATX - All Solid Capacitor design
CPU	- Supports 3rd and 2nd Generation Intel® Core™ i7 / i5 / i3 in LGA1155 Package - Supports Intel® Turbo Boost 2.0 Technology - Supports Hyper-Threading Technology
Chipset	- Intel® B75 - Supports Intel® Small Business Advantage - Supports Intel® Rapid Start Technology and Smart Connect Technology
Memory	- Dual Channel DDR3 memory technology - 2 x DDR3 DIMM slots - Supports DDR3 2200(OC)/1600/1333/1066 non-ECC, un-buffered memory (DDR3 1600 with Intel® Ivy Bridge CPU, DDR3 1333 with Intel® Sandy Bridge CPU) * DDR3 2200(OC) is only supported with Intel® Core™ i7 3770K - Max. capacity of system memory: 16GB - Supports Intel® Extreme Memory Profile (XMP) 1.3 / 1.2
Expansion Slot	- 1 x PCI Express 3.0 x16 slot (PCI-E1: x16 mode) * PCI-E 3.0 is only supported with Intel® Ivy Bridge CPU. With Intel® Sandy Bridge CPU, it only supports PCI-E 2.0. - 1 x PCI slot
Graphics	* Intel® HD Graphics Built-in Visuals and the VGA outputs can be supported only with processors which are GPU integrated. - Supports Intel® HD Graphics Built-in Visuals : Intel® Quick Sync Video 2.0, Intel® InTru™ 3D, Intel® Clear Video HD Technology, Intel® Insider™, Intel® HD Graphics 2500/4000 with Intel® Ivy Bridge CPU - Supports Intel® HD Graphics Built-in Visuals : Intel® Quick Sync Video, Intel® InTru™ 3D, Intel® Clear Video HD Technology, Intel® HD Graphics 2000/3000, Intel® Advanced Vector Extensions (AVX) with Intel® Sandy Bridge CPU - Pixel Shader 5.0, DirectX 11 with Intel® Ivy Bridge CPU. Pixel Shader 4.1, DirectX 10.1 with Intel® Sandy Bridge CPU. - Max. shared memory 1760MB with Intel® Ivy Bridge CPU. Max. shared memory 1759MB with Intel® Sandy Bridge CPU. - Dual VGA Output: support DVI-D and D-Sub ports by independent display controllers - Supports DVI-D with max. resolution up to 1920x1200 @ 60Hz - Supports D-Sub with max. resolution up to 2048x1536 @ 75Hz - Supports HDCP function with DVI-D port - Supports Full HD 1080p Blu-ray (BD) / HD-DVD playback with DVI-D port
Audio	- 5.1 CH HD Audio (Realtek ALC662 Audio Codec)
LAN	- PCIe x1 Gigabit LAN 10/100/1000 Mb/s - Realtek RTL8111E - Supports Wake-On-LAN - Supports LAN Cable Detection - Supports Energy Efficient Ethernet 802.3az - Supports PXE
Rear Panel I/O	I/O Panel - 1 x PS/2 Mouse Port - 1 x PS/2 Keyboard Port - 1 x D-Sub Port - 1 x DVI-D Port - 4 x Ready-to-Use USB 2.0 Ports - 2 x Ready-to-Use USB 3.0 Ports - 1 x RJ-45 LAN Ports with LED (ACT/LINK LED and SPEED LED) - HD Audio Jack: Line in / Front Speaker / Microphone
SATA3	- 1 x SATA3 6.0 Gb/s connector, supports NCQ, AHCI and Hot Plug functions
USB 3.0	- 2 x Rear USB 3.0 ports, support USB 1.1/2.0/3.0 up to 5Gb/s - 1 x Front USB 3.0 header (supports 2 USB 3.0 ports), supports USB 1.1/2.0/3.0 up to 5Gb/s
Connector	- 3 x SATA2 3.0 Gb/s connectors, support NCQ, AHCI and Hot Plug functions - 1 x SATA3 6.0 Gb/s connector - 1 x IR header - 1 x Print port header - 1 x COM port header - 1 x Chassis Intrusion header - 1 x TPM Header - 1 x CPU Fan connector (4-pin) - 1 x Chassis Fan connector (4-pin) - 1 x Power Fan connector (3-pin) - 24 pin ATX power connector - 4 pin 12V power connector - Front panel audio connector - 2 x USB 2.0 headers (support 4 USB 2.0 ports) - 1 x USB 3.0 header (supports 2 USB 3.0 ports)
BIOS Feature	- 64Mb AMI UEFI Legal BIOS with GUI support - Supports "Plug and Play" - ACPI 1.1 Compliance Wake Up Events - Supports jumperfree - SMBIOS 2.3.1 Support - CPU Core, IGPU, DRAM, 1.8V PLL, VTT, VCCSA Voltage Multi-adjustment
Support CD	- Drivers, Utilities, AntiVirus Software (Trial Version), CyberLink MediaEspresso 6.5 Trial, Google Chrome Browser and Toolbar
Unique Feature	- ASRock Extreme Tuning Utility (AXTU) - ASRock Instant Boot - ASRock Instant Flash - ASRock APP Charger - ASRock XFast USB - ASRock XFast LAN - ASRock XFast RAM - ASRock Crashless BIOS - ASRock OMG (Online Management Guard) - ASRock Internet Flash - ASRock UEFI System Browser - ASRock Dehumidifier Function - ASRock Fast Boot - ASRock Restart to UEFI - Hybrid Booster: - ASRock Li-COP - Boot Failure Guard (B.F.G.) - Good Night LED
Hardware Monitor	- CPU Temperature Sensing - Chassis Temperature Sensing - CPU/Chassis/Power Fan Tachometer - CPU/Chassis Quiet Fan (Allow Chassis Fan Speed Auto-Adjust by CPU Temperature) - CPU/Chassis Fan Multi-Speed Control - CASE OPEN detection - Voltage Monitoring: +12V, +5V, +3.3V, CPU Vcore
OS	- Microsoft® Windows® 8 / 8 64-bit / 7 / 7 64-bit / Vista™ / Vista™ 64-bit / XP / XP 64-bit compliant
Certifications	- FCC, CE, WHQL - ErP/EuP Ready (ErP/EuP ready power supply is required)
Accessories	- Quick Installation Guide, Support CD, I/O Shield - 2 x SATA Data Cables

B75M-DGS R2.0

Intel® B75 Chipset

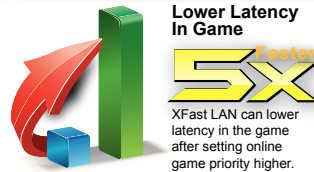
ASRock®
www.asrock.com



5X Faster for Photoshop Execution

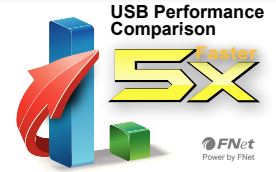
XFast RAM will create a virtual disk from the system memory to boost the performance. For Photoshop, it can even perform 5X faster than before.

* The performance boost percentage may vary with a different configuration.



Time latency in World of Warcraft: Cataclysm
*Lower is better

ASRock Motherboard with XFast LAN
Other Motherboard without XFast LAN



ATTO Disk Benchmark 4K Read

ASRock Motherboard with XFast USB
Other Motherboard without XFast USB

Windows 8 Support

Fast Boot

With ASRock's exclusive Fast Boot technology, it takes less than 1.5 seconds* to logon to Windows 8 from a cold boot. No more waiting! The speedy boot will completely change your user experience and behavior.

*The boot time may vary with a different configuration.



Restart to UEFI

ASRock "Restart to UEFI" technology is designed for those requiring frequent UEFI access. It allows users to easily enter the UEFI SETUP automatically when turning on the PC next time.



Intel® Small Business Advantage

Supports Intel® Small Business Advantage



Intel® SBA with Next Generation Intel® Core is a unique, out-of-the-box solution that delivers:

- An easy-to-use interface
- Relevant security and productivity applications
- Free and easy customization

SECURITY

Software Monitor

Software Monitor helps keep critical security software running by monitoring it at the hardware level and alerting the business if there has been an attack.



Data Backup & Restore

Data Backup & Restore provides reliable after-hours backup of critical data using the local maintenance timer to remotely power on the PC.



USB Blocker

USB Blocker lets businesses control access to their infrastructure, preventing unauthorized USB devices or file imports or exports on company PCs.

PRODUCTIVITY

PC Health Center

PC Health Center can schedule and perform PC maintenance tasks after hours so as not to interrupt employees' work. It works even if the computer is powered down, as long as it is plugged in.



Energy Saver

With Energy Saver, businesses can save energy by scheduling PCs to power-down at the end of the day and turn on before the work day begins—ready for employees as they arrive in the morning.



B75M-DGS R2.0

Intel® B75 Chipset

ASRock
www.asrock.com

All Solid Capacitor Design

All the capacitors on this board are built with 100% all solid capacitors. With these solid caps, ASRock motherboard is allowed to perform more stably and ensure longer lifetime.



Next-Gen PCIe 3.0

- Higher bit rate - 8.0GT/s
- Higher bandwidth per lane - 1GB/s
- Higher efficiency - 98.5% encoding efficiency
- 100% backward compatible with previous PCI-E 2.0 / 1.0 standard

Note: Supported with 3rd Gen Intel Core Processor



Intel HD Graphics

Intel® HD Graphics, simplifies your designs by eliminating additional discrete graphics hardware, while integrating stunning visuals and performance for immersive gaming.



Intel Smart Connect Technology

Intel Smart Connect Technology keeps content continuously updated while the PC is asleep! It will periodically wake up the PC while in a sleep state and check updates for things like email, Twitter, Facebook, etc.



Intel Rapid Start Technology

Quickly return to where you left off with a PC that goes from deep-sleep to full awake in a flash.



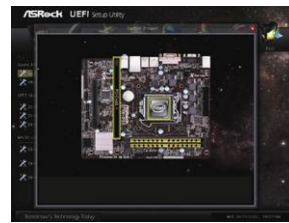
ASRock Dehumidifier

Users may prevent motherboard damages due to dampness by enabling "Dehumidifier Function". When enabling Dehumidifier Function, the computer will power on automatically to dehumidify the system after entering S4/S5 state.



UEFI System Browser

UEFI system browser is a useful tool included in graphical UEFI. It can detect the devices and configurations that users are currently using in their PC.



ASRock OMG (Online Management Guard)

Fast, Easy and Free – ASRock OMG technology allows you to establish an internet curfew or restrict internet access at specified times. Administrators are able to schedule the starting and ending hours of internet access granted to other users.



Internet Flash

Internet Flash searches for available UEFI firmware updates from ASRock servers. System can auto-detect the latest UEFI from our servers and flash them within UEFI setup without entering Windows® OS.



Google Chrome Browser & Toolbar

Chrome is a fast, simple, and secure web browser, built for the modern web. Google Toolbar is designed to help you find what you're looking for quickly and discover new things along the way.



Cyberlink MediaEspresso 6.5 Trial

CyberLink MediaEspresso 6.5 trial supports hardware transcoding and is optimized to accelerate conversion of all your favorite media files for your favorite portable players.

