

880G Pro3

AMD 880G + SB850 Chipsets

ASRock
www.asrock.com



Detail Specification <<<<

Platform	- ATX Form Factor: 12.0-in x 9.6-in, 30.5 cm x 24.4 cm - All Solid Capacitor design
CPU	- Support for Socket AM3+ processors - Support for Socket AM3 processors: AMD Phenom™ II X6 / X4 / X3 / X2 (except 920 / 940) / Athlon II X4 / X3 / X2 / Sempron processors - Supports 8-Core CPU - Supports UCC feature (Unlock CPU Core) - 4 + 1 Power Phase Design - Supports CPU up to 140W - Supports AMD's Cool 'n' Quiet Technology - FSB 2600 MHz (5.2 GT/s) - Supports Untied Overclocking Technology - Supports Hyper-Transport 3.0 (HT 3.0) Technology
Chipset	- Northbridge: AMD 880G - Southbridge: AMD SB850
Memory	- Dual Channel DDR3 memory technology - 4 x DDR3 DIMM slots - Supports DDR3 1866(OC)/1800(OC)/1600(OC)/1333/1066/800 non-ECC, un-buffered memory - Max. capacity of system memory: 32GB
Expansion Slot	- 2 x PCI Express 2.0 x16 slots (PCIe2 @ x16 mode; PCIe3 @ x4 mode) - 1 x PCI Express 2.0 x1 slot - 3 x PCI slots - Supports ATI™ Quad CrossFireX™, CrossFireX™ and Hybrid CrossFireX™
Graphics	- Integrated AMD Radeon HD 4250 graphics - DX10.1 class iGPU, Shader Model 4.1 - Max. shared memory 512MB - Three VGA Output options: D-Sub, DVI-D and HDMI - Supports HDMI Technology with max. resolution up to 1920x1200 (1080P) - Supports Dual-link DVI with max. resolution up to 2560x1600 @ 75Hz - Supports D-Sub with max. resolution up to 2048x1536 @ 85Hz - Supports HDCP function with DVI and HDMI ports - Supports Full HD 1080p Blu-ray (BD) / HD-DVD playback with DVI and HDMI ports
Audio	- 7.1 CH HD Audio with Content Protection (Realtek ALC892 Audio Codec) - Premium Blu-ray audio support
LAN	- PCI-E x1 Gigabit LAN 10/100/1000 Mb/s - Atheros® AR8151 - Supports Wake-On-LAN
Rear Panel I/O	I/O Panel - 1 x PS/2 Keyboard Port - 1 x VGA/D-Sub Port - 1 x VGA/DVI-D Port - 1 x HDMI Port - 1 x Optical SPDIF Out Port - 4 x Ready-to-Use USB 2.0 Ports - 1 x eSATA3 Connector - 2 x Ready-to-Use USB 3.0 Ports - 1 x RJ-45 LAN Port with LED (ACT/LINK LED and SPEED LED) - 1 x IEEE 1394 Port - 1 x Clear CMOS Switch with LED - HD Audio Jack: Rear Speaker / Central / Bass / Line in / Front Speaker / Microphone
SATA3	- 5 x SATA3 6.0 Gb/s connectors, support RAID (RAID 0, RAID 1, RAID 0+1 and RAID 5), NCQ, AHCI and "Hot Plug" functions
USB 3.0	- 2 x USB 3.0 ports by Etron EJ168A, support USB 1.0/2.0/3.0 up to 5Gb/s
Connector	- 5 x SATA3 6.0 Gb/s connectors - 1 x IR header - 1 x COM port header - 1 x IEEE 1394 header - 1 x HDMI SPDIF header - 1 x Power LED header - CPU/Chassis/Power FAN connector - 24 pin ATX power connector - 8 pin 12V power connector - Front panel audio connector - 3 x USB 2.0 headers (support 6 USB 2.0 ports) - 1 x Dr. Debug (7-Segment Debug LED)
Smart Switch	- 1 x Power Switch with LED - 1 x Reset Switch with LED - 1 x Clear CMOS Switch with LED
BIOS Feature	- 32Mb AMI UEFI Legal BIOS with GUI support - Supports "Plug and Play" - ACPI 1.1 Compliance Wake Up Events - Supports jumperfree - SMBIOS 2.3.1 Support - CPU, VCCM, NB, SB Voltage Multi-adjustment
Support CD	- Drivers, Utilities, AntiVirus Software (Trial Version), AMD OverDrive™ ASRock Software Suite (CyberLink DVD Suite - OEM and Trial; Creative Sound Blaster X-Fi MB - Trial)
Unique Feature	- ASRock Extreme Tuning Utility (AXTU) - Instant Boot - ASRock Instant Flash - ASRock AIWI - ASRock APP Charger - SmartView - ASRock XFast USB - Hybrid Booster - CPU Frequency Stepples Control - ASRock U-COP - Boot Failure Guard (B.F.G.) - Turbo 40 / Turbo 50 GPU Overclocking - Turbo UCC
Hardware Monitor	- CPU Temperature Sensing - Chassis Temperature Sensing - CPU/Chassis/Power Fan Tachometer - CPU Quiet Fan - CPU/Chassis Fan Multi-Speed Control - Voltage Monitoring: +12V, +5V, +3.3V, Vcore
OS	- Microsoft® Windows® 7 / 7 64-bit / Vista™ / Vista™ 64-bit / XP / XP 64-bit compliant compliant
Certifications	- FCC, CE, WHOL - ErP/EuP Ready (ErP/EuP ready power supply is required)
Accessories	- Quick Installation Guide, Support CD, I/O Shield - 2 x SATA data cables (optional)

Product Brief <<<<

- 100% All Solid Capacitor design
- Supports AM3+Processor,8-Core CPU
- Supports Dual Channel DDR3 1866(OC)
- Supports ATI™ Quad CrossFireX™, CrossFireX™ and Hybrid CrossFireX™
- Integrated AMD Radeon HD 4250 graphics, DX10.1 class iGPU, Shader Model 4.1
- Multi-VGA Output : D-Sub, DVI-D and HDMI
- 2 x USB 3.0, 5 x SATA3, 2 x IEEE 1394
- Dr. Debug, Power/Reset/Clear CMOS Switch with LED
- Supports XFast USB, AXTU, UEFI, Instant Boot, Instant Flash, APP Charger, SmartView, Turbo UCC
- 7.1 CH HD Audio with Content Protection (Realtek ALC892 Audio Codec), Supports Premium Blu-ray audio

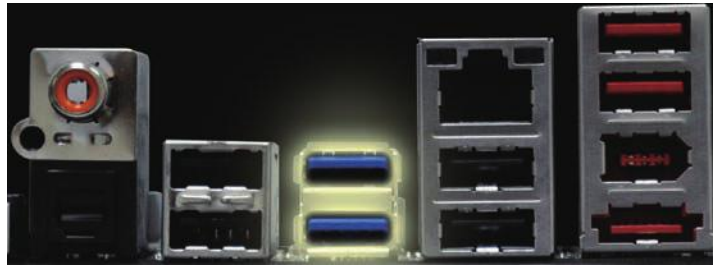
The specification is subject to change without notice. The brand and product names are trademarks of their respective companies. Any configuration other than original product specification is not guaranteed.

880G Pro3

AMD 880G + SB850 Chipsets

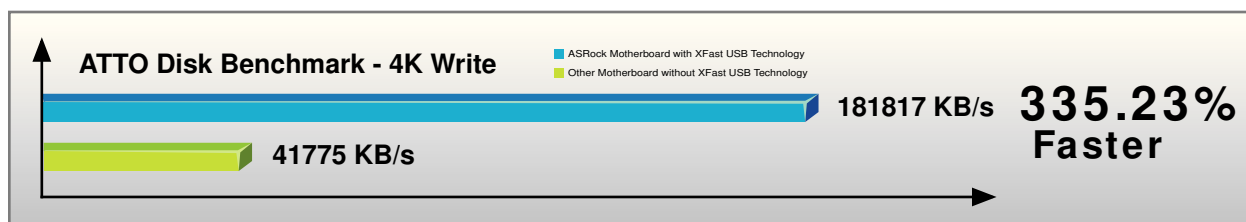
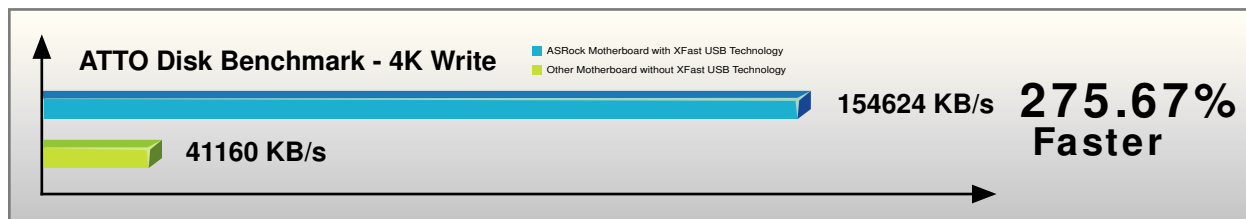
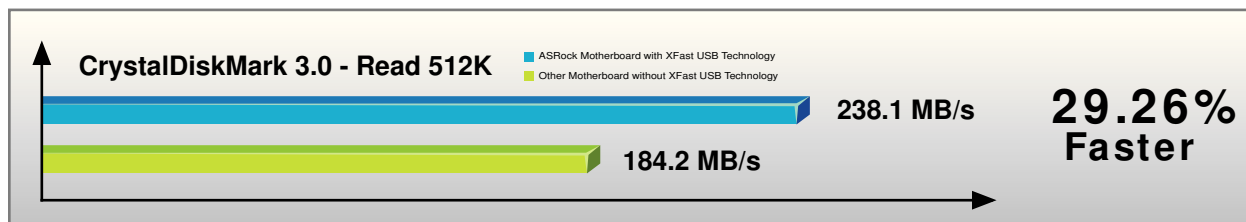
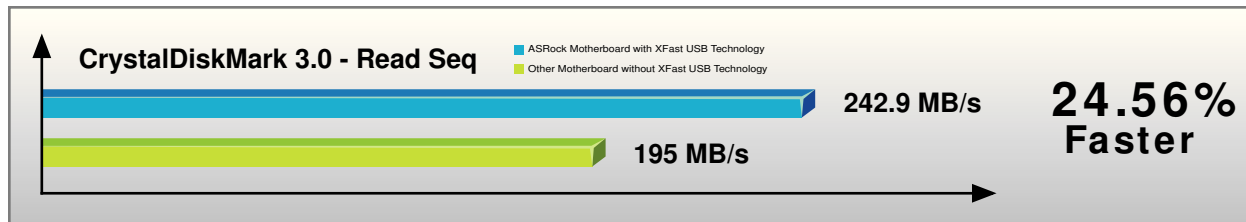
ASRock
www.asrock.com

ASRock XFast USB Technology - Faster Than Your Imagination!



(The rear I/O photo is example only)

ASRock XFast USB Technology redefines the new standard in high performance computing. Proving once again to be the pioneer in motherboard industry, ASRock XFast USB Series Motherboards integrate with the latest XFast USB Technology which delivers the world's fastest USB data transfer speed. According to the below graph, it shows that the ASRock XFast USB technology can even boost USB 3.0 performance up to 335.23%!



880G Pro3

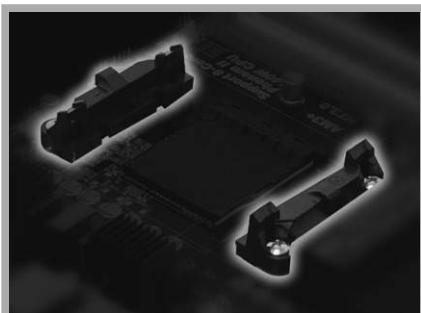
AMD 880G + SB850 Chipsets

ASRock
www.asrock.com



AM3+ 8-Core Processor Support

Compatible with AM3+ 8-Core CPU! This board is designed to build up the most powerful system performance and deliver the most demanding technology for users nowadays. Just enjoy next generation computing with ASRock 8-Core CPU Ready motherboard.



Two-Piece Retention Module

By adopting the exclusive AMD two-piece retention module that improves the cooling efficiency with AM3+/AM3/AM2+ CPU coolers, this board allows heat dissipation becomes faster and effective.

ASRock Turbo UCC

Your All-in-one Solution

- ✓ Overclocking
- ✓ Unlock CPU Core
- ✓ Power Saving

Motherboard	880G Pro3
Chipset	AMD 880G + SB850
CPU	Phenom II X2 555
RAM	Kingston 1333 1Gx2
VGA	ATI 4890
HDD	WD 500G

CINEBENCH R10 CPU Benchmark(x CPU)	
Turbo UCC OFF	5634
97% Increase	
Turbo UCC ON	11125

Sandra 09-Multi-Media Int	
Turbo UCC OFF	61.78
171% Increase	
Turbo UCC ON	134.1

880G Pro3

AMD 880G + SB850 Chipsets

ASRock
www.asrock.com

AXTU – The All-in-1 Tuning Software



ASRock Extreme Tuning Utility (AXTU) is an all-in-one software to fine-tune different features in a user-friendly interface, which includes Hardware Monitor, Fan Control, Overclocking, OC DNA and IES. In Hardware Monitor, it shows the major readings of your system. In Fan Control, it shows the fan speed and temperature for you to adjust. In Overclocking, you are allowed to adjust the CPU frequency, ratio and some voltages for optimal system performance. In OC DNA, you can save your OC settings as a profile and share with your friends. Your friends then can load the OC profile to their own system to get the same OC settings. In IES (Intelligent Energy Saver), the voltage regulator can reduce the number of output phases to improve efficiency when the CPU cores are idle without sacrificing computing performance.

UEFI – The Revolutionary BIOS Interface



*Windows Vista-64bit or Windows 7-64bit OS is required

Unified Extensible Firmware Interface (UEFI) is a revolutionary BIOS utility which offers tweak-friendly options in an advanced viewing interface. Compared with traditional BIOS design, the latest UEFI utility provides lots improved functions. The major features of UEFI include:

1. Graphical Visual Experience – UEFI provides an improved visual interface with colorful icons and makes your computing environment more versatile to replace the traditional dull BIOS page.
2. Mouse Enabling – Besides keyboard control, you can freely use mouse to select your ideal settings in UEFI as well.
3. Supports 3TB bootable HDD - UEFI breaks the limitation of 2TB bootable HDD on traditional BIOS. With UEFI, you can enjoy 3TB bootable HDD size.

880G Pro3

AMD 880G + SB850 Chipsets

ASRock
www.asrock.com

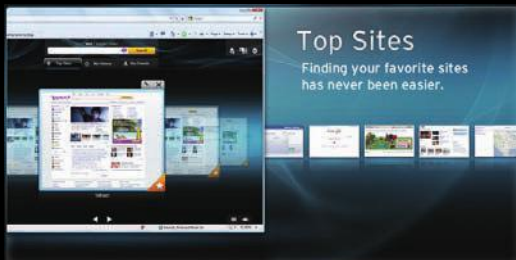
SmartView

Experience the Brand New Browser Now

SmartView is the smart start page for IE that combines your most visited web sites, your history, your Facebook friends and your real-time newsfeed into an enhanced view for a more personal Internet experience. ASRock motherboards are exclusively equipped with the SmartView utility that helps you keep in touch with friends on-the-go.

The Major Features of SmartView

Visual thumbnail images which categorize and rank your frequently visited websites, as well as provide a chronological view of your browser history.



A persistent, real-time Facebook newsfeed located within the Internet Explorer sidebar.



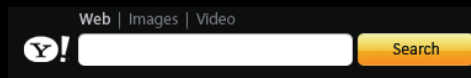
A "Friend Wall" that conveniently alphabetizes your Facebook friends by profile photo, allowing immediate access to your friends' profile pages.



A "share this" button which allows you to instantly and immediately share webpage posts and links to your friends' Facebook pages.



A persistent search box from best-in-class search engines such as Google, Yahoo, Baidu (China only) and Yandex (Russia only).



Two mode options that allow you to choose your favored view style.



Flow Mode



Flow Mode

System Requirements

OS version: Win7 32/64 bit, Vista 32/64

bit Browser version: IE8

880G Pro3

AMD 880G + SB850 Chipsets

ASRock
www.asrock.com



- ★ CyberLink Power2Go 6.1 LE OEM
- ★ CyberLink MediaShow 4.1 SE OEM
- ★ CyberLink PowerDVD 8.0 DTS Trial
- ★ CyberLink PowerDirector 8.0 Trial
- ★ CyberLink PowerBackup 2.5 Trial
- ★ Creative Sound Blaster X-Fi MB Trial

CyberLink



CyberLink Power2Go 6.1 LE OEM

Power2Go 6 lets you burn and backup videos, photos, music and data onto Blu-ray Discs and DVDs.

CyberLink MediaShow 4.1 SE OEM

Photo and video management software MediaShow edits videos and photos instantly, creates slideshow, and allows publishing directly to YouTube and Flickr.

CyberLink PowerDVD 8.0 DTS Trial

World-renowned PowerDVD 8 DTS delivers outstanding DVD movie playback quality on your PC.

CyberLink PowerDirector 8.0 Trial

PowerDirector - Video Editing software – edits high-definition videos including AVCHD, allows output to PSP iPod and Blu-ray Disc.

CyberLink PowerBackup 2.5 Trial

PowerBackup backs up valuable data on your PC.

Creative Sound Blaster X-Fi MB Trial

The Sound Blaster X-Fi MB solution provides premium audio quality, effects and features for PC systems equipped with onboard audio.

For gamers, the EAX[®] ADVANCED HD 4.0, with its state-of-the-art Multi-Environment rendering and reverb modelling, delivers a much more realistic and immersive 3D gaming experience than your motherboard audio ever will.