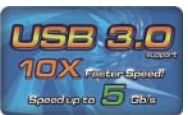


H55 Extreme3

Intel® H55

ASRock
www.asrock.com



- DuraCap (2.5), 100%
- V8 + 2
- DDR3 2600+()
- VGA D-Sub DVI-D HDMI
- 1 x eSATAIII, 2 x SATA3 6.0Gb/s
- 1 x USB 3.0, 2 x IEEE 1394
- ErP/EuP Ready, C.C.O., Dr. Debug
- : 1 x LED / CMOS
- Turbo 50/Turbo 100 GPU
- Instant Boot, Instant Flash, OC DNA,
- 7.1 DAC
- 110 (VT2020)
- : CyberLink DVD - OEM ; Creative Sound Blaster X-Fi MB -



	- ATX : 12.0-in x 9.6-in, 30.5 cm x 24.4 cm (100%)
	- LGA1156 Intel® Core™ i7 / i5 / i3 Pentium® G 6950 V8 + 2 Intel® Turbo Boost Hyper-Threading EM64T CPU
	- Intel® H55
	- DDR3
	- 4 x DDR3 DDR3 2600+()/2133()/1866()/1600/1333/1066 non-ECC, un-buffered ; 16GB Intel® Extreme Memory Profile XMP
	- 1 x PCI Express 2.0 x 16 (: x 16)
	- 3 x PCI Express 2.0 x1 2.5GT/s
	- 3 x PCI
*	- Intel® HD Graphics
	- Intel® HD Graphics Pixel Shader 4.0, DirectX 10 1759MB
	- VGA D-Sub DVI-D HDMI 1920 x 1200
	- HDMI 1.3a 1920x1200 @ 60Hz
	- D-Sub 2048 x 1536 @ 75Hz
	- HDMI 1.3a Auto Lip Sync, Deep Color (12bpc), xvYCC ()
	- HBR ()
	- DVI HDMI HDCP BD /HD-DVD
	- DVI HDMI 1080p
	- 7.1 DAC 110 (VIA® VT2020 HDM)
	- Dolby True HD DTS HD Master Audio Intel® Core™ i5 600 / i3 500 / Pentium® G 6950 CPU)
	- PCI-E x1 10/100/1000 Mb/s
	- Realtek RTL8111DL Wake-On-LAN
I/O	I/O
	- 1 x PS/2
	- 1 x VGA/D-Sub
	- 1 x VGA/DVI-D
	- 1 x HDMI
	- 1 x SPDIF
	- 5 x USB 2.0
	- 1 x eSATAIII
	- 1 x USB 3.0
	- 1 x RJ-45
	- 1 x IEEE 1394
	- HD LED ACT.LINK LED SPEED LED
SATA3	- Marvell SE 9123/9120 2 SATA 6.0Gb/s NCO AHCI SATA3_2 eSATA3
USB 3.0	- Fresco FL1000G 1 USB 3.0 5Gb/s USB 3.0
	- 6 x SATAIII 3.0 Gb/s NCO AHCI
	- 2 x SATA3 6.0 Gb/s
	- 1 x COM
	- 1 x HDMI SPDIF
	- 1 x IEEE 1394
	- 1 x LED
	- CPU/ /
	- 24 ATX
	- 8 12V
	- 3 USB 2.0 (6 USB 2.0)
	- 1 x LED Dr. Debug
	- 1 x LED
	- 1 x LED CMOS
BIOS	- 64Mb AMI Legal BIOS
	- ACPI 1.1 Wake Up Events
	- SMBIOS 2.3.1
	- CPU VID VCCM SB VTT PCH PLL I. O. T.
	- CyberLink DVD - OEM () ; Creative Sound Blaster X-Fi MB -
	- Instant Boot
	- Instant Flash
	- OC DNA
	- Hybrid Booster():
	- CPU
	- ASRock U-COP CPU
	- Boot Failure Guard (B.F.G. C.C.O.)
	- Turbo 50/Turbo 100 GPU (Intel® HD Graphics)
	- CPU
	- CPU/ /
	- CPU
	- CPU/
	- : +12V, +5V, +3.3V,
	- Microsoft® Windows® 7 / 7 64-bit / Vista™ / Vista™ 64-bit / XP / XP 64-bit
	- FCC, CE, WHQL ErP/EuP
	- I/O
	- 4 x SATA
	- 2 x SATA 1 1

H55 Extreme3

Intel® H55

ASRock
www.asrock.com

USB3.0

10X Super Speed
USB 3.0 5 Gb/s
USB 2.0 1X 480 Mb/s

USB3.0

3.0

USB 3.0

USB 2.0

10

USB

SATA3



SATA 1 1.5 Gb/s
SATA 2 3 Gb/s
SATA 3 6 Gb/s

SATA3

SATA Revision 3.0

6Gb/s

SATA2

eSATA3



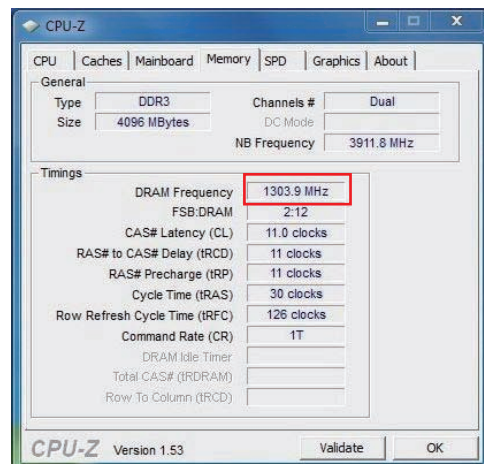
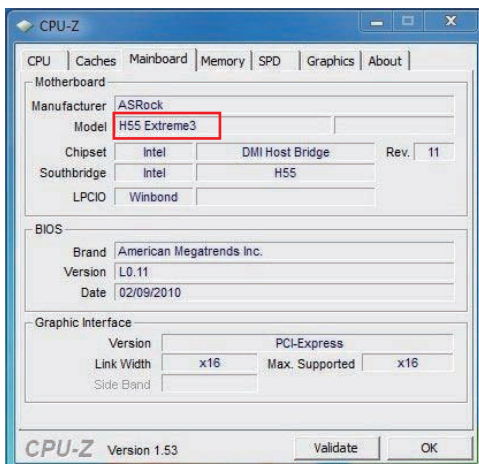
eSATA3

6Gb/s

I/O



**全球最快内存
支持 DDR3 2600+**



H55 Extreme3

Intel® H55

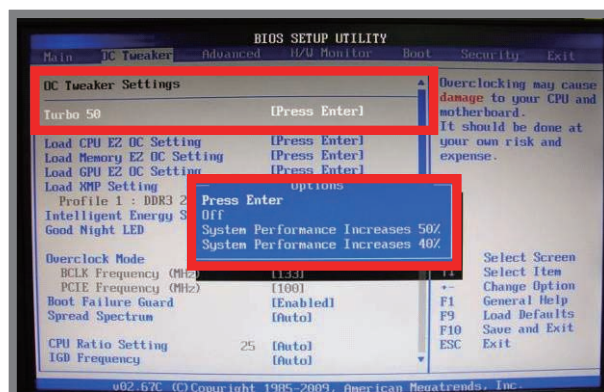
ASRock
www.asrock.com



50%

BIOS Turbo 50 CPU GPU
H55M Pro Turbo 50 50%

	H55M Pro
	Intel H55
BIOS	P1.20
CPU	Core i3 530 2.93 GHz
RAM	Kingston DDR3-1600 2GB*2
VGA	Intel HD Graphics
	Seagate Barracuda 7200.12 250GB



Turbo 50

H55M Pro/ Core i3 530	CPU Frequency	Memory Frequency	GPU Frequency	3DMARK 06	PCMARK Vantage	Super PI
Turbo 50	2.93GHz	1333MHz	733MHz	1767	4661	14.485
Turbo 50	4GHz	1456MHz	867MHz	2665	5453	10.641
	36.66%	9.23%	18.28%	50.82%	16.99%	26.54%



Pentium G6950
100%

Model	H55M Pro
	Intel H55
	L1.13
CPU	Pentium G6950 2.8GHz (Q3GT-C2)
RAM	Kingston DDR3-1600 2GB*2
VGA	onboard
	Seagate Barracuda 7200.12 250GB

Turbo 100

H55M Pro/ Pentium G6950	CPU Frequency	Memory Frequency	3DMARK Vantage (Entry)	3DMARK 06	PCMARK Vantage	Super PI
Turbo 100	2.8GHz	533MHz	3538	1308	3822	16.125
Turbo 100	4.2GHz	767MHz	6575	2634	4961	10.766
	50.00%	43.90%	85.84%	101.38%	29.8%	22.23%

H55 Extreme3

Intel® H55

ASRock
www.asrock.com



C.C.O.

Combo Cooler Option

Socket LGA 775* CPU
Socket LGA 1156** CPU

C.C.O.
O Socket 775
Socket LGA 1156 CPU



BIOS

/ CMOS



Dr. Debug

BIOS

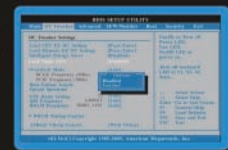


Multi SPEED Fan Control



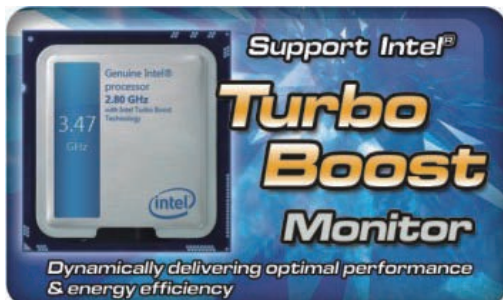
BIOS OC Tuner level 1
level 10

Good Night LED



/ LED

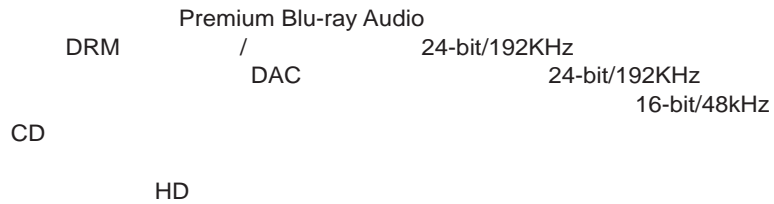
Intel® Turbo Boost Monitor



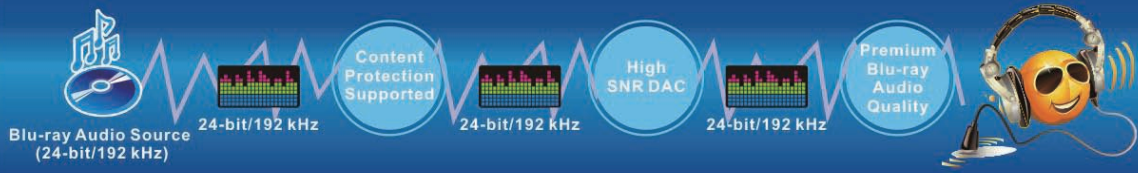
H55 Extreme3

Intel® H55

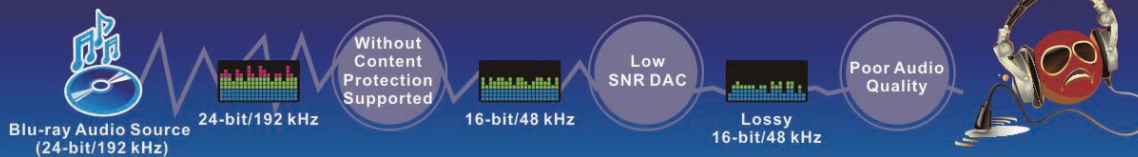
ASRock®
www.asrock.com



With ASRock Premium Blu-ray Audio



Others



* NR:

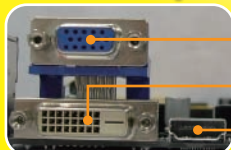
真蓝光



Full HD 1080p
 24-bit / 192KHz
 7.1 Blu-ray audio Premium

蓝光视频+蓝光音效

Multi-VGA Output Options



- D-Sub
- DVI-D
- HDMI

Onboard HDMI Audio

Dolby True HD
 DTS HD Master Audio

Intel HD Graphics

H55 Extreme3

Intel® H55

ASRock®
www.asrock.com



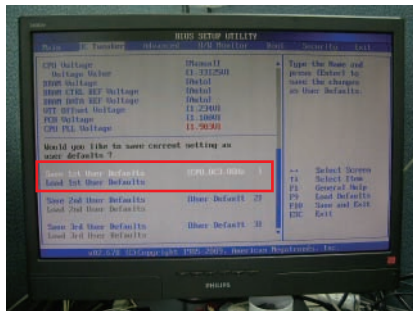
OC DNA

OC DNA

OC DNA 步骤

1

BIOS OC Tweaker Default BIOS User Default User "CPU_OC3.8GHz"



3

" Save " "CPU_OC3.8GHz"

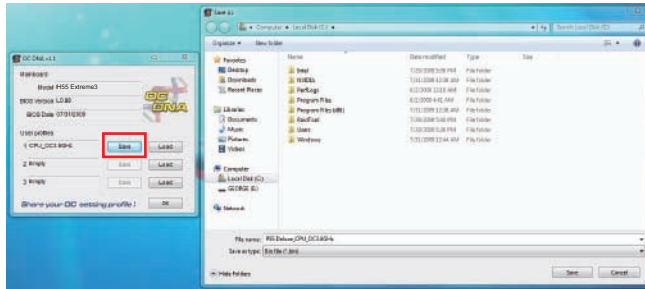
2

"CPU_OC3.8GHz" OC DNA User Profile 1



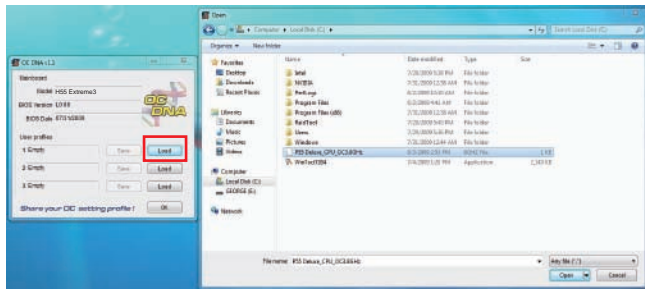
4

"CPU_OC3.8GHz"



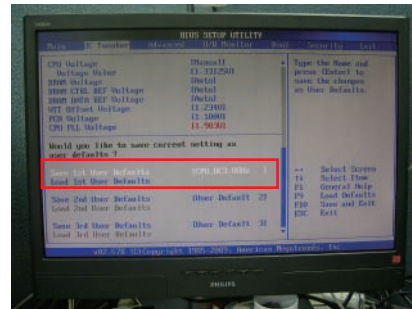
5

" CPU_OC3.8GHz " "CPU_OC3.8GHz" OC DNA



6

"CPU_OC3.8GHz" BIOS OC Tweaker BIOS



H55 Extreme3

Intel® H55

ASRock®
www.asrock.com



CyberLink



CyberLink Power2Go 6.1 LE OEM

Power2Go 6

DVD

CyberLink MediaShow 4.1 SE OEM

MediaShow

YouTube Flickr

CyberLink PowerDVD 8.0 DTS

PowerDVD 8 DTS

PC

DVD

CyberLink PowerDirector 8.0

PowerDirector –

–

AVCHD

PSP iPod

CyberLink PowerBackup 2.5

PowerBackup

Creative Sound Blaster X-Fi MB

Sound Blaster X-Fi MB

PC

EAX® ADVANCED HD 4.0

3D